

Product datasheet for RC210335

eIF1A (EIF1AX) (NM_001412) Human Tagged ORF Clone

Product data:

Product Type: Expression Plasmids
Product Name: eIF1A (EIF1AX) (NM_001412) Human Tagged ORF Clone
Tag: Myc-DDK
Symbol: eIF1A
Synonyms: eIF-1A; eIF-4C; EIF1A; EIF1AP1; EIF4C
Mammalian Cell Selection: Neomycin
Vector: pCMV6-Entry (PS100001)
E. coli Selection: Kanamycin (25 ug/mL)
ORF Nucleotide Sequence: >RC210335 representing NM_001412
Red=Cloning site Blue=ORF Green=Tags(s)

TTTTGTAATACGACTCACTATAGGGCGGCCGGAATTCGTCGACTGGATCCGGTACCGAGGAGATCTGCC
GCC**CGGATCGCC**

ATGCCAAGAATAAAGGTAAGGAGGTAACAAACAGACGCGAGGGTAAGAATGAGAATGAATCTGAAAAA
GAGAACTGGTATCAAAGAGGATGGTCAGGAGTATGCTCAGGTAATCAAATGTTGGAAATGGACGGCT
AGAAGCAATGTGTTTCGATGGTGTAAAGAGGTTATGTCACATCAGAGGAAATGAGAAAAAGGTTTGG
ATAAATACCTCGGACATTATTTGGTTGGTCTCCGAGACTACCAGGATAACAAAGCTGATGTAATTTTAA
AATACAATGCAGACGAAGCTAGAAGTCTGAAGGCATACGGCGAGCTTCCAGAGCATGCTAAAATCAATGA
AACTGATACATTTGGTCCTGGAGATGATGATGAAATTCAGTTTGATGACATTGGAGATGATGATGAAGAT
ATTGATGACATC

ACGCGTACGCGGCCGCTCGAGCAGAACTCATCTCAGAAGAGGATCTGGCAGCAAATGATATCCTGGATT
ACAAGGATGACGACGATAAGGTTTAA

Protein Sequence: >RC210335 representing NM_001412
Red=Cloning site Green=Tags(s)
MPKNKGKGGKNRRRGKNENESEKRELVFKEDGQEYAQVIKMLGNRLEAMCFDGVKRLCHIRGKLRKKVW
INTSDIILVGLRDYQDNKADVILKYNADERSLKAYGELPEHAKINETDTFGPGDDDEIQFDDIDGDDDED
IDDI

TRTRPLEQKLISEEDLAANDILDYKDDDDKV

Chromatograms: https://cdn.origene.com/chromatograms/mk6544_a06.zip



[View online >](#)

Restriction Sites: SgfI-MluI

Cloning Scheme:



ACCN: NM_001412

ORF Size: 432 bp

OTI Disclaimer: The molecular sequence of this clone aligns with the gene accession number as a point of reference only. However, individual transcript sequences of the same gene can differ through naturally occurring variations (e.g. polymorphisms), each with its own valid existence. This clone is substantially in agreement with the reference, but a complete review of all prevailing variants is recommended prior to use. [More info](#)

OTI Annotation: This clone was engineered to express the complete ORF with an expression tag. Expression varies depending on the nature of the gene.

Components: The ORF clone is ion-exchange column purified and shipped in a 2D barcoded Matrix tube containing 10ug of transfection-ready, dried plasmid DNA (reconstitute with 100 ul of water).

Reconstitution Method:

1. Centrifuge at 5,000xg for 5min.
2. Carefully open the tube and add 100ul of sterile water to dissolve the DNA.
3. Close the tube and incubate for 10 minutes at room temperature.
4. Briefly vortex the tube and then do a quick spin (less than 5000xg) to concentrate the liquid at the bottom.
5. Store the suspended plasmid at -20°C. The DNA is stable for at least one year from date of shipping when stored at -20°C.

RefSeq: [NM_001412.4](#)

RefSeq Size: 4431 bp

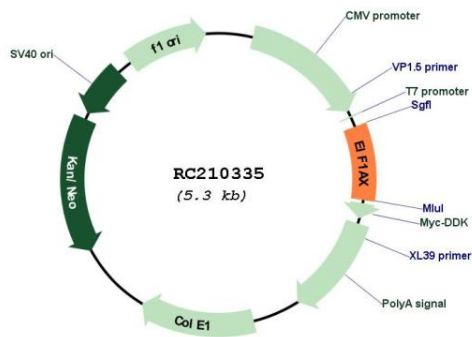
RefSeq ORF: 435 bp

Locus ID: 1964

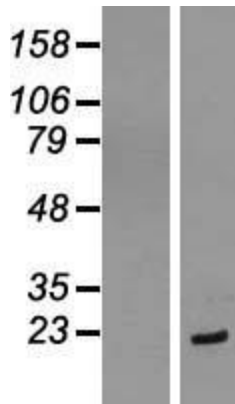
UniProt ID: [P47813](#)
 Cytogenetics: Xp22.12
 Domains: eIF-1a
 MW: 16.3 kDa

Gene Summary: This gene encodes an essential eukaryotic translation initiation factor. The protein is required for the binding of the 43S complex (a 40S subunit, eIF2/GTP/Met-tRNA_i and eIF3) to the 5' end of capped RNA. [provided by RefSeq, Jul 2008]

Product images:



Circular map for RC210335



Western blot validation of overexpression lysate (Cat# [LY419951]) using anti-DDK antibody (Cat# [TA50011-100]). Left: Cell lysates from untransfected HEK293T cells; Right: Cell lysates from HEK293T cells transfected with RC210335 using transfection reagent MegaTran 2.0 (Cat# [TT210002]).