

Product datasheet for **RC210329**

ISLR (NM_005545) Human Tagged ORF Clone

Product data:

Product Type:	Expression Plasmids
Product Name:	ISLR (NM_005545) Human Tagged ORF Clone
Tag:	Myc-DDK
Symbol:	ISLR
Synonyms:	HsT17563; Meflin
Mammalian Cell Selection:	Neomycin
Vector:	pCMV6-Entry (PS100001)
E. coli Selection:	Kanamycin (25 ug/mL)



[View online »](#)

ORF Nucleotide Sequence:

>RC210329 ORF sequence
 Red=Cloning site Blue=ORF Green=Tags(s)

TTTTGTAATACGACTCACTATAGGGCGGCCGGAATTCGTCGACTGGATCCGGTACCGAGGAGATCTGCC
 GCC**CGGATCGCC**

ATGCAGGAGCTGCATCTGCTCTGGTGGGCGCTTCTCTGGGCCTGGCTCAGGCCTGCCCTGAGCCCTGCG
 ACTGTGGGAAAAGTATGGCTTCCAGATCGCCGACTGTGCCTACCGCGACCTAGAATCCGTGCCGCTGG
 CTTCCCGGCCAATGTGACTACACTGAGCCTGTAGCCAAACCGGCTGCCAGGCTTGCCGGAGGGTGCCTTC
 AGGGAGGTGCCCTGCTGCAGTCGCTGTGGCTGGCACACAATGAGATCCGCACGGTGCCGCCGGAGCCC
 TGGCCTCTCTGAGCCATCTCAAGAGCCTGGACCTCAGCCACAATCTCATCTCTGACTTTGCCTGGAGCGA
 CCTGCACAACCTCAGTGCCTCCAATTGCTCAAGATGGACAGCAACGAGCTGACCTTCATCCCCCGCAGC
 GCCTTCCGCAGCCTCCGTGCTCTGGCTCGCTGCAACTCAACCACAACCGCTTGACACATTGGCCGAGG
 GCACCTTACCCCGCTCACCAGCTGTCCACCTGCAGATCAACGAGAACCCTTCGACTGCACCTGCGG
 CATCGTGTGGCTCAAGACATGGGCCCTGACCACGGCCGTGCCATCCCGAGCAGGACAACATCGCTGCG
 ACCTACCCCATGTGCTCAAGGGTACACCGCTGAGCCGCTGCCGCCACTGCCATGCTCGGCGCCCTCAG
 TGCAGCTCAGTACCAACCCAGCCAGGATGGTGCCGAGCTGCGGCCTGGTTTTGTGCTGGCACTGCACTG
 TGATGTGGACGGGAGCCGGCCCTCAGCTTCACTGGCACATCCAGATACCCAGTGGCATTGTGGAGATC
 ACCAGCCCAACGTGGGCACTGATGGGCGTGCCCTGCCTGGCACCCCTGTGGCCAGCTCCAGCCGCGCT
 TCCAGGCTTTGCCAATGGCAGCCTGCTTATCCCCGACTTTGGCAAGCTGGAGGAAGGCACCTACAGCTG
 CCTGGCCACCAATGAGCTGGGCACTGCTGAGAGCTCAGTGGACGTGGCACTGGCCACGCCGGTGGGGT
 GGTGAGGACACACTGGGGCGCAGGTTCCATGGCAAAGCGTTGAGGAAAGGGCTGCTATACGGTTGACA
 ACGAGGTGCAGCCATCAGGGCCGAGGACAATGTGGTCATCATCTACCTCAGCCGTGCTGGGAACCCTGA
 AGCTGCAGTCGCAGAAGGGTCCCTGGGAGCTGCCCCAGGCCCTGCTCCTGCTGGGCCAAAGCCTCCTC
 CTCTTCTTCTCCTCACCTCCTC

ACGCGTACGCGGCCGCTCGAGCAGAACTCATCTCAGAAGAGGATCTGGCAGCAAATGATATCCTGGATT
 ACAAGGATGACGACGATAAGGTTTAA

Protein Sequence:

>RC210329 protein sequence
 Red=Cloning site Green=Tags(s)

MQELHLLWWALLGLAQACPEPCDCGEKYGFQIADCAYRDLESVPPGFANVTTLSANRLPGLPEGAF
 REVPLLQSLWLAHNEIRTVAAGALASLSHLKSLDLSHNLISDFAWSDLHNL SALQLLKMDSNELTFIPRD
 AFRSLRALRSLQLNHNRLHTLAEGTFTPLTALSHLQINENPFDCGIVWLKTWALTTAVSIPEQDNIAC
 TSPHVLKGTPLSRLPPLPCSAPSVQLSYQPSQDGAELRPGFVLALHCDVDGQPAPQLHWHIQIPSGIVEI
 TSPNVGTDGRALPGTPVASSQPRFQAFANGSLLIPDFGKLEEGTYSCLATNELGSAESSVDVALATPGEG
 GEDTLGRRFHGKAVEGKGCYTVDNEVQPSGPEDNVVI IYLSRAGNPEAAVAEGVPGQLPPGLLLLLGQSL
 LFFFLTSF

TRTRPLEQKLISEEDLAANDILDYKDDDDKV

Chromatograms:

https://cdn.origene.com/chromatograms/mk6005_a04.zip

Restriction Sites:

SgfI-MluI

Cloning Scheme:


ACCN: NM_005545

ORF Size: 1284 bp

OTI Disclaimer: The molecular sequence of this clone aligns with the gene accession number as a point of reference only. However, individual transcript sequences of the same gene can differ through naturally occurring variations (e.g. polymorphisms), each with its own valid existence. This clone is substantially in agreement with the reference, but a complete review of all prevailing variants is recommended prior to use. [More info](#)

OTI Annotation: This clone was engineered to express the complete ORF with an expression tag. Expression varies depending on the nature of the gene.

Components: The ORF clone is ion-exchange column purified and shipped in a 2D barcoded Matrix tube containing 10ug of transfection-ready, dried plasmid DNA (reconstitute with 100 ul of water).

- Reconstitution Method:**
1. Centrifuge at 5,000xg for 5min.
 2. Carefully open the tube and add 100ul of sterile water to dissolve the DNA.
 3. Close the tube and incubate for 10 minutes at room temperature.
 4. Briefly vortex the tube and then do a quick spin (less than 5000xg) to concentrate the liquid at the bottom.
 5. Store the suspended plasmid at -20°C. The DNA is stable for at least one year from date of shipping when stored at -20°C.

RefSeq: [NM_005545.4](#)

RefSeq Size: 2312 bp

RefSeq ORF: 1287 bp

Locus ID: 3671

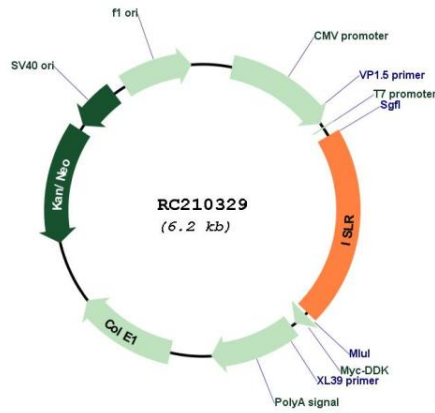
UniProt ID: [O14498](#)

Cytogenetics: 15q24.1

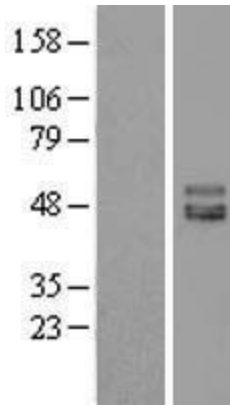
Domains: LRRCT, LRR, LRR_TYP, IGc2, LRR_PS

MW: 46 kDa

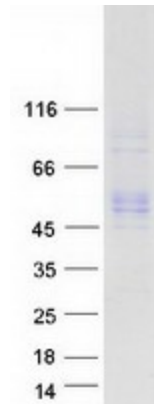
Product images:



Circular map for RC210329



Western blot validation of overexpression lysate (Cat# [LY401705]) using anti-DDK antibody (Cat# [TA50011-100]). Left: Cell lysates from untransfected HEK293T cells; Right: Cell lysates from HEK293T cells transfected with RC210329 using transfection reagent MegaTran 2.0 (Cat# [TT210002]).



Coomassie blue staining of purified ISLR protein (Cat# [TP310329]). The protein was produced from HEK293T cells transfected with ISLR cDNA clone (Cat# RC210329) using MegaTran 2.0 (Cat# [TT210002]).