

Product datasheet for RC210328

UBE2E3 (NM_006357) Human Tagged ORF Clone

Product data:

Product Type: Expression Plasmids
Product Name: UBE2E3 (NM_006357) Human Tagged ORF Clone
Tag: Myc-DDK
Symbol: UBE2E3
Synonyms: UBCH9; UbcM2
Mammalian Cell Selection: Neomycin
Vector: pCMV6-Entry (PS100001)
E. coli Selection: Kanamycin (25 ug/mL)
ORF Nucleotide Sequence: >RC210328 representing NM_006357
Red=Cloning site Blue=ORF Green=Tags(s)

TTTTGTAATACGACTCACTATAGGGCGGCCGGAATTCGTCGACTGGATCCGGTACCGAGGAGATCTGCC
GCC**CGATCGCC**

ATGTCCAGTGATAGGCAAAGGTCCGATGATGAGAGCCCCAGCACCAGCAGTGGCAGTTCAGATGCGGACC
AGCGAGACCCAGCCGCTCCAGAGCCTGAAGAACAAGAGGAAAGAAAACCTTCTGCCACCCAGCAGAAGAA
AAACACCAAACCTCTAGCAAACCACTGCTAAGTTATCCACTAGTGCTAAAAGAATTGAGAAGGAGCTA
GCTGAAATAACCCCTTGATCCTCCTAATTGCAGTGCTGGCCCTAAAGGAGATAACATTTATGAATGGA
GATCAACTATACTTGGTCCACCGGTTCTGTATATGAAGTGGTGTGTTTTTCTGGATATCACATTTTC
ATCAGATTATCCATTTAAGCCACCAAGGTTACTTTCCGCACCAGAATCTATCACTGCAACATCAACAGT
CAGGGAGTCATCTGTCTGGACATCCTTAAAGACAACCTGGAGTCCCGCTTGACTATTTCAAAGGTTTTGC
TGTCTATTTGTTCCCTTTGACAGACTGCAACCCCTGCGGATCCTCTGGTTGGAAGCATAGCCACTCAGTA
TTTGACCAACAGAGCAGAACACGACAGGATAGCCAGACAGTGGACCAAGAGATACGCAACA

ACGCGTACGCGGCCGCTCGAGCAGAACTCATCTCAGAAGAGGATCTGGCAGCAATGATATCCTGGATT
ACAAGGATGACGACGATAAGGTTTAA

Protein Sequence: >RC210328 representing NM_006357
Red=Cloning site Green=Tags(s)

MSSDRQRSDDESPSTSSGSSDADQRDPAAPEPEEQEERKPSATQQKNTKLSKTTAKLSTSAKRIQKEL
AEITLDPPPNCAGPKGDNIYWRSTILGPPGSVYEGGVFFLDITFSSDYFPKPKVTFRTRIIYHCNINS
QGVICLDILKDNWSPAL TISKVLLSICSLLTDCNPADPLVGSIA TQYL TNRAEHDRIARQWTKRYAT

TRTRPLEQKLISEEDLAANDILDYKDDDDKV



Reconstitution Method:

1. Centrifuge at 5,000xg for 5min.
2. Carefully open the tube and add 100ul of sterile water to dissolve the DNA.
3. Close the tube and incubate for 10 minutes at room temperature.
4. Briefly vortex the tube and then do a quick spin (less than 5000xg) to concentrate the liquid at the bottom.
5. Store the suspended plasmid at -20°C. The DNA is stable for at least one year from date of shipping when stored at -20°C.

RefSeq: [NM_006357.4](#)

RefSeq Size: 1559 bp

RefSeq ORF: 624 bp

Locus ID: 10477

UniProt ID: [Q969T4](#)

Cytogenetics: 2q31.3

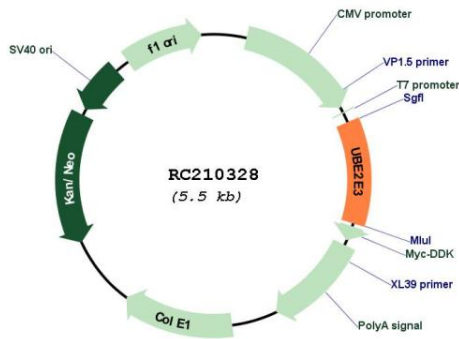
Domains: UBCc

Protein Pathways: Ubiquitin mediated proteolysis

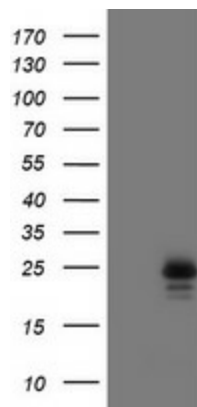
MW: 22.7 kDa

Gene Summary: The modification of proteins with ubiquitin is an important cellular mechanism for targeting abnormal or short-lived proteins for degradation. Ubiquitination involves at least three classes of enzymes: ubiquitin-activating enzymes, or E1s, ubiquitin-conjugating enzymes, or E2s, and ubiquitin-protein ligases, or E3s. This gene encodes a member of the E2 ubiquitin-conjugating enzyme family. The encoded protein shares 100% sequence identity with the mouse and rat counterparts, which indicates that this enzyme is highly conserved in eukaryotes. Multiple alternatively spliced transcript variants encoding the same protein have been found for this gene. [provided by RefSeq, Jun 2013]

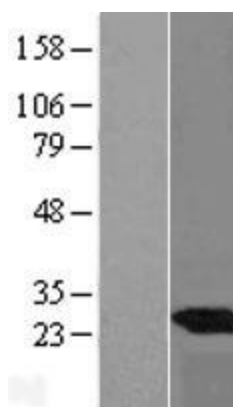
Product images:



Circular map for RC210328



HEK293T cells were transfected with the pCMV6-ENTRY control (Cat# [PS100001], Left lane) or pCMV6-ENTRY UBE2E3 (Cat# RC210328, Right lane) cDNA for 48 hrs and lysed. Equivalent amounts of cell lysates (5 ug per lane) were separated by SDS-PAGE and immunoblotted with anti-UBE2E3(Cat# [TA800082]). Positive lysates [LY416697] (100ug) and [LC416697] (20ug) can be purchased separately from OriGene.



Western blot validation of overexpression lysate (Cat# [LY416697]) using anti-DDK antibody (Cat# [TA50011-100]). Left: Cell lysates from untransfected HEK293T cells; Right: Cell lysates from HEK293T cells transfected with RC210328 using transfection reagent MegaTran 2.0 (Cat# [TT210002]).