

Product datasheet for RC210326

NPTN (NM_017455) Human Tagged ORF Clone

Product data:

Product Type:	Expression Plasmids
Product Name:	NPTN (NM_017455) Human Tagged ORF Clone
Tag:	Myc-DDK
Symbol:	NPTN
Synonyms:	GP55; GP65; np55; np65; SDFR1; SDR1
Mammalian Cell Selection:	Neomycin
Vector:	pCMV6-Entry (PS100001)
E. coli Selection:	Kanamycin (25 ug/mL)
ORF Nucleotide Sequence:	>RC210326 ORF sequence Red=Cloning site Blue=ORF Green=Tags(s)

TTTTGTAATACGACTCACTATAGGGCGCCGGGAATTCGTCGACTGGATCCGGTACCGAGGAGATCTGCC
GCC**CGATCGCC**

ATGTCGGGTTTCGTCGCTGCCAGCGCCCTGGCCCTCTCGCTGTTGCTGGTCTCTGGCTCCCTCCTCCCAG
GGCCAGGCGCCGCTCAGAACGAGCCAAGGATTGTACCAGTGAAGAGGTCATTATTCGAGACAGCCCTGT
TCTCCCTGTCACCCTGCAGTGTAACCTCACCTCCAGCTCTCACACCTTACATACAGCTACTGGACAAAG
AATGGGGTGGAAGTGAAGTCCACTCGTAAGAATGCCAGCAACATGGAGTACAGGATCAATAAGCCGAGAG
CTGAGGATTCAGGCGAATACCACTGCGTATATCACTTTGTCAGCGCTCCTAAAGCAAACGCCACCATTGA
AGTGAAAGCCGCTCCTGACATCACTGGCCATAAACGGAGTGAGAAACAAGAATGAAGGGCAGGATGCCACT
ATGATTGCAAGTCAGTTGGCTACCCCCACCCAGACTGGATATGGCGCAAGAAGGAGAACGGGATGCCCA
TGGACATTGTCAATACCTCTGGCCGCTTCTTCATCATCAACAAGGAAAAATTACACTGAGTTGAACATTGT
GAACCTGCAGATCACGGAAGACCCTGGCGAGTATGAATGTAATGCCACCAACGCCATTGGCTCCGCTCT
GTTGCTACTGTCTCAGGGTGGCGAGCCACCTGGCCCCACTCTGGCCTTTCTTGGGAATTCTGGCTGAAA
TTATCATCCTTGTGGTGATCATTGTTGTGTATGAGAAGAGGAAGAGGCCAGATGAGGTTCTGACGATGA
TGAACCACTGGACCAATGAAAACCAACTCTACCAACAATCACAAGATAAAAACTTGCGCCAGAGAAAC
ACAAAT

ACGCGTACGCGGCCGCTCGAGCAGAAACTCATCTCAGAAGAGGATCTGGCAGCAAATGATATCCTGGATT
ACAAGGATGACGACGATAAGGTTTAA



[View online »](#)

Protein Sequence: >RC210326 protein sequence
Red=Cloning site Green=Tags(s)

MSGSSLPSALALSLLLVSGSLLPGPGAAQNEPRIVTSEEVIIRDSPVLPVTLQCNTLSSSHTLTYSYWTK
 NGVELSATRKNASNMEYRINKPRAEDSGEYHCYVHFVSAPKANATIEVKAAPDITGHRSENKNEGQDAT
 MYCKSVGYPHPDWIWRKKENGMPMDIVNTSGRFFIINKENYTELNIVNLQITEDPGEYECNATNAIGSAS
 VVTVLRVRSHLAPLWPFLGILAEIIILVVIIIVVEKRRKPDEVPDDDEPAGPMKTNSTNNHKDKNLRQRN
 TN

TRTRPLEQKLISEEDLAANDILDYKDDDDKV

Chromatograms: https://cdn.origene.com/chromatograms/mk6367_a11.zip

Restriction Sites: SgfI-MluI

Cloning Scheme:

Cloning sites used for ORF Shuttling:



* The last codon before the Stop codon of the ORF

ACCN: NM_017455

ORF Size: 846 bp

OTI Disclaimer: The molecular sequence of this clone aligns with the gene accession number as a point of reference only. However, individual transcript sequences of the same gene can differ through naturally occurring variations (e.g. polymorphisms), each with its own valid existence. This clone is substantially in agreement with the reference, but a complete review of all prevailing variants is recommended prior to use. [More info](#)

OTI Annotation: This clone was engineered to express the complete ORF with an expression tag. Expression varies depending on the nature of the gene.

Components: The ORF clone is ion-exchange column purified and shipped in a 2D barcoded Matrix tube containing 10ug of transfection-ready, dried plasmid DNA (reconstitute with 100 ul of water).

Reconstitution Method:

1. Centrifuge at 5,000xg for 5min.
2. Carefully open the tube and add 100ul of sterile water to dissolve the DNA.
3. Close the tube and incubate for 10 minutes at room temperature.
4. Briefly vortex the tube and then do a quick spin (less than 5000xg) to concentrate the liquid at the bottom.
5. Store the suspended plasmid at -20°C. The DNA is stable for at least one year from date of shipping when stored at -20°C.

RefSeq: [NM_017455.4](#)

RefSeq Size: 2106 bp

RefSeq ORF: 849 bp

Locus ID: 27020

UniProt ID: [Q9Y639](#)

Cytogenetics: 15q24.1

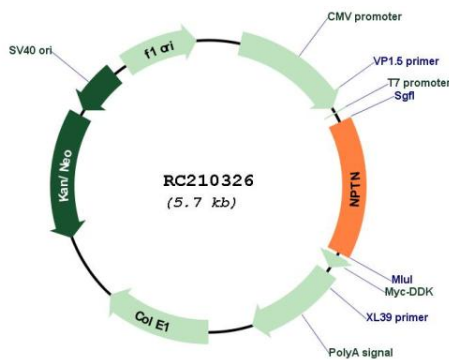
Domains: ig, IGc2, IG

Protein Families: Druggable Genome, Transmembrane

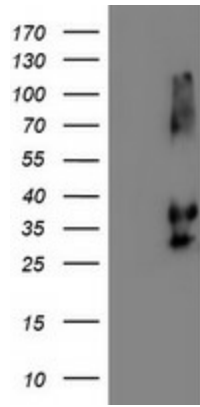
MW: 31.3 kDa

Gene Summary: This gene encodes a type I transmembrane protein belonging to the Ig superfamily. The protein is believed to be involved in cell-cell interactions or cell-substrate interactions. Alternative splicing results in multiple transcript variants. [provided by RefSeq, May 2009]

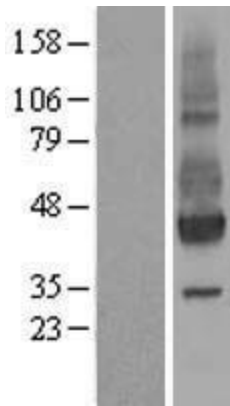
Product images:



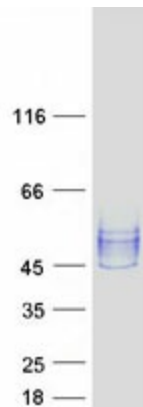
Circular map for RC210326



HEK293T cells were transfected with the pCMV6-ENTRY control (Cat# [PS100001], Left lane) or pCMV6-ENTRY NPTN (Cat# RC210326, Right lane) cDNA for 48 hrs and lysed. Equivalent amounts of cell lysates (5 ug per lane) were separated by SDS-PAGE and immunoblotted with anti-NPTN (Cat# [TA504330]). Positive lysates [LY413759] (100ug) and [LC413759] (20ug) can be purchased separately from OriGene.



Western blot validation of overexpression lysate (Cat# [LY413759]) using anti-DDK antibody (Cat# [TA50011-100]). Left: Cell lysates from untransfected HEK293T cells; Right: Cell lysates from HEK293T cells transfected with RC210326 using transfection reagent MegaTran 2.0 (Cat# [TT210002]).



Coomassie blue staining of purified NPTN protein (Cat# [TP310326]). The protein was produced from HEK293T cells transfected with NPTN cDNA clone (Cat# RC210326) using MegaTran 2.0 (Cat# [TT210002]).