

Product datasheet for RC210324

STX17 (NM_017919) Human Tagged ORF Clone

Product data:

Product Type:	Expression Plasmids
Product Name:	STX17 (NM_017919) Human Tagged ORF Clone
Tag:	Myc-DDK
Symbol:	STX17
Mammalian Cell Selection:	Neomycin
Vector:	pCMV6-Entry (PS100001)
E. coli Selection:	Kanamycin (25 ug/mL)
ORF Nucleotide Sequence:	>RC210324 ORF sequence Red=Cloning site Blue=ORF Green=Tags(s)

TTTTGTAATACGACTCACTATAGGGCGGCCGGAATTCGTCGACTGGATCCGGTACCGAGGAGATCTGCC
GCCCGATCGCC

ATGTCTGAAGATGAAGAAAAAGTGAAATTACGCCGTCTTGAACCAGCTATCCAGAAATTCATTAAGATAG
TAATCCCAACAGACCTGGAAAGTTAAGAAAGCACCAGATAAATATTGAGAAGTATCAAAGGTGCGGAAT
CTGGGACAAGTTGCATGAAGAGCATATCAATGCAGGACGTACAGTTCAGCAACTCCGATCCAATATCCGA
GAAATTTGAGAACTTTGTTTGAAGTCCGAAAGGATGACCTAGTACTTCTGAAGAGAATGATAGATCCTG
TTAAAGAAGAAGCATCAGCAGCAACAGCAGAATTTCTCCAACCTCATTGGAACTGTAGAGAAGAACTTAA
GAAGCAATTTAATGATGAAGAACTTTGCTACAGCCTCCTTTGACCAGATCCATGACTGTTGGTGGAGCA
TTTCATACTACTGAAGCTGAAGCTAGTTCTCAGAGTTTGACTCAGATATATGCCTTACCTGAAATTCCTC
AAGATCAAAATGCTGCAGAATCGTGGGAAACCTTAGAAGCGGACTTAATTGAACTTAGCCAACTGGTCAC
TGACTTCTCTCCTAGTGAATTCTCAGCAGGAGAAGATTGACAGCATTGCAGACCATGTCAACAGTGCT
GCTGTGAATGTTGAAGAGGGAACCAAAACTTAGGGAAGGCTGCAAAATACAAGCTGGCAGCTCTGCCTG
TGGCAGGTGCACTCATCGGGGAATGGTAGGGGTCTATTGGCCTCCTGCAGGCTTCAAAGTGGCAGG
AATTGCAGCTGCACTTGGTGGTGGGTGTTGGCTTACAGGTGAAAAATTGATACAAAGAAAGAAACAG
AAAATGATGGAGAAGCTCACTTCCAGCTGTCCAGATCTTCCAGCCAACTGACAAGAAATCGAGT

ACGCGTACGCGGCCGCTCGAGCAGAACTCATCTCAGAAGAGGATCTGGCAGCAAATGATATCCTGGATT
ACAAGGATGACGACGATAAGGTTTAA



[View online »](#)

Protein Sequence: >RC210324 protein sequence
Red=Cloning site Green=Tags(s)

MSEDEEKVKLRRLEPAIQKFIKIVIPTDLERLRKHQINIEKYQRCGIWDKLHEEHINAGRTVQQLRSNIR
 EIEKLCCLKVRKDDLVLKRMIDPVKEEASAATAEFLQLHLESVEELKKQFNDEETLLQPPLTRSMVGGGA
 FHTTEAEASSQSLTQIYALPEIPQDQNAAESWETLEADLIELSQLVTDVDFSLVNSQQEKIDSIADHVNSA
 AVNVEEGTKNLGKAAKYKLAALPVAGALIGGMVGGPIGLLAGFKVAGIAAALGGVVLGFTGGKLIQRKKQ
 KMMEKLTSSCPDLPSTQDKKCS

TRTRPLEQKLISEEDLAANDILDYKDDDDKV

Chromatograms: https://cdn.origene.com/chromatograms/mk6721_e05.zip

Restriction Sites: Sgfl-MluI

Cloning Scheme:

Cloning sites used for ORF Shuttling:



* The last codon before the Stop codon of the ORF

ACCN: NM_017919

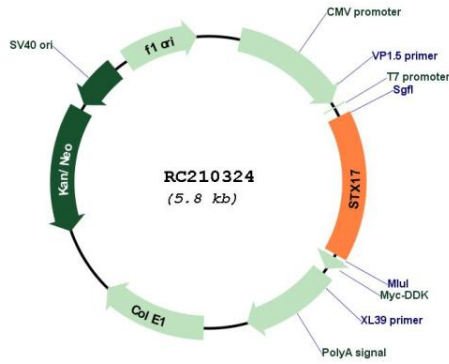
ORF Size: 906 bp

OTI Disclaimer: Due to the inherent nature of this plasmid, standard methods to replicate additional amounts of DNA in E. coli are highly likely to result in mutations and/or rearrangements. Therefore, OriGene does not guarantee the capability to replicate this plasmid DNA. Additional amounts of DNA can be purchased from OriGene with batch-specific, full-sequence verification at a reduced cost. Please contact our customer care team at custsupport@origene.com or by calling 301.340.3188 option 3 for pricing and delivery.

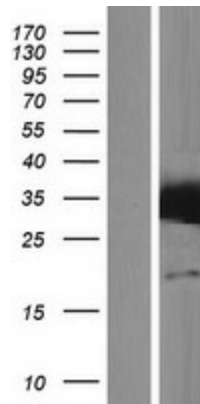
The molecular sequence of this clone aligns with the gene accession number as a point of reference only. However, individual transcript sequences of the same gene can differ through naturally occurring variations (e.g. polymorphisms), each with its own valid existence. This clone is substantially in agreement with the reference, but a complete review of all prevailing variants is recommended prior to use. [More info](#)

OTI Annotation:	This clone was engineered to express the complete ORF with an expression tag. Expression varies depending on the nature of the gene.
Components:	The ORF clone is ion-exchange column purified and shipped in a 2D barcoded Matrix tube containing 10ug of transfection-ready, dried plasmid DNA (reconstitute with 100 ul of water).
Reconstitution Method:	<ol style="list-style-type: none">1. Centrifuge at 5,000xg for 5min.2. Carefully open the tube and add 100ul of sterile water to dissolve the DNA.3. Close the tube and incubate for 10 minutes at room temperature.4. Briefly vortex the tube and then do a quick spin (less than 5000xg) to concentrate the liquid at the bottom.5. Store the suspended plasmid at -20°C. The DNA is stable for at least one year from date of shipping when stored at -20°C.
RefSeq:	NM_017919.3
RefSeq Size:	6910 bp
RefSeq ORF:	909 bp
Locus ID:	55014
UniProt ID:	P56962
Cytogenetics:	9q31.1
Domains:	t_SNARE
Protein Families:	Druggable Genome, Transmembrane
Protein Pathways:	SNARE interactions in vesicular transport
MW:	33.3 kDa
Gene Summary:	SNAREs, soluble N-ethylmaleimide-sensitive factor-attachment protein receptors, are essential proteins for fusion of cellular membranes. SNAREs localized on opposing membranes assemble to form a trans-SNARE complex, an extended, parallel four alpha-helical bundle that drives membrane fusion (PubMed:23217709, PubMed:25686604, PubMed:28306502). STX17 is a SNARE of the autophagosome involved in autophagy through the direct control of autophagosome membrane fusion with the lysosome membrane (PubMed:23217709, PubMed:25686604, PubMed:28306502). May also play a role in the early secretory pathway where it may maintain the architecture of the endoplasmic reticulum-Golgi intermediate compartment/ERGIC and Golgi and/or regulate transport between the endoplasmic reticulum, the ERGIC and the Golgi (PubMed:21545355).[UniProtKB/Swiss-Prot Function]

Product images:



Circular map for RC210324



Western blot validation of overexpression lysate (Cat# [LY413448]) using anti-DDK antibody (Cat# [TA50011-100]). Left: Cell lysates from untransfected HEK293T cells; Right: Cell lysates from HEK293T cells transfected with RC210324 using transfection reagent MegaTran 2.0 (Cat# [TT210002]).