

Product datasheet for **RC210318**

IER5 (NM_016545) Human Tagged ORF Clone

Product data:

Product Type:	Expression Plasmids
Product Name:	IER5 (NM_016545) Human Tagged ORF Clone
Tag:	Myc-DDK
Symbol:	IER5
Synonyms:	SBBI48
Mammalian Cell Selection:	Neomycin
Vector:	pCMV6-Entry (PS100001)
E. coli Selection:	Kanamycin (25 ug/mL)
ORF Nucleotide Sequence:	>RC210318 representing NM_016545 Red=Cloning site Blue=ORF Green=Tags(s)

TTTTGTAATACGACTCACTATAGGGCGGCCGGAATTCGTCGACTGGATCCGGTACCGAGGAGATCTGCC
GCC**CGATCGCC**

ATGGAGTTC AAGCTGGAGGCTCATCGCATCGTCAGCATCTCTCTGGGCAAGATCTACAACCTCGGGGTCC
AGCGGGCGGCATCAAGCTGCATAAGAACCTCCTGGTCTCGTGGTGCTGCGCAGCGCCCGCAAGTCTA
CCTGAGCGACCCGTGCCCGCCTCTACCTGGCCGGTCCCCTGGGACCCCGGCCCGCCACCGCAGCAG
CAGCCCGGGAGCCGGCGCCGGCCACCCGCCGGTGGGAGAGCCGCCCGCCCGCCGCTCGTGCCT
CTTGGCCGGAGACCGAGCCGAGCCGGAGCGCTCCTCCGTCTCAGACGCGCCGGGTAGGGGACGAGGT
GCCGGTGGCCACGGTACTGGAGTCGGGGACGTTTTTCAGGGCGGAGAGCGGACGCGACGGAAGCTGCC
TGGAGCCGCTGGAGGGCCGCGCCAGGCGCGGCCAGAGAAGCCGAGGGTACCGCCGGAGGCTGGGGCG
TCTTCCCCGAGGTATCTCGTGCCGCGCGCCGCCCTGCGGCTGCCCCCTAGGCGGGGAGGACCCCGCGG
TACACCGCCGCGACCCCGCGCTGCCTGCTGCTGCGCGCCGCGACAGCGGAGGACGAGCCCCCGCG
CCGCCCGCGGTGTGCCCAAGGAGCGTGCAGCGCGGGGTGGCGGGCGCCAGCGGCTGCCCGCGC
CCGGCTCGACCCCGCTCAAGAAGCCCGCCGGAACCTTAGAGCAGCCCGGAGTGGAGGAGAGGACGACGA
CGCGGAGGAGATGGAGACCGGAACGTGGCTAACCTCATCAGCATCTTCGGTTCCAGTTTCTCGGGACTC
CTACGGAAAAGCCCCGGGGCGCGAGAGGAAGAGGAGGAGAGGAGAGCGGTCCGGAAGCCCGCGAGC
CGGGCAGATCTGCTGCATAAGCCGGTCTGAGAGACATGAACCCCTGGAGCACAGCCATCGTGGCCCT
C

ACGCGTACGCGGCCGCTCGAGCAGAACTCATCTCAGAAGAGGATCTGGCAGCAAATGATATCCTGGATT
ACAAGGATGACGACGATAAGGTTTAA



[View online »](#)

Protein Sequence: >RC210318 representing NM_016545
 Red=Cloning site Green=Tags(s)

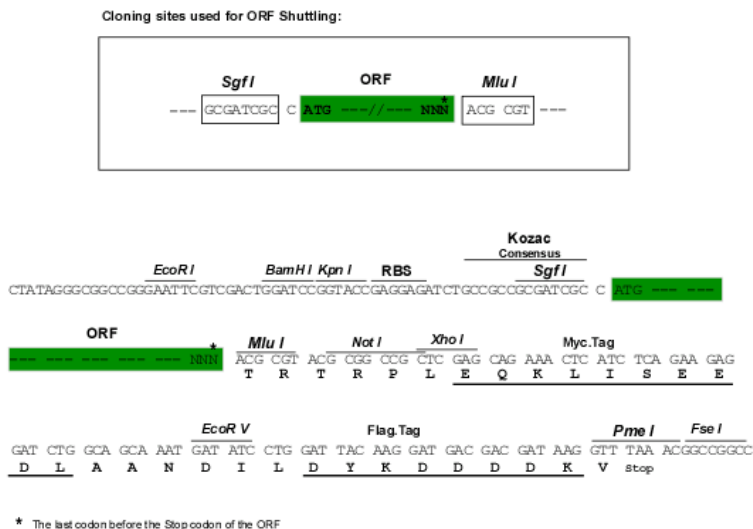
```
MEFKLEAHRIVSISLGIYNSRVQRGGIKLHKLLVSLVLR SARQVYVSDPCPGLYLAGPAGTPAPPPQQ
QPG EPAAGPPAGWGEPPPPAARASWPETE QPERSVSDAPRVGDEVVATVTGVDV FQGG EADATEAA
WSRV EGP RQA AAREAGT AGGWG V FPEVSR AARRPCG CPLGGEDPPGTPAATPRAACCA PRPAE DEPPA
PPAV C PRKRCAAGVGGG P AGCPAGS TPLK KPRRNLE QPPSGGEDDDA EEMETGNVANLISIFGSSF SGL
LRKSPGGG REEEEGEESGPEAAEPGQIC CDKPVLRDMNPWSTAI VAF
```

TRTRPLEQKLISEEDLAANDILDYKDDDDKV

Chromatograms: https://cdn.origene.com/chromatograms/mg3278_g09.zip

Restriction Sites: SgfI-MluI

Cloning Scheme:



ACCN: NM_016545

ORF Size: 981 bp

OTI Disclaimer: The molecular sequence of this clone aligns with the gene accession number as a point of reference only. However, individual transcript sequences of the same gene can differ through naturally occurring variations (e.g. polymorphisms), each with its own valid existence. This clone is substantially in agreement with the reference, but a complete review of all prevailing variants is recommended prior to use. [More info](#)

OTI Annotation: This clone was engineered to express the complete ORF with an expression tag. Expression varies depending on the nature of the gene.

Components: The ORF clone is ion-exchange column purified and shipped in a 2D barcoded Matrix tube containing 10ug of transfection-ready, dried plasmid DNA (reconstitute with 100 ul of water).

Reconstitution Method:

1. Centrifuge at 5,000xg for 5min.
2. Carefully open the tube and add 100ul of sterile water to dissolve the DNA.
3. Close the tube and incubate for 10 minutes at room temperature.
4. Briefly vortex the tube and then do a quick spin (less than 5000xg) to concentrate the liquid at the bottom.
5. Store the suspended plasmid at -20°C. The DNA is stable for at least one year from date of shipping when stored at -20°C.

RefSeq: [NM_016545.3](#), [NP_057629.1](#)

RefSeq Size: 2369 bp

RefSeq ORF: 984 bp

Locus ID: 51278

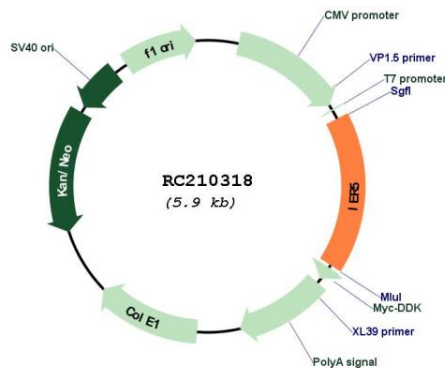
UniProt ID: [Q5VY09](#)

Cytogenetics: 1q25.3

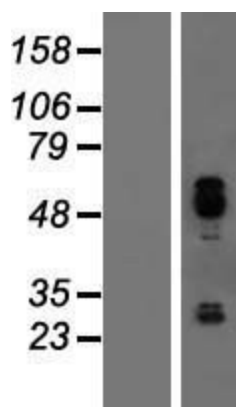
MW: 33.5 kDa

Gene Summary: This gene encodes a protein that is similar to other immediate early response proteins. In the mouse, a similar gene may play an important role in mediating the cellular response to mitogenic signals. Studies in rats found the expression of a similar gene to be increased after waking and sleep deprivation. [provided by RefSeq, Jul 2008]

Product images:



Circular map for RC210318



Western blot validation of overexpression lysate (Cat# [LY413918]) using anti-DDK antibody (Cat# [TA50011-100]). Left: Cell lysates from untransfected HEK293T cells; Right: Cell lysates from HEK293T cells transfected with RC210318 using transfection reagent MegaTran 2.0 (Cat# [TT210002]).