

Product datasheet for RC210315

SURF4 (NM_033161) Human Tagged ORF Clone

Product data:

Product Type:	Expression Plasmids
Product Name:	SURF4 (NM_033161) Human Tagged ORF Clone
Tag:	Myc-DDK
Symbol:	SURF4
Synonyms:	ERV29
Mammalian Cell Selection:	Neomycin
Vector:	pCMV6-Entry (PS100001)
E. coli Selection:	Kanamycin (25 ug/mL)
ORF Nucleotide Sequence:	>RC210315 ORF sequence Red=Cloning site Blue=ORF Green=Tags(s)

TTTTGTAATACGACTCACTATAGGGCGGCCGGAATTCGTCGACTGGATCCGGTACCGAGGAGATCTGCC
GCC**CGATCGCC**

ATGGGCCAGAACGACCTGATGGGCACGGCCGAGGACTTCGCCGACCAGTTCCTCCGTGTACAAAGCAGT
ACCTGCCCCACGTGGCGCGCCTCTGTCTGATCAGCACCTTCCTGGAGGACGGCATCCGTATGTGGTTCCA
GTGGAGCGAGCAGCGGACTACATCGACACCACCTGGAAGTGGGCTACCTGCTGGCCTCGTCTTCGTC
TTCTCAACTTGCTGGGACAGCTGACTGGCTGCGTCTGGTGTGAGCAGGAACCTCGTGCAGTACGCC
GCTTCGGGCTCTTTGGAATCATAGCTCTGCAGACGATTGCCTACAGCATTTTATGGGACTTGAAGTTTTT
GATGAGGAACCTGGCCCTGGGAGGAGGCTGTTGCTGCTCTAGCAGAATCCCGTTCTGAAGGGAAGAGC
ATGTTTGCGGGCTCCCCACCATGCGTGAGAGCTCCCCAAACAGTACATGCAGCTCGGAGGCAGGGTCT
TGCTGGTCTGATGTTTATGACCCCTCTCACTTTGACGCCAGCTTCTTTTCTATTGTCCAGAACATCGT
GGGCACAGCTCTGATGATTTTAGTGGCCATTGGTTTTAAACCAAGCTGGCTGCTTTGACTCTTGTGTG
TGGCTCTTTGCCATCAACGTATATTTCAACGCCTCTGGACCATTCCAGTCTACAAGCCCATGCATGACT
TCCTGAAATACGACTTCTCCAGACCATGTCGGTGATTGGGGCTTGCTCCTGGTGGTGGCCCTGGGCC
TGGGGTGTCTCCATGGATGAGAAGAAGAAGGAGTGG

ACGCGTACGCGGCCGCTCGAGCAGAAACTCATCTCAGAAGAGGATCTGGCAGCAAATGATATCCTGGATT
ACAAGGATGACGACGATAAGGTTTAA



[View online »](#)

Reconstitution Method:

1. Centrifuge at 5,000xg for 5min.
2. Carefully open the tube and add 100ul of sterile water to dissolve the DNA.
3. Close the tube and incubate for 10 minutes at room temperature.
4. Briefly vortex the tube and then do a quick spin (less than 5000xg) to concentrate the liquid at the bottom.
5. Store the suspended plasmid at -20°C. The DNA is stable for at least one year from date of shipping when stored at -20°C.

RefSeq: [NM_033161.4](#)

RefSeq Size: 3068 bp

RefSeq ORF: 810 bp

Locus ID: 6836

UniProt ID: [O15260](#)

Cytogenetics: 9q34.2

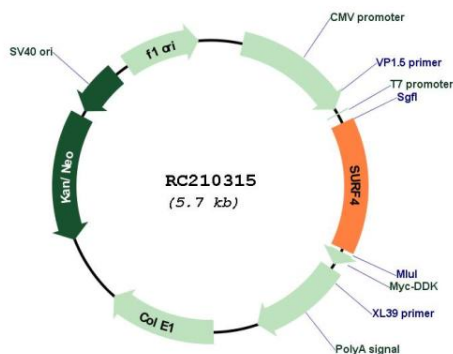
Domains: SURF4

Protein Families: Transmembrane

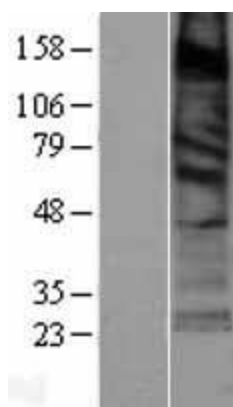
MW: 30.4 kDa

Gene Summary: This gene is located in the surfeit gene cluster, which is comprised of very tightly linked housekeeping genes that do not share sequence similarity. The encoded protein is a conserved integral membrane protein that interacts with endoplasmic reticulum-Golgi intermediate compartment proteins. Disruption of this gene results in reduced numbers of endoplasmic reticulum-Golgi intermediate compartment clusters and redistribution of coat protein I to the cytosol. Alternate splicing results in multiple transcript variants. [provided by RefSeq, Jul 2013]

Product images:



Circular map for RC210315



Western blot validation of overexpression lysate (Cat# [LY403227]) using anti-DDK antibody (Cat# [TA50011-100]). Left: Cell lysates from untransfected HEK293T cells; Right: Cell lysates from HEK293T cells transfected with RC210315 using transfection reagent MegaTran 2.0 (Cat# [TT210002]).