

Product datasheet for RC210312L1

CNDP1 (NM_032649) Human Tagged Lenti ORF Clone

Product data:

Product Type:	Expression Plasmids
Product Name:	CNDP1 (NM_032649) Human Tagged Lenti ORF Clone
Tag:	Myc-DDK
Symbol:	CNDP1
Synonyms:	CN1; CPGL2; HsT2308
Mammalian Cell Selection:	None
Vector:	pLenti-C-Myc-DDK (PS100064)
E. coli Selection:	Chloramphenicol (34 ug/mL)
ORF Nucleotide Sequence:	The ORF insert of this clone is exactly the same as(RC210312).
Restriction Sites:	SgfI-MluI
Cloning Scheme:	

Cloning sites used for ORF Shuttling:



* The last codon before the Stop codon of the ORF.

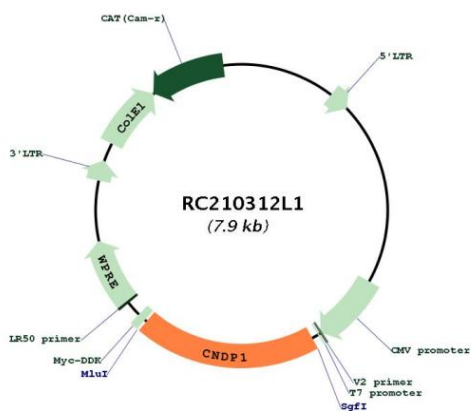
ACCN:	NM_032649
ORF Size:	1524 bp



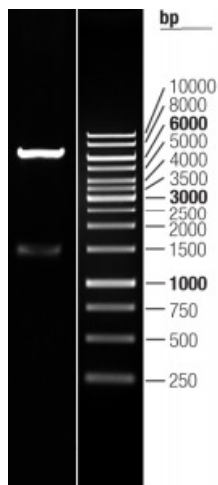
[View online »](#)

OTI Disclaimer:	The molecular sequence of this clone aligns with the gene accession number as a point of reference only. However, individual transcript sequences of the same gene can differ through naturally occurring variations (e.g. polymorphisms), each with its own valid existence. This clone is substantially in agreement with the reference, but a complete review of all prevailing variants is recommended prior to use. More info
OTI Annotation:	This clone was engineered to express the complete ORF with an expression tag. Expression varies depending on the nature of the gene.
Components:	The ORF clone is ion-exchange column purified and shipped in a 2D barcoded Matrix tube containing 10ug of transfection-ready, dried plasmid DNA (reconstitute with 100 ul of water).
Reconstitution Method:	<ol style="list-style-type: none">1. Centrifuge at 5,000xg for 5min.2. Carefully open the tube and add 100ul of sterile water to dissolve the DNA.3. Close the tube and incubate for 10 minutes at room temperature.4. Briefly vortex the tube and then do a quick spin (less than 5000xg) to concentrate the liquid at the bottom.5. Store the suspended plasmid at -20°C. The DNA is stable for at least one year from date of shipping when stored at -20°C.
RefSeq:	NM_032649.5
RefSeq Size:	2211 bp
RefSeq ORF:	1524 bp
Locus ID:	84735
UniProt ID:	Q96KN2
Cytogenetics:	18q22.3
Domains:	Peptidase_M20
Protein Families:	Protease, Secreted Protein
Protein Pathways:	beta-Alanine metabolism, Histidine metabolism, Metabolic pathways
MW:	56.8 kDa
Gene Summary:	This gene encodes a member of the M20 metalloprotease family. The encoded protein is specifically expressed in the brain, is a homodimeric dipeptidase which was identified as human carnosinase. This gene contains trinucleotide (CTG) repeat length polymorphism in the coding region. [provided by RefSeq, Jul 2008]

Product images:



Circular map for RC210312L1



Double digestion of RC210312L1 using SgfI and MluI