

Product datasheet for **RC210312**

CNDP1 (NM_032649) Human Tagged ORF Clone

Product data:

Product Type:	Expression Plasmids
Product Name:	CNDP1 (NM_032649) Human Tagged ORF Clone
Tag:	Myc-DDK
Symbol:	CNDP1
Synonyms:	CN1; CPGL2; HsT2308
Mammalian Cell Selection:	Neomycin
Vector:	pCMV6-Entry (PS100001)
E. coli Selection:	Kanamycin (25 ug/mL)



[View online »](#)

ORF Nucleotide
Sequence:

>RC210312 ORF sequence
 Red=Cloning site Blue=ORF Green=Tags(s)

TTTTGTAATACGACTCACTATAGGGCGGCCGGAATTCGTCGACTGGATCCGGTACCGAGGAGATCTGCC
 GCCGCGATCGCC

ATGGATCCCAAACCTCGGAGAATGGCTGCGTCCCTGCTGGCTGTGCTGCTGCTGCTGCTGGAGCGCG
 GCATGTTCTCCTCACCCTCCCGCCCGGCGCTGTTAGAGAAAAGTCTTCCAGTACATTGACCTCCATCA
 GGATGAATTTGTGACAGCGCTGAAGGAGTGGTGGCCATCGAGAGCGACTCTGTCCAGCCTGTGCCTCGC
 TTCAGACAAGAGCTCTTCAAGATGATGGCCGTGGCTGCGGACACGCTGCAGCGCCTGGGGGCCCGTGTGG
 CCTCGGTGGACATGGTCTCAGCAGCTGCCCGATGGTCAAGTCTTCCAATACCTCCCGTCATCTGGC
 CGAACTGGGGAGCGATCCACGAAAGGCACCGTGTGCTTCTACGGCCACTGGACGTGCAGCCTGCTGAC
 CGGGCGATGGTGGCTCAGGACCCCTATGTGCTGACGGAGGTAGACGGGAACTTTATGGACGAGGAG
 CGACCGACAACAAAGCCCTGTCTTGGCTTGGATCAATGCTGTGAGCGCCTTACAGAGCCCTGGAGCAAGA
 TCTTCTGTGAATATCAAATTCATCATTGAGGGGATGGAAGGGTGGCTCTGTTGCCCTGGAGGAACTT
 GTGGAAAAAGAAAAGGACCGATTCTTCTGGTGTGGACTACATTGTAATTTAGATAACCTGTGGATCA
 GCCAAAGGAAGCCAGCAATCACTTACGGAACCCGGGGAACAGCTACTCATGGTGGAGGTGAAATGCAG
 AGACCAGGATTTCACTCAGGAACCTTTGGTGGCATCCTTAATGAACCAATGGCTGATCTGGTTGCTCTT
 CTCGGTAGCCTGGTAGACTCGTCTGGTCATATCCTGGTCCCTGGAATCTATGATGAAGTGGTTCTCTTA
 CAGAAGAGGAAATAAATACATACAAAGCCATCCATCTAGACCTAGAAGAATACCGGAATAGCAGCCGGGT
 TGAGAAATTTCTGTTGATACTAAGGAGGAGATTCTAATGCACCTCTGGAGGTACCCATCTTTCTATT
 CATTGGGATCGAGGGCGCGTTTGATGAGCCTGGAACATAACAGTACATACCTGGCCGAGTTATAGGAAAT
 TTTCAATCCGCTAGTCCCTCACATGAATGTGCTGCGGTGAAAAACAGGTGACACGACATCTTGAAGA
 TGTGTTCTCCAAAAGAAAATAGTTCCAACAAGATGGTTGTTCCATGACTCTAGGACTACACCCGTGGATT
 GCAAATATTGATGACACCAGTATCTCGCAGCAAAAAGAGCGATCAGAACAGTGTGGAAACAGAACAG
 ATATGATCCGGGATGGATCCACCATTCCAATTGCCAAAATGTTCCAGGAGATCGTCCACAAGAGCGTGGT
 GCTAATCCGCTGGGAGCTGTTGATGATGGAGAACATTCCGAGAATGAGAAAATCAACAGGTGGAACCTAC
 ATAGAGGGAACCAAATTATTTGCTGCCTTTTCTTAGAGATGGCCAGCTCCAT

ACGCGTACGCGGCCGCTCGAGCAGAACTCATCTCAGAAGAGGATCTGGCAGCAAATGATATCCTGGATT
 ACAAGGATGACGACGATAAGGTTTAA

Protein Sequence:

>RC210312 protein sequence
 Red=Cloning site Green=Tags(s)

MDPKLGRMAASLLAVLLLLLLERGMFSSPSPPALLEKVFQYIDLHQDEFVQTLKEWVAIESDSVQPVPR
 FRQELFRMMAVAADTLQRLGARVASVDMGPQQLPDGQSLPIPPVILAEELGSDPTKGTVCFYGHLDVQPAD
 RGDGWLTDPPYVLEVDGKLYGRGATDNKGPVLAWINAVSAFRALEQDLVPNIKFIIEGMEEAGSVALEEL
 VEKEKDRFFSGVDYIVISDNLWISQRKPAITYGTRGNSYFMVEVKCRDQDFHSGTFFGGILNEPMADLVAL
 LGSLVDSSGHILVPGIYDEVVPLTEEEINTYKAIHLDL EEYRNSSRVEKFLFDTKEEILMHLWRYPSLSI
 HGIEGAFDEPGTKVIPGRVIGKFSIRLVPHMNVSAREKQVTRHLEDVFSKRNSNKMVVSMTLGLHPWI
 ANIDDTQYLAAKRAIRTVFGTEPDMIRDGSTIPIAKMFQEI VHKSVVLIPLGAVDDGEHSQNEKINRWNY
 IEGTKLFAAFFLEMAQLH

TRTRPLEQKLI SEEDLAANDILDYKDDDDKV

Chromatograms:

https://cdn.origene.com/chromatograms/mk6003_e08.zip

Restriction Sites:

Sgfl-MluI

Cloning Scheme:


ACCN: NM_032649

ORF Size: 1524 bp

OTI Disclaimer: The molecular sequence of this clone aligns with the gene accession number as a point of reference only. However, individual transcript sequences of the same gene can differ through naturally occurring variations (e.g. polymorphisms), each with its own valid existence. This clone is substantially in agreement with the reference, but a complete review of all prevailing variants is recommended prior to use. [More info](#)

OTI Annotation: This clone was engineered to express the complete ORF with an expression tag. Expression varies depending on the nature of the gene.

Components: The ORF clone is ion-exchange column purified and shipped in a 2D barcoded Matrix tube containing 10ug of transfection-ready, dried plasmid DNA (reconstitute with 100 ul of water).

Reconstitution Method:

1. Centrifuge at 5,000xg for 5min.
2. Carefully open the tube and add 100ul of sterile water to dissolve the DNA.
3. Close the tube and incubate for 10 minutes at room temperature.
4. Briefly vortex the tube and then do a quick spin (less than 5000xg) to concentrate the liquid at the bottom.
5. Store the suspended plasmid at -20°C. The DNA is stable for at least one year from date of shipping when stored at -20°C.

RefSeq: [NM_032649.6](#)

RefSeq Size: 2211 bp

RefSeq ORF: 1524 bp

Locus ID: 84735

UniProt ID: [Q96KN2](#)

Cytogenetics: 18q22.3

Domains: Peptidase_M20

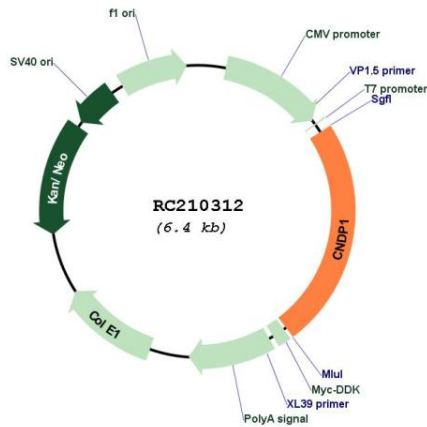
Protein Families: Protease, Secreted Protein

Protein Pathways: beta-Alanine metabolism, Histidine metabolism, Metabolic pathways

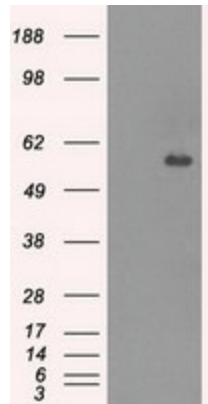
MW: 56.8 kDa

Gene Summary: This gene encodes a member of the M20 metalloprotease family. The encoded protein is specifically expressed in the brain, is a homodimeric dipeptidase which was identified as human carnosinase. This gene contains trinucleotide (CTG) repeat length polymorphism in the coding region. [provided by RefSeq, Jul 2008]

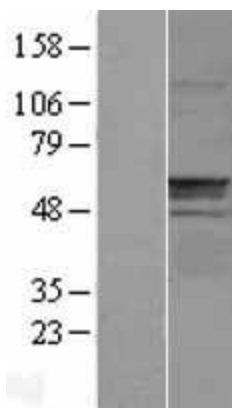
Product images:



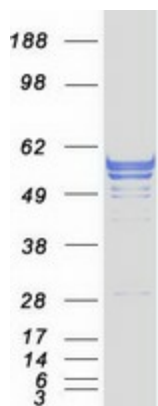
Circular map for RC210312



HEK293T cells were transfected with the pCMV6-ENTRY control (Cat# [PS100001], Left lane) or pCMV6-ENTRY CNDP1 (Cat# RC210312, Right lane) cDNA for 48 hrs and lysed. Equivalent amounts of cell lysates (5 ug per lane) were separated by SDS-PAGE and immunoblotted with anti-CNDP1 (Cat# [TA500448]). Positive lysates [LY403189] (100ug) and [LC403189] (20ug) can be purchased separately from OriGene.



Western blot validation of overexpression lysate (Cat# [LY403189]) using anti-DDK antibody (Cat# [TA50011-100]). Left: Cell lysates from untransfected HEK293T cells; Right: Cell lysates from HEK293T cells transfected with RC210312 using transfection reagent MegaTran 2.0 (Cat# [TT210002]).



Coomassie blue staining of purified CNDP1 protein (Cat# [TP310312]). The protein was produced from HEK293T cells transfected with CNDP1 cDNA clone (Cat# RC210312) using MegaTran 2.0 (Cat# [TT210002]).