

Product datasheet for RC210308

PI 3 Kinase regulatory subunit 4 (PIK3R4) (NM_014602) Human Tagged ORF Clone

Product data:

Product Type:	Expression Plasmids
Product Name:	PI 3 Kinase regulatory subunit 4 (PIK3R4) (NM_014602) Human Tagged ORF Clone
Tag:	Myc-DDK
Symbol:	PI 3 Kinase regulatory subunit 4
Synonyms:	p150; VPS15
Mammalian Cell Selection:	Neomycin
Vector:	pCMV6-Entry (PS100001)
E. coli Selection:	Kanamycin (25 ug/mL)
ORF Nucleotide Sequence:	>RC210308 ORF sequence Red=Cloning site Blue=ORF Green=Tags(s)

TTTTGTAATACGACTCACTATAGGGCGGCCGGAATTCGTCGACTGGATCCGGTACCGAGGAGATCTGCCGCCCGATCGCC

ATGGGAAATCAGCTTGGCATTGCTCCCTCCCAGATCCTTTCTGTAGAGAGTTATTTTCAGATATTC
ATGACTTTGAATATGATAAAAGCCTGGGGAGTACTCGGTTTTTAAAGTTGCTCGAGCCAAGCACCAGAGA
AGGCTGGTCTGTGAAGGTTTTGCAATTCAGGATCCACATTGCCTTAACCAGCTATAAACAAGAG
CTGGAGGAACTGAAAATCAGGCTAATTCTGCACAGAATTGTCTACCTTTCCAGAAAGCATCAGAAAAAG
CATCTGAGAAAGCAGCTATGCTCTTAGGCAGTATGTGCGAGACAATCTCTATGATCGCATCAGTACCCG
TCCATTCTGAATAACATTGAGAAGCGCTGGATTGCTTTCCAGATCCTGACAGCTGTGGACCAAGCACAC
AAATCTGGAGTTCGTCATGGGGACATCAAGACTGAGAATGTGATGGTCACCAAGTTGGAATTGGGTTCTTC
TAACTGATTTTGGCAGTTTTAAGCCCACTATCTTCCAGAAGACAACCCGGCAGATTTCAATTATTTCTT
TGACACATCACGGAGGAGAACTTGCTATATTGCTCCTGAACGTTTTGTTGATGGTGGGATGTTTGGCACT
GAGTTAGAATATATGAGAGATCCTTCAACTCCGTTGTAGACTTAAATAGCAATCAGAGAACAAGAGGAG
AGTTGAAGAGAGCAATGGACATCTTTTCCAGCAGTTGTGTGATAGCTGAGCTTTTACAGAAGGTGATACC
ATTATTTGATCTCTCAACTTTTGGCTTATAGAAATGGACATTTTTTCCCTGAACAAGTGCTAAATAAAA
ATTGAAGATCACAGTATCAGAGAATTGGTAACCTCAGATGATTCACCGTGAGCCAGATAAAGCTTTAGAGG
CAGAAGATTACTTAAAACAGCAGCGTGGCAATGCCTTTTCCGAAATATTTTACACTTTTCTCAGCCCTA
CATGGCCCAAGTTTCCAAGGAAACGTTTCTTTCTGCAGATGAGCGTATTCTGTTATACGGAAGGATTTG
GGCAACATTATTCACAATCTCTGTGGACATGATCTGCCAGAAAAAGCCGAAGGAGAGCCTAAGGAAAATG
GGCTGGTTATCTTGGTATCTGTTATAACATCCTGCCTACAGACCCTTAAATACTGTGATTCCAAACTAGC
TGCTTTGGAAGTATTCTTCAATTTGGCTCCAAGATTAAGTGTGAAATCCTTTTGGATCGTATTACTCCA
TATCTTTTGCATTTACAGCAATGACTCTGTTCTAGGGTGAAGCCTTGAGGACGTTGACCAAAG
TTCTTGCTCTCGTCAAAGAGGTTCTCGTAATGATATCAATATTTATCCGGAATACATTCTGCCAGGCAT
AGCCCACTAGCCCAAGATGATGCTACTATCGTTAGACTAGCCTATGCTGAAAACATAGCTCTGCTGGCA



[View online »](#)

GAAACAGCTCTGAGATTCCTGGAATTAGTACAGTTAAAAATCTTAATATGGAAAATGACCCAAT AATG
AAGAAATAGATGAGGTTACACATCCAAATGGAATTTATGACACAGAGCTCCAAGCCTTACATGAAATGGT
CCAGCAGAAAGTTGTTACTTTGCTAAGTGACCTGAAAAATATTGTAAAACAAACCTTGATGGAAAATGGA
ATAACACGGCTGTGTGATTCTTTGGACGTGAGAAAGCCAACGATGTTTTGTTGTCCCACATGATTACTT
TCCTAAATGATAAGAATGATTGGCATCTACGTGGAGCATTTTTGATAGTATAGTTGGTGTGCTGCCTA
TGTTGGCTGGCAAAGCTCCTCAATCTCAAGCCTCTGCTGCAACAAGGTCTTAGTGATGCTGAGGAATTT
GTCATTTGAAAAGCTCTTTATGCCCTTACTTGTATGTGCCAGTTAGGACTGCTACAAAAACCCCATGTTT
ACGAATTTGCCAGTGATATTGCCCTTCTGTGTCATCCAATTTATGGATACGTTATGGTGCCTGGG
ATTTATCACAGTGGTAGCTCGTCAAATAAGTACAGCTGATGTCTACTGTAAGTACTGATGCCTTATCTTGAC
CCATATATTACCCAACCAATAATACAGATTGAAAGAAAACCTTGTCTGCTCAGTGTTTTAAAGGAACCGAG
TAAGTCGTTCTATATTTGATTATGCTTTGAGGTCTAAAGATTTACTAGCTTGTTCAGACATCTTCACAT
GCGTCAGAAGAAACGAAATGGTTCTCTCCGACTGCCCTCCGCCAGAGGATCCTGCCATAGCACAGCTT
CTGAAGAAGTTGCTCTCACAGGGAATGACAGAGGAAGAGGAAGACAAACTTCTGGCACTGAAAGACTTCA
TGATGAAATCTAATAAAGCAAAGGCCAATATAGTGGACCAGGCCATCTCATGATAGTAGTCAGAAAGG
TGTAATTGACTTGGCAGCTTTAGGCATAACTGGGAGACAAGTTGATCTTGTAAAACCAACAAGAACCA
GATGACAAACGGGCCAGAAAACATGTAAAAACAAGACTCAAATGTAATGAAGAATGGAAAAGCATGTTTG
GGTCACTGGACCCACCAACATGCCACAGGCCCTACCTAAAGGGAGTGATCAGGAGGTGATTGACTGG
GAAACCTCCTCGTTCCGAGTCTCTGCTGGCATTGTGTCCCTTTGTCAACTTCTTCACAGGTTCCAGAA
GTGACAACTGTCCAAAATAAAAAACCAGTAATACCGGTTTTAAGTAGTACAATCTTACCATCCACCTATC
AGATTCGAATTACAACCTGTAAAACCTGAACTTCAAGCACTCATCCAGCAAAAAGCGGGAGCAGTGCAATGC
TGAGAGAATAGCTAAGCAGATGATGGAAAATGCTGAATGGGAGAGTAAACCACCACCCTGGATGGCGT
CCTAAAGGGCTGTTAGTTGCCCATCTTCATGAGCATAAATCTGCTGTGAATCGAATTAGAGTCTCTGATG
AACACTCACTTTTTGCAACATGTTCAAATGATGGCAGAGTAAAACTGGAACAGTCAAAAAGATGGAGGG
GAAGACCACCACTACCAGATCTATTCTTACATACAGCCGAATTGGAGGACGAGTCAAGACGCTCACATTC
TGCCAAGGCTCCCACTATTTAGCCATAGCATCTGATAATGGTGTGCTCCAGCTTCTTGAATTGAGGCTT
CTAAGCTGCCAAGTCTCCTAAAATCCATCCTCTACAAAGCAGAATTCTAGATCAGAAGGAGGACGGTTG
TGTTGTGGATATGCATCACTTCAACTCTGGAGCACAGTCTGTTCTTGCCTATGCCACTGTGAATGGCTCT
CTGGTTGGCTGGGACCTTAGGTCTTCAAGCAATGCGTGGACTTTAAAGCATGATTTAAAGTCGGCCTCA
TCACTTCTTTGCTGTGGACATCCACCAATGCTGGCTCTGCATTGGTACAAGCAGTGGTACCATGGCTTG
TTGGGACATGAGGTTCCAGTTGCCAATTTCAAGTCACTGTATCCTTCCAGGGCTCGAATCAGACGCTC
TCAATGCACCCTCTGTATCAGTCTGGGTGATTGCAGCTGTTGAGGGCAACAACGAAGTGTCCATGTGGG
ACATGGAGACTGGTGACAGAAGATTTACTCTCTGGGCCAGCAGTGCAACCACCCTTTCTGAATTACAGCC
TTCTCCTCATAGCGTCCATGGTATCTACTGTAGTCTGTCAGATGGAAATCCTATCCTACTAACAGCTGGC
TCAGATATGAAAATAAGGTTTTGGGACTTGGCTTACCCAGAAAGGTCCTATGTTGTTGCAGGAAGTACTA
GTTCCCATCTGTGTCCTACTACAGGAAAATAATTGAAGGCAGTGAAGTTGTCCAGGAAATTCAGAAATA
GCAGAAAGTAGGACCAAGTATGACACCCTCGAAGGGGCCAGAGTCCCTGCCCGTGGGACATCATGAC
ATCATCACTGATGTCGCCACATTCAGACCACACAGGGCTTCATCGTAACTGCTTCTAGAGATGGGATTG
TGAAGGTGTGAAA

ACGCGTACGCGGCCGCTCGAGCAGAACTCATCTCAGAAGAGGATCTGGCAGCAAATGATATCCTGGATT
ACAAGGATGACGACGATAAGGTTTAA

Protein Sequence: >RC210308 protein sequence
 Red=Cloning site Green=Tags(s)

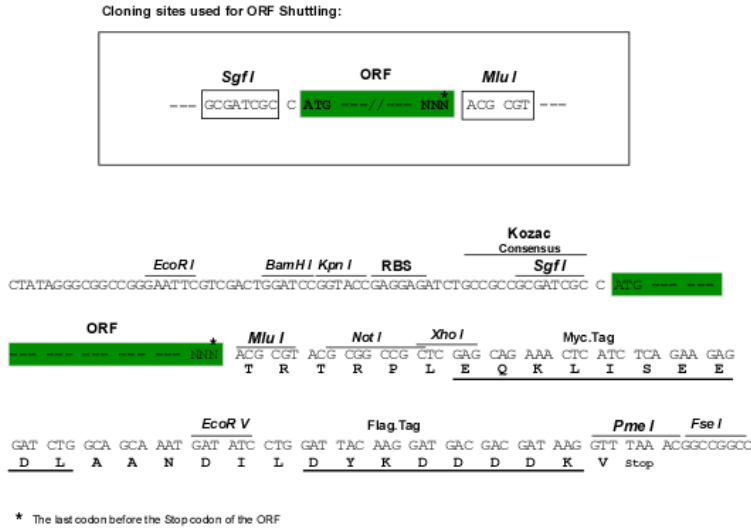
```
MGNQLAGIAPSQILSVESYFSDIHDFEYDKSLGSTRFFKVARAKHREGLVVVKVFAIQDPTLPLTSYKQE
LEELKIRLNSAQNCLPFQKASEKASEKAAMLFROYYRDNLYDRISTRPFLNNEIEKRWIAFQILTAVDQAH
KSGVVRHGDIKTENVMVTSWNWVLLTDFASFKPTYLPEDNPADFNFFDTSRRRTCYIAPERFVDGGMFAT
ELEYMRRDPSTPLVDLNSNQTRGELKRAMDIFSAGCVIAELFTEGVPLFDLSQLLAYRNGHFFPEQVLNK
IEDHSIRELVTQMIHREPKRLEAEDYLLKQQRGNAPFEIFYTFLQPMAQFAKETFLSADERILVIRKDL
GNIIHNLCGHDLPEKAEGEPKENGLVILVSVITSCLQTLKYCDSKLAALELILHLAPRLSVEILLDRITP
YLLHFSNDSVPRVRAEARLTLTKVLALVKEVPRNDINIYPEYILPGIAHLAQDDATIVRLAYAENIALLA
ETALRFLLELVQLKNLNMENDPNNEEIDEVTHPNGNYDTELQALHEMVQKVVVTLSDPENIVKQTMENG
ITRLCVFFGRQKANDVLLSHMITFLNDKNDWHLRGAFFDSIVGVAAYVWQSSSILKPLLQQGLSDAEF
VIVKALYALTCMCQGLLQKPHVYEFASDIAPFLCHPNLWIRYGAVGITVVARQISTADVYCKLMPYLD
PYITQPIIQIERKLVLLSVLKEPVSRSIFDYALRSKDITSLFRHLHMRQKKRNGSLPDCPPPEDPAIAQL
LKKLLSQGMTEEEEDKLLALKDFMMKSNKAKANIVDQSHLHDSSQKGVIDLAALGITGRQVDLVKTKQEP
DDKRARKHVQDSNVNEEWKSMFGSLDPPNMPQALPKGSDQEVITGKPPRESSAGICVPLSTSSQVPE
VTTYQNKKPVIPVLSSTILPSTYQIRITTKTELQQLIQKREQCNAERIAKQMMENAEWESKPPPPGWR
PKGLLVAHLHEHKSAVNRIRVSDHSLFATCSNDGTVKIWSQKMEGKTTTTRISILTYSRIGGRVKTFTF
CQGSHYLAIASDNGAVQLLGEASKLPKSPKIHPLQSRILDQKEDGCVVDMHFNLSGAQSVLAYATVNGS
LVGWDLRSSNAWTLKHDLKSGLITSFVAVDIHQWLCIGTSSGTMACWDMRFQLPISSHCHPSRARIRRL
SMHPLYQSWVIAAVQGNNEVSMWDMETGDRRFTLWASSAPPLSELQSPHSVHGIYCPADGNPILLTAG
SDMKIRFWDLAYPERSYVAVGSTSSPSVSYRRIIEGTEVVQEIQNKQKVGPSDDTPRRGPESLPVGHHD
IITDVATFQTTQGFIVTASRDGIVKVKK

TRTRPLEQKLISEEDLAANDILDYKDDDDKV
```

Chromatograms: https://cdn.origene.com/chromatograms/mk6585_g09.zip

Restriction Sites: SgfI-MluI

Cloning Scheme:

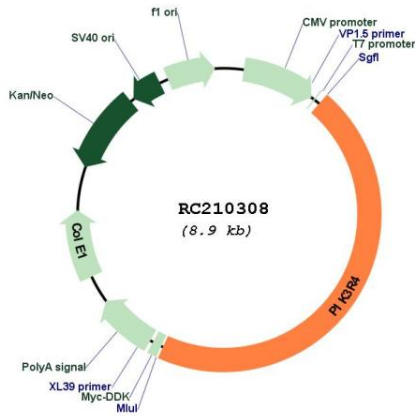


ACCN: NM_014602

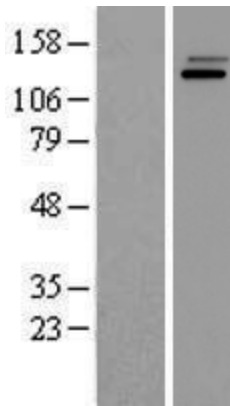
ORF Size: 4074 bp

OTI Disclaimer:	The molecular sequence of this clone aligns with the gene accession number as a point of reference only. However, individual transcript sequences of the same gene can differ through naturally occurring variations (e.g. polymorphisms), each with its own valid existence. This clone is substantially in agreement with the reference, but a complete review of all prevailing variants is recommended prior to use. More info
OTI Annotation:	This clone was engineered to express the complete ORF with an expression tag. Expression varies depending on the nature of the gene.
Components:	The ORF clone is ion-exchange column purified and shipped in a 2D barcoded Matrix tube containing 10ug of transfection-ready, dried plasmid DNA (reconstitute with 100 ul of water).
Reconstitution Method:	<ol style="list-style-type: none">1. Centrifuge at 5,000xg for 5min.2. Carefully open the tube and add 100ul of sterile water to dissolve the DNA.3. Close the tube and incubate for 10 minutes at room temperature.4. Briefly vortex the tube and then do a quick spin (less than 5000xg) to concentrate the liquid at the bottom.5. Store the suspended plasmid at -20°C. The DNA is stable for at least one year from date of shipping when stored at -20°C.
RefSeq:	NM_014602.3
RefSeq Size:	5078 bp
RefSeq ORF:	4077 bp
Locus ID:	30849
UniProt ID:	Q99570
Cytogenetics:	3q22.1
Domains:	pkinase, WD40, S_TKc
Protein Families:	Druggable Genome, Protein Kinase
Protein Pathways:	Regulation of autophagy
MW:	153.1 kDa
Gene Summary:	Regulatory subunit of the PI3K complex that mediates formation of phosphatidylinositol 3-phosphate; different complex forms are believed to play a role in multiple membrane trafficking pathways: PI3KC3-C1 is involved in initiation of autophagosomes and PI3KC3-C2 in maturation of autophagosomes and endocytosis. Involved in regulation of degradative endocytic trafficking and cytokinesis, probably in the context of PI3KC3-C2 (PubMed:20643123).[UniProtKB/Swiss-Prot Function]

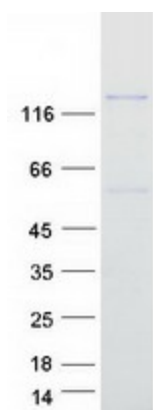
Product images:



Circular map for RC210308



Western blot validation of overexpression lysate (Cat# [LY415157]) using anti-DDK antibody (Cat# [TA50011-100]). Left: Cell lysates from untransfected HEK293T cells; Right: Cell lysates from HEK293T cells transfected with RC210308 using transfection reagent MegaTran 2.0 (Cat# [TT210002]).



Coomassie blue staining of purified PIK3R4 protein (Cat# [TP310308]). The protein was produced from HEK293T cells transfected with PIK3R4 cDNA clone (Cat# RC210308) using MegaTran 2.0 (Cat# [TT210002]).