

## Product datasheet for RC210306

### HOXC13 (NM\_017410) Human Tagged ORF Clone

#### Product data:

Product Type:	Expression Plasmids
Product Name:	HOXC13 (NM_017410) Human Tagged ORF Clone
Tag:	Myc-DDK
Symbol:	HOXC13
Synonyms:	ECTD9; HOX3; HOX3G
Mammalian Cell Selection:	Neomycin
Vector:	pCMV6-Entry (PS100001)
E. coli Selection:	Kanamycin (25 ug/mL)
ORF Nucleotide Sequence:	>RC210306 representing NM_017410 Red=Cloning site Blue=ORF Green=Tags(s)

TTTTGTAATACGACTCACTATAGGGCGGCCGGAATTCGTCGACTGGATCCGGTACCGAGGAGATCTGCC  
GCC**CGATCGC**C

ATGACGACTTCGCTGCTCCTGCATCCACGCTGGCCGGAGAGCCTTATGTACGTCTATGAGGACAGCGCGG  
CGGAGAGCGGCATCGCGCGCGCGGGAGGAGGAGCGCGGCACGGCGGAGCGGGGGTGGCTGCAG  
CGGAGCGAGCCCCGCAAAGCCCCGAGCATGGATGGTCTGGGCAGCAGCTGCCCGCCAGCCACTGCCG  
GACCTGCTTCGCACCCCGTGTGGGCCCGCCCGGCTCCCCTGGCGCCCTCAGGGCGCGTCTATA  
CGGACATCCCGGCCCGGAGGCGCGCCAGTGTGCCCGCCCGCCGACCCCCACCTCGTCCAGCGC  
CACCTGGGTACGGTACCCCTTCGGGGCAGCTACTACGGTCCCGCTGTCGACAACGTGAACCTG  
CAGCAGAAGCCTTGCCTACCACCCGGCGATAAATACCGGAGCCGTCGGGCGCCCTGCCCGGTGACG  
ACCTGTCTCTAGGGCAAGGAGTTCGCTTCTACCCAGCTTCGCCAGCTCCTACCAGGCGATGCCCGG  
CTACCTGGACGTGTCGGTGGTGCCTGGGATCAGCGGGCACCCGGAGCCGTCACGACGCCCTATCCCC  
GTCGAAGGCTACCAGCACTGGGCTCTCCAATGGCTGGGACAGTCAGGTGTACTGCTCCAAGGAGCAGT  
CGCAGTCCGCCACCTCTGGAAGTCTCCCTCCAGACGTGGTCCCCTGCAGCCGAGGTGAGCAGCTA  
CCGGCGCGGGCGCAAGAAACGCTGCCCTACACTAAGGTGCAGCTGAAGGAGCTAGAGAAGGAATACGG  
GCTAGCAAAGTTCATCACCAAAGAGAAGCGCCGGCGCATCTCCGCCACCACGAACCTCTGAGCGCCAGG  
TAACCATCTGGTCCAGAACCGGCGGGTCAAAGAGAAGAAGGTGGTCAGCAAATCGAAAGCGCCTCATCT  
CCACTCCACC

AG**CGGACCG**ACGCGTACGCGGCCGCTCGAGCAGAACTCATCTCAGAAGAGGATCTGGCAGCAAATGATATCC  
TGGATTACAAGGATGACGACGATAAGGTTTAA



[View online »](#)

**Protein Sequence:** >RC210306 representing NM\_017410  
Red=Cloning site Green=Tags(s)

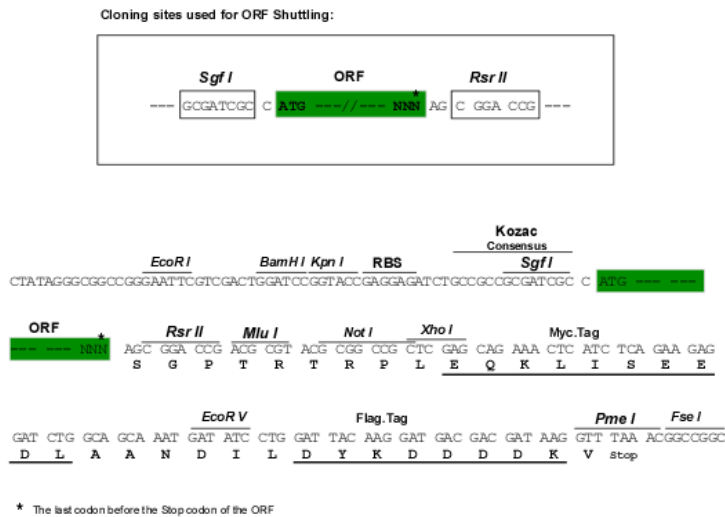
MTTSLLLHPRWPESLMYVYEDSAAESGIGGGGGGGGGTGGAGGGCSGASPGKAPSM DGLGSSCPASHCR  
 DLLPHPVLGRPPAPL GAPQGA VYTDIPAPEAARQCAPPAPPTSSSATLGYGYPFGGSYYGCRLSHNVNL  
 QQKPCAYHPGDKYPEPSGALPGDDLSSRAKEFAFYPSFASSYQAMPGYLDVSVVPGISGHPEPRHDALIP  
 VEGYQHWAL SNGWDSQVYCSKEQSQAHLWKSFPDPVVPLQPEVSSYRRGRKRVPYTKVQLKELEKEYA  
 ASKFITKEKRRRISATTNLSERQVTIWFQNRVKEKVVSKSKAPHLHST

SGPTRTRRLEQKLI SEEDLAANDILDYKDDDDKV

**Chromatograms:** [https://cdn.origene.com/chromatograms/mk8114\\_d11.zip](https://cdn.origene.com/chromatograms/mk8114_d11.zip)

**Restriction Sites:** SgfI-RsrII

**Cloning Scheme:**



**ACCN:** NM\_017410

**ORF Size:** 990 bp

**OTI Disclaimer:** The molecular sequence of this clone aligns with the gene accession number as a point of reference only. However, individual transcript sequences of the same gene can differ through naturally occurring variations (e.g. polymorphisms), each with its own valid existence. This clone is substantially in agreement with the reference, but a complete review of all prevailing variants is recommended prior to use. [More info](#)

**OTI Annotation:** This clone was engineered to express the complete ORF with an expression tag. Expression varies depending on the nature of the gene.

**Components:** The ORF clone is ion-exchange column purified and shipped in a 2D barcoded Matrix tube containing 10ug of transfection-ready, dried plasmid DNA (reconstitute with 100 ul of water).

**Reconstitution Method:**

1. Centrifuge at 5,000xg for 5min.
2. Carefully open the tube and add 100ul of sterile water to dissolve the DNA.
3. Close the tube and incubate for 10 minutes at room temperature.
4. Briefly vortex the tube and then do a quick spin (less than 5000xg) to concentrate the liquid at the bottom.
5. Store the suspended plasmid at -20°C. The DNA is stable for at least one year from date of shipping when stored at -20°C.

**RefSeq:** [NM\\_017410.3](#)

**RefSeq Size:** 2435 bp

**RefSeq ORF:** 993 bp

**Locus ID:** 3229

**UniProt ID:** [P31276](#)

**Cytogenetics:** 12q13.13

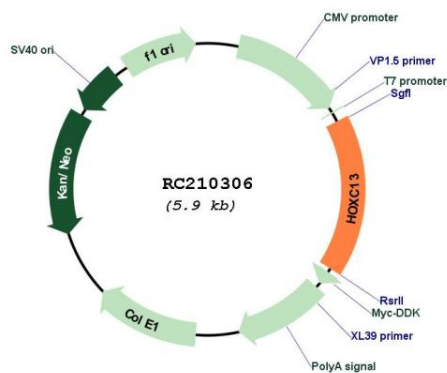
**Domains:** homeobox

**Protein Families:** Druggable Genome, ES Cell Differentiation/IPS, Transcription Factors

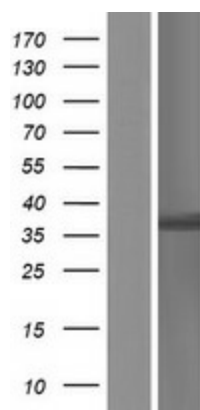
**MW:** 35.2 kDa

**Gene Summary:** This gene belongs to the homeobox family of genes. The homeobox genes encode a highly conserved family of transcription factors that play an important role in morphogenesis in all multicellular organisms. Mammals possess four similar homeobox gene clusters, HOXA, HOXB, HOXC and HOXD, which are located on different chromosomes and consist of 9 to 11 genes arranged in tandem. This gene is one of several homeobox HOXC genes located in a cluster on chromosome 12. The product of this gene may play a role in the development of hair, nail, and filiform papilla. [provided by RefSeq, Jul 2008]

## Product images:



Circular map for RC210306



Western blot validation of overexpression lysate (Cat# [LY413805]) using anti-DDK antibody (Cat# [TA50011-100]). Left: Cell lysates from untransfected HEK293T cells; Right: Cell lysates from HEK293T cells transfected with RC210306 using transfection reagent MegaTran 2.0 (Cat# [TT210002]).