

Product datasheet for **RC210295**

Carboxypeptidase Z (CPZ) (NM_001014448) Human Tagged ORF Clone

Product data:

Product Type:	Expression Plasmids
Product Name:	Carboxypeptidase Z (CPZ) (NM_001014448) Human Tagged ORF Clone
Tag:	Myc-DDK
Symbol:	Carboxypeptidase Z
Mammalian Cell Selection:	Neomycin
Vector:	pCMV6-Entry (PS100001)
E. coli Selection:	Kanamycin (25 ug/mL)



[View online »](#)

**ORF Nucleotide
Sequence:**

>RC210295 ORF sequence
 Red=Cloning site Blue=ORF Green=Tags(s)

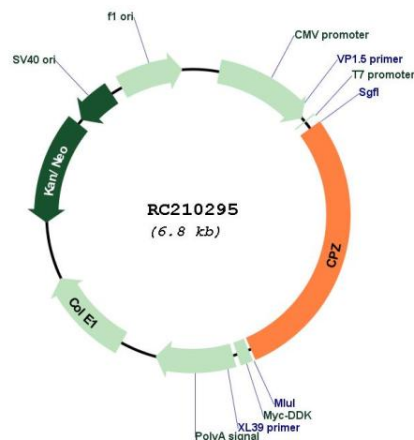
TTTTGTAATACGACTCACTATAGGGCGGCCGGGAATTCGTCGACTGGATCCGGTACCGAGGAGATCTGCC
 GCC**GCGATCGCC**

ATGCCGCCCCCGCCCGCTGCTCCTTACAGTCTGGTCTGCGCCGCTGCCGCGGGGTGCGAGT
 TTGAGCGGAACCCCGCCGGTGAATGCCACAGGCCACCAGCTGCAGACAGCGCCACCTGCGTGGACCTGCA
 GCTCAGGACCTGCAGCGATGCCGCTACAACCACACCACCTTCCCCAACCTGCTTCAGCACCGGTGCTGG
 GAGGTGGTGGAGGCCAGCTCCGAGTACATCCTGCTGAGCGTTCTACACCAGCTCCTGGAAGGCCAGTGCA
 ACCCGGACCTGCGGCTGCTGGGCTGTGCTGTGCTGGCCCCCGGTGTGAGGGCGGCTGGGTGCGCAGACC
 CTGCCGGCACATCTGCGAGGGCCTGCGGGAGGTCTGCCAGCCCGCCTTCGACGCCATTGACATGGCCTGG
 CCCTACTTCTTGACTGCCACCGCTACTTCACGAGAGAGGACGAGGGCTGCTATGACCCGCTGGAGAAGC
 TTCGGGGAGGCCGAGGCTGACGAGGCACTGCCCTCAGGGCTGCCGCCACCTTCATCCGCTTCAGCCA
 CCACTCCTACGCCAGATGGTGCCTGTGCTGAGGCGGACGGCCTCCCGCTGCGCCACGTTGCCAGGACC
 TACAGCATCGGGCGCAGCTTCGACGGCAGGAGCTGCTGGTTCATCGAGTTCTCCAGCCGCCCGGCCAGC
 ACGAGCTGATGGAGCCCAGGTGAAGTTCATCGGCAACATTCATGGCAACGAGGTGGCGGGCCGGGAGAT
 GCTCATCTACCTAGCCCAGTACCTGTGCTCTGAGTACCTGCTTGGTAACCCCGCATCCAGCGCCTGCTC
 AACACCACCCGCATCCACCTGCTGCCCTCCATGAACCCTGACGGCTATGAGGTGGCAGCTGCCGAGGGTG
 CCGGCTACAACGGGTGGACGAGCGGGAGGCAGAACCGGCAGAACCTGGATCTGAACCGAAATTTCCCGGA
 CCTGACGTCAGTACTACCGGCTGGCGGAGACCCGCGGCACGCAGCGACCATCCCCATCCCCAG
 CACTACTGGTGGGTAAAGTGGCCCCGAGACAAAGCAATCATGAAGTGGATGCAGACCATACCCCTTGG
 TGCTCTCAGCCAGCCTTCATGGGGCGACCTGGTGGTGTCTACCCCTTCGACTTCTCAAGCACCCCCA
 GGAGGAGAAGATGTTTTCTCCACGCCCGACGAGAAGATGTTCAAGCTGCTGTCCAGAGCCTACGCTGAC
 GTCCACCCCATGATGATGGACAGGTGCGAGAATAGGTGTGGAGGCAATTCCTGAAGAGGGGGAGCATCA
 TCAACGGGGCGGACTGGTACAGCTTCACGGGAGGCATGTCCGACTTCAACTACCTGCACACCAACTGCTT
 TGAGATCACGGTAGAGCTGGGCTGTGTGAAGTTCACCCCGAGGAGGCCCTGTACACACTCTGCCAGCAC
 AACAGGAGTCACTCCTGAATTCGTGGAGACGGTGCACCGGGGCATCAAAGGTGTGGTACAGATAAAT
 TCGGCAAGCCAGTCAAAAACGCCCGGATCTCAGTCAAAGGCATTCGCCACGACATCACCACAGCCCCAGA
 TGGTACTACTGGAGACTGCTGCCCCAGGTATCCACATTGCTCATTGCCAAGCCCTGGCTACGCCAAA
 GTCATCAAGAAAGTCATCATCCCCGCCGATGAAGAGGGCTGGCCGTGTGGACTTCACTTCTGCAACCTC
 TGGGGATGGGACCAAGAACTTTATTATGGGCTGCGGAGGACTGGGCCACGACCCGCTGGGAGGTGC
 CAGCTCTTTGGGGAGGCCACGGAGCCCGACCCGCTCCGGGCGCGCAGGACGCCCTCGGCCGACGGGAGT
 AAGCCCTGGTGGTGGTCTACTTACATCGCTGAGCACCCACAGGCCACGCTGGCTGCTCAAGTAC

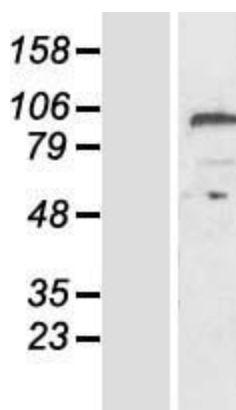
ACGCGTACGCGGCCGCTCGAGCAGAACTCATCTCAGAAGAGGATCTGGCAGCAATGATATCCTGGATT
 ACAAGGATGACGACGATAAGGTTTAA

Components:	The ORF clone is ion-exchange column purified and shipped in a 2D barcoded Matrix tube containing 10ug of transfection-ready, dried plasmid DNA (reconstitute with 100 ul of water).
Reconstitution Method:	<ol style="list-style-type: none">1. Centrifuge at 5,000xg for 5min.2. Carefully open the tube and add 100ul of sterile water to dissolve the DNA.3. Close the tube and incubate for 10 minutes at room temperature.4. Briefly vortex the tube and then do a quick spin (less than 5000xg) to concentrate the liquid at the bottom.5. Store the suspended plasmid at -20°C. The DNA is stable for at least one year from date of shipping when stored at -20°C.
RefSeq Size:	2555 bp
RefSeq ORF:	1548 bp
Locus ID:	8532
UniProt ID:	Q66K79
Cytogenetics:	4p16.1
Protein Families:	Druggable Genome, Protease, Secreted Protein
MW:	73.6 kDa
Gene Summary:	This gene encodes a member of the metallo-carboxypeptidase family. This enzyme displays carboxypeptidase activity towards substrates with basic C-terminal residues. It is most active at neutral pH and is inhibited by active site-directed inhibitors of metallo-carboxypeptidases. Alternative splicing in the coding region results in multiple transcript variants encoding different isoforms. [provided by RefSeq, Jul 2008]

Product images:



Circular map for RC210295



Western blot validation of overexpression lysate (Cat# [LY423071]) using anti-DDK antibody (Cat# [TA50011-100]). Left: Cell lysates from untransfected HEK293T cells; Right: Cell lysates from HEK293T cells transfected with RC210295 using transfection reagent MegaTran 2.0 (Cat# [TT210002]).