

Product datasheet for RC210291

Myelin Basic Protein (MBP) (NM_001025092) Human Tagged ORF Clone

Product data:

Product Type: Expression Plasmids
Product Name: Myelin Basic Protein (MBP) (NM_001025092) Human Tagged ORF Clone
Tag: Myc-DDK
Symbol: Myelin Basic Protein
Mammalian Cell Selection: Neomycin
Vector: pCMV6-Entry (PS100001)
E. coli Selection: Kanamycin (25 ug/mL)
ORF Nucleotide Sequence: >RC210291 ORF sequence
 Red=Cloning site Blue=ORF Green=Tags(s)

TTTTGTAATACGACTCACTATAGGGCGGCCGGGAATTCGTCGACTGGATCCGGTACCGAGGAGATCTGCC
 GCC**CGATCGCC**

ATGGCGTCACAGAAGAGACCCTCCCAGAGGCACGGATCCAAGTACCTGGCCACAGCAAGTACCATGGACC
 ATGCCAGGCATGGCTTCTCCCAAGGCACAGAGACACGGGCATCCTTGACTCCATCGGGCGCTTCTTTGG
 CGGTGACAGGGGTGCGCCCAAGCGGGGCTCTGGCAAGGACTCACACCACCCGGCAAGAAGTCTCAAGTAC
 GGCTCCCTGCCCCAGAAGTACACCGCCCGACCAAGATGAAAACCCCGTAGTCCACTTCTCAAGAACA
 TTGTGACGCCTCGCACACCACCCCGTCGCAGGGAAAGGGGCCGAAGGCCAGAGACCAGGATTTGGCTA
 CGGAGGCAGAGCGTCCGACTATAAATCGGCTCACAAGGGATTCAAGGGAGTTCGATGCCACGGCACGCTT
 TCCAAAATTTTTAAGCTGGGAGGAAGAGATAGTCGCTCTGGATCACCCATGGCTAGACGC

ACGCGTACGCGGCCGCTCGAGCAGAACTCATCTCAGAAGAGGATCTGGCAGCAATGATATCCTGGATT
 ACAAGGATGACGACGATAAGGTTTAA

Protein Sequence: >RC210291 protein sequence
 Red=Cloning site Green=Tags(s)
 MASQKRPSQRHGSKYLATASTMDHARHGFLPRHRDTGILDSIGRFFGGDRGAPKRGSGKDSHHPARTAHY
 GSLPQKSHGRQTQDENPVVHFFKNIIVTPRTPPPSQKGAEGQRPFGYGGRASDYKSAHKGFKGVDAQTL
 SKIFKLGGRDSRSGSPMARR

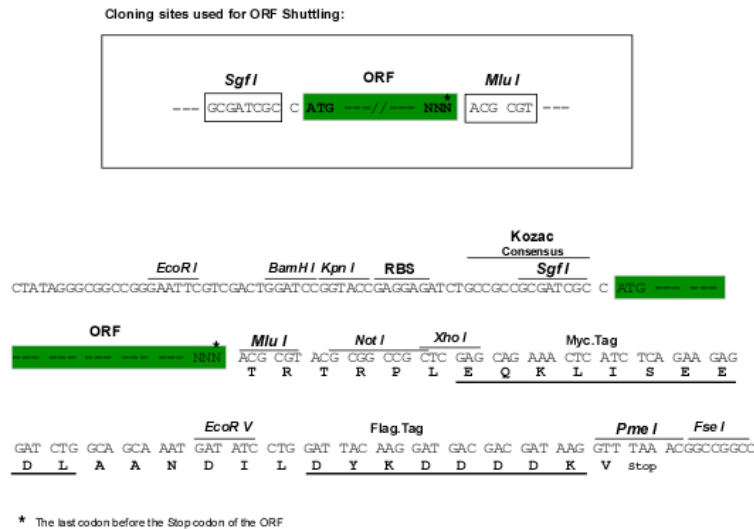
TRTRPLEQKLISEEDLAANDILDYKDDDDKV

Chromatograms: https://cdn.origene.com/chromatograms/mk6546_e01.zip

Restriction Sites: SgfI-MluI



[View online »](#)

Cloning Scheme:


ACCN: NM_001025092

ORF Size: 480 bp

OTI Disclaimer: The molecular sequence of this clone aligns with the gene accession number as a point of reference only. However, individual transcript sequences of the same gene can differ through naturally occurring variations (e.g. polymorphisms), each with its own valid existence. This clone is substantially in agreement with the reference, but a complete review of all prevailing variants is recommended prior to use. [More info](#)

OTI Annotation: This clone was engineered to express the complete ORF with an expression tag. Expression varies depending on the nature of the gene.

Components: The ORF clone is ion-exchange column purified and shipped in a 2D barcoded Matrix tube containing 10ug of transfection-ready, dried plasmid DNA (reconstitute with 100 ul of water).

Reconstitution Method:

1. Centrifuge at 5,000xg for 5min.
2. Carefully open the tube and add 100ul of sterile water to dissolve the DNA.
3. Close the tube and incubate for 10 minutes at room temperature.
4. Briefly vortex the tube and then do a quick spin (less than 5000xg) to concentrate the liquid at the bottom.
5. Store the suspended plasmid at -20°C. The DNA is stable for at least one year from date of shipping when stored at -20°C.

RefSeq: [NM_001025092.2](#)

RefSeq Size: 2189 bp

RefSeq ORF: 483 bp

Locus ID: 4155

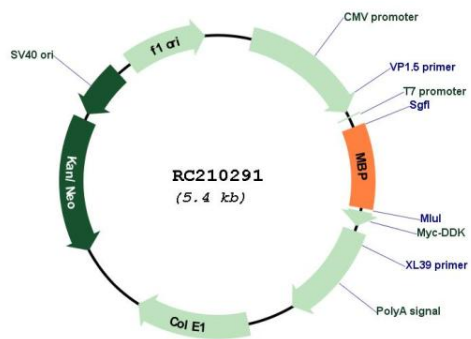
UniProt ID: [P02686](#)

Cytogenetics: 18q23

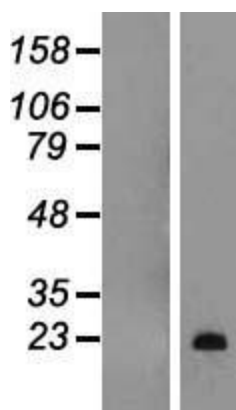
MW: 17.3 kDa

Gene Summary: The protein encoded by the classic MBP gene is a major constituent of the myelin sheath of oligodendrocytes and Schwann cells in the nervous system. However, MBP-related transcripts are also present in the bone marrow and the immune system. These mRNAs arise from the long MBP gene (otherwise called "Golli-MBP") that contains 3 additional exons located upstream of the classic MBP exons. Alternative splicing from the Golli and the MBP transcription start sites gives rise to 2 sets of MBP-related transcripts and gene products. The Golli mRNAs contain 3 exons unique to Golli-MBP, spliced in-frame to 1 or more MBP exons. They encode hybrid proteins that have N-terminal Golli aa sequence linked to MBP aa sequence. The second family of transcripts contain only MBP exons and produce the well characterized myelin basic proteins. This complex gene structure is conserved among species suggesting that the MBP transcription unit is an integral part of the Golli transcription unit and that this arrangement is important for the function and/or regulation of these genes. [provided by RefSeq, Jul 2008]

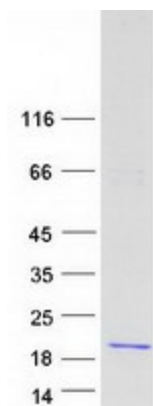
Product images:



Circular map for RC210291



Western blot validation of overexpression lysate (Cat# [LY422584]) using anti-DDK antibody (Cat# [TA50011-100]). Left: Cell lysates from untransfected HEK293T cells; Right: Cell lysates from HEK293T cells transfected with RC210291 using transfection reagent MegaTran 2.0 (Cat# [TT210002]).



Coomassie blue staining of purified MBP protein (Cat# [TP310291]). The protein was produced from HEK293T cells transfected with MBP cDNA clone (Cat# RC210291) using MegaTran 2.0 (Cat# [TT210002]).