

## Product datasheet for **RC210289**

### GMFG (NM\_004877) Human Tagged ORF Clone

#### Product data:

**Product Type:** Expression Plasmids  
**Product Name:** GMFG (NM\_004877) Human Tagged ORF Clone  
**Tag:** Myc-DDK  
**Symbol:** GMFG  
**Synonyms:** GMF-GAMMA  
**Mammalian Cell Selection:** Neomycin  
**Vector:** pCMV6-Entry (PS100001)  
**E. coli Selection:** Kanamycin (25 ug/mL)  
**ORF Nucleotide Sequence:** >RC210289 representing NM\_004877  
Red=Cloning site Blue=ORF Green=Tags(s)

TTTTGTAATACGACTCACTATAGGGCGCCGGGAATTCGTCGACTGGATCCGGTACCGAGGAGATCTGCC  
GCC**CGATCGCC**

ATGTCTGACTCCCTGGTGGTGTGCGAGGTAGACCCAGAGCTAACAGAAAAGCTGAGGAAATTCGGCTTCC  
GAAAAGAGACAGACAATGCAGCCATCATAATGAAGGTGGACAAAGACCGGCAGATGGTGGTCTGGAGGA  
AGAATTTCAGAACATTTCCCGAGGAGCTCAAATGGAGTTGCCGAGAGACAGCCAGGTTCTGTGTT  
TACAGTACAAGTACGTGCATGACGATGGCCGAGTGTCTACCTTTGTGTTTCATCTTCTCCAGCCCTG  
TGGGCTGCAAGCCGGAACAACAGATGATGTATGCAGGGAGTAAAAACAGGCTGGTGCAGACAGCAGAGCT  
CACAAAGGTGTTGAAATCCGCACCACTGATGACCTCACTGAGGCTGGCTCCAAGAAAAGTTGTCTTTC  
TTTCGT

**ACGCGT**ACGCGGCCGCTCGAGCAGAACTCATCTCAGAAGAGGATCTGGCAGCAAATGATATCCTGGATT  
ACAAGGATGACGACGATAAGGTTTAA

**Protein Sequence:** >RC210289 representing NM\_004877  
Red=Cloning site Green=Tags(s)

MSDSL VVCEVDPEL TEKLRKFRFRKETDNAAIIMKVDRQMVVLEEEFQNISPEELKME LPERQPRFVV  
YSYKYVHDDGRVSYPLCFIFSSPVGCKPEQMMYAGSKNRLVQT AELTKVFEIRTTDDL TEAWLQEKL SFR

**TRTRPLEQKLISEEDLAANDILDYKDDDDKV**

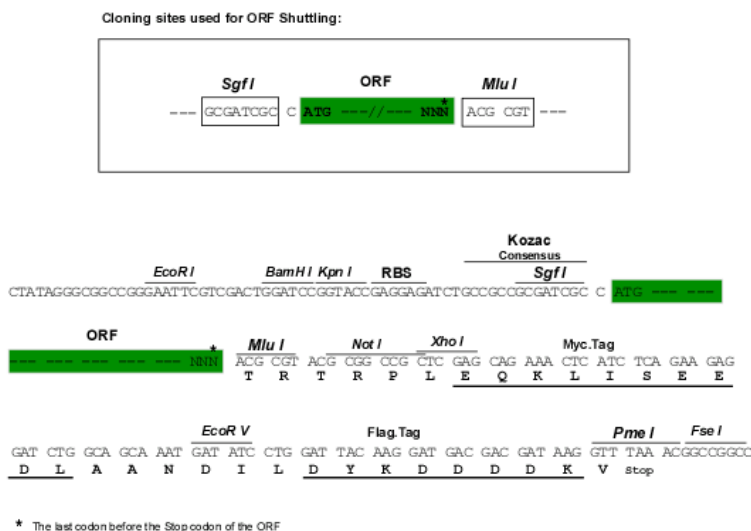
**Chromatograms:** [https://cdn.origene.com/chromatograms/mg2615\\_a01.zip](https://cdn.origene.com/chromatograms/mg2615_a01.zip)



[View online >](#)

Restriction Sites: SgfI-MluI

Cloning Scheme:



ACCN: NM\_004877

ORF Size: 426 bp

OTI Disclaimer: The molecular sequence of this clone aligns with the gene accession number as a point of reference only. However, individual transcript sequences of the same gene can differ through naturally occurring variations (e.g. polymorphisms), each with its own valid existence. This clone is substantially in agreement with the reference, but a complete review of all prevailing variants is recommended prior to use. [More info](#)

OTI Annotation: This clone was engineered to express the complete ORF with an expression tag. Expression varies depending on the nature of the gene.

Components: The ORF clone is ion-exchange column purified and shipped in a 2D barcoded Matrix tube containing 10ug of transfection-ready, dried plasmid DNA (reconstitute with 100 ul of water).

Reconstitution Method:

1. Centrifuge at 5,000xg for 5min.
2. Carefully open the tube and add 100ul of sterile water to dissolve the DNA.
3. Close the tube and incubate for 10 minutes at room temperature.
4. Briefly vortex the tube and then do a quick spin (less than 5000xg) to concentrate the liquid at the bottom.
5. Store the suspended plasmid at -20°C. The DNA is stable for at least one year from date of shipping when stored at -20°C.

RefSeq: [NM\\_004877.4](#)

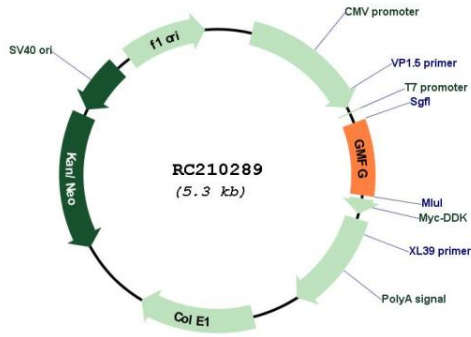
RefSeq Size: 561 bp

RefSeq ORF: 429 bp

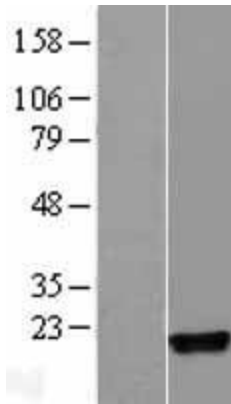
Locus ID: 9535

UniProt ID: [O60234](#)  
 Cytogenetics: 19q13.2  
 Domains: ADF  
 MW: 16.6 kDa

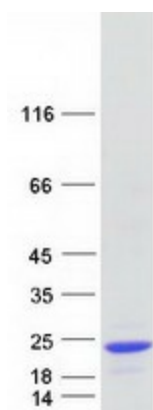
**Product images:**



Circular map for RC210289



Western blot validation of overexpression lysate (Cat# [LY401523]) using anti-DDK antibody (Cat# [TA50011-100]). Left: Cell lysates from untransfected HEK293T cells; Right: Cell lysates from HEK293T cells transfected with RC210289 using transfection reagent MegaTran 2.0 (Cat# [TT210002]).



Coomassie blue staining of purified GMFG protein (Cat# [TP310289]). The protein was produced from HEK293T cells transfected with GMFG cDNA clone (Cat# RC210289) using MegaTran 2.0 (Cat# [TT210002]).