

## Product datasheet for **RC210284**

### G2A (GPR132) (NM\_013345) Human Tagged ORF Clone

#### Product data:

Product Type:	Expression Plasmids
Product Name:	G2A (GPR132) (NM_013345) Human Tagged ORF Clone
Tag:	Myc-DDK
Symbol:	G2A
Synonyms:	G2A
Mammalian Cell Selection:	Neomycin
Vector:	pCMV6-Entry (PS100001)
E. coli Selection:	Kanamycin (25 ug/mL)
ORF Nucleotide Sequence:	>RC210284 ORF sequence Red=Cloning site Blue=ORF Green=Tags(s)

TTTTGTAATACGACTCACTATAGGGCGCCGGGAATTCGTCGACTGGATCCGGTACCGAGGAGATCTGCC  
GCC**CGATCGCC**

ATGTGCCCAATGCTACTGAAAAACGGTTACAATGGAAACGCCACCCAGTGACCACCACTGCCCGTGGG  
CCTCCCTGGGCTCTCCGCCAAGACCTGCAACAACGTGTCCTTCGAAGAGAGCAGGATAGTCCTGGTCGT  
GGTGTACAGCGCGGTGTGCACGCTGGGGGTGCCGCCAACTGCCTGACTGCGTGGCTGGCGCTGCTGCAG  
GTACTGCAGGGCAACGTGCTGGCCGTCTACCTGCTCTGCCTGGCACTCTGCGAGCTGCTGTACACAGGCA  
CGCTGCCACTCTGGTCACTATATCCGCAACCAGCACCCTGGACCCTAGGCCTGCTGGCCTGCAAGGT  
GACCGCTACATCTTCTTCTGCAACATCTACGTACGATCCTCTTCTGTGCTGCATCTCCTGCGACCGC  
TTCGTGGCCGTGGTGTACGCGCTGGAGAGTCGGGGCCGCCGCCGGAGGACCGCCATCCTCATCTCCG  
CCTGCATCTTATCCTCGTGGGATCGTTCACTACCCGGTGTTCAGACGGAAGACAAGGAGACCTGCTT  
TGACATGCTGCAGATGGACAGCAGGATTGCCGGTACTACTACGCCAGGTTACCCGTTGGCTTTGCCATC  
CCTCTCTCCATCATCGCCTTACCAACCACCGGATTTTCAGGAGCATCAAGCAGAGCATGGGCTTAAGCG  
CTGCCAGAAGGCCAAGGTGAAGCACTCGGCCATCGCGGTGGTTGTCATCTTCTAGTCTGCTTCGCCCC  
GTACCACCTGGTTCTCCTCGTCAAAGCCGCTGCCTTTTCTACTACAGAGGAGACAGGAACGCCATGTGC  
GGCTTGGAGGAAAGGCTGTACACAGCCTCTGTGGTGTTCGTGCTGTCCACGGTGAACGGCGTGGCTG  
ACCCCATCTACGTGCTGGCCACGGACATTCCCGCCAAGAAGTGTCCAGAATCCATAAGGGGTGGAA  
AGAGTGGTCCATGAAGACAGACGTACCCAGGCTACCCACAGCAGGGACACCGAGGAGCTGCAGTCGCC  
GTGGCCCTTGAGACCACTACACCTTCTCCAGGCCGTGCACCCACCAGGCTACCATGCCTGCAAAGA  
GGCTGATTGAGGAGTCCTGC

**ACGCGT**ACGCGGCCGCTCGAGCAGAACTCATCTCAGAAGAGGATCTGGCAGCAAATGATATCCTGGATT  
ACAAGGATGACGACGATAAGGTTTAA



[View online >](#)

**Protein Sequence:** >RC210284 protein sequence  
Red=Cloning site Green=Tags(s)

MCPMLLKNGYNGNATPVTTTAPWASLGLSAKTCNNVSFEESRIVLVVVYSAVCTLGVPANCLTAWLALLQ  
 VLQGNVLAVYLLCLALCELLYTGTLPWVIYIRNQHRWTLGLLACKVTAYIFFCNIYVSILFLCCISCDR  
 FVAVVYALESRGRRRRRTAILISACIFILVGIHVYPVFQTEDKETCFDMLQMSRIAGYYYARFTVGF  
 PLSSIIAFTNHRIFRSIKQSMGLSAAQKAKVKHSAIAVVVIFLVCFAPYHLVLLVKAAAFSYRGRNAMC  
 GLEERLYTASVVFLLCLSTVNGVADPIIYVLATDHSRQEVSRHKGWKEWSMKTDVTRLTHSRDTEELQSP  
 VALADHYTFSRPVHPPGSPCPAKRLIEESC

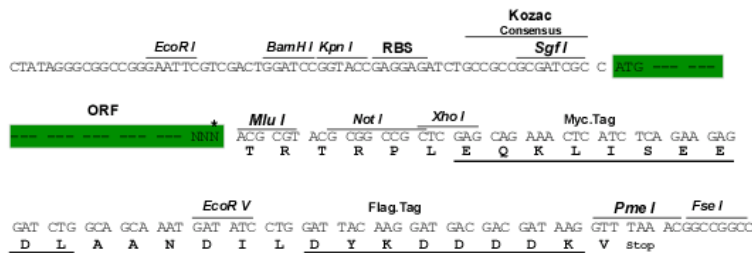
TRTRPLEQKLISEEDLAANDILDYKDDDDKV

**Chromatograms:** [https://cdn.origene.com/chromatograms/mk6765\\_h07.zip](https://cdn.origene.com/chromatograms/mk6765_h07.zip)

**Restriction Sites:** SgfI-MluI

**Cloning Scheme:**

Cloning sites used for ORF Shuttling:



\* The last codon before the Stop codon of the ORF

**ACCN:** NM\_013345

**ORF Size:** 1140 bp

**OTI Disclaimer:** The molecular sequence of this clone aligns with the gene accession number as a point of reference only. However, individual transcript sequences of the same gene can differ through naturally occurring variations (e.g. polymorphisms), each with its own valid existence. This clone is substantially in agreement with the reference, but a complete review of all prevailing variants is recommended prior to use. [More info](#)

**OTI Annotation:** This clone was engineered to express the complete ORF with an expression tag. Expression varies depending on the nature of the gene.

**Components:** The ORF clone is ion-exchange column purified and shipped in a 2D barcoded Matrix tube containing 10ug of transfection-ready, dried plasmid DNA (reconstitute with 100 ul of water).

**Reconstitution Method:**

1. Centrifuge at 5,000xg for 5min.
2. Carefully open the tube and add 100ul of sterile water to dissolve the DNA.
3. Close the tube and incubate for 10 minutes at room temperature.
4. Briefly vortex the tube and then do a quick spin (less than 5000xg) to concentrate the liquid at the bottom.
5. Store the suspended plasmid at -20°C. The DNA is stable for at least one year from date of shipping when stored at -20°C.

**RefSeq:** [NM\\_013345.4](#)

**RefSeq Size:** 3788 bp

**RefSeq ORF:** 1143 bp

**Locus ID:** 29933

**UniProt ID:** [Q9UNW8](#)

**Cytogenetics:** 14q32.33

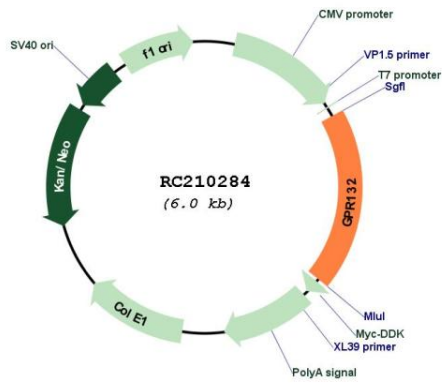
**Domains:** 7tm\_1

**Protein Families:** Druggable Genome, GPCR, Transmembrane

**MW:** 42.5 kDa

**Gene Summary:** This gene encodes a member of the guanine nucleotide-binding protein (G protein)-coupled receptor (GPCR) superfamily. The receptors are seven-pass transmembrane proteins that respond to extracellular cues and activate intracellular signal transduction pathways. This protein was reported to be a receptor for lysophosphatidylcholine action, but PubMedID: 15653487 retracts this finding and instead suggests this protein to be an effector of lysophosphatidylcholine action. This protein may have proton-sensing activity and may be a receptor for oxidized free fatty acids. Alternative splicing results in multiple transcript variants. [provided by RefSeq, Jul 2013]

Product images:



Circular map for RC210284