

Product datasheet for **RC210271**

CAPS (NM_004058) Human Tagged ORF Clone

Product data:

Product Type:	Expression Plasmids
Product Name:	CAPS (NM_004058) Human Tagged ORF Clone
Tag:	Myc-DDK
Symbol:	CAPS
Synonyms:	CAPS1
Mammalian Cell Selection:	Neomycin
Vector:	pCMV6-Entry (PS100001)
E. coli Selection:	Kanamycin (25 ug/mL)
ORF Nucleotide Sequence:	>RC210271 ORF sequence Red=Cloning site Blue=ORF Green=Tags(s)

TTTGTAAATACGACTCACTATAGGGCGGCCGGAATTCGTCGACTGGATCCGGTACCGAGGAGATCTGCC
GCC**CGATCGCC**

ATGGACGCCGTGGATGCCACCATGGAGAACTCCGGGCACAGTGCCTGTCCCGGGGGCCTCGGGCATCC
AGGGCTGGCCAGGTTTTTCGCCAACTAGACCGGGACGGGAGCAGATCCCTGGACGCTGATGAGTTCCG
GCAGGGTCTGGCCAACTCGGGCTGGTGTGGACAGCGGAGGCAGAGGGTGTGTGCAGGAAGTGGGAC
CGCAATGGCAGCGGGACGCTGGATCTGGAGGAGTTCCTTCGGGCGCTGCGGCCCCCATGTCCAGGCC
GGGAGGCTGTATCGCAGCTGCATTTGCCAAGCTGGACCGCAGCGGGACGGCGTCGTGACGGTGGACGA
CCTCCGCGGGGTGTACAGTGGCCGTGCCACCCCAAGGTGCGCAGTGGGGAGTGGACCGAGGACGAGGTG
CTGCGCCGCTTCTGGACAATTTCGACTCCTCTGAGAAGGACGGGAGGTCACTGCGGGAATTCAGG
ACTACTACAGCGGCGTGAGTGCCTCCATGAACCGGATGAGGAGTTCGTGGCCATGATGACCACTGCCTG
GCAGCTG

ACGCGTACGCGGCCGCTCGAGCAGAACTCATCTCAGAAGAGGATCTGGCAGCAATGATATCCTGGATT
ACAAGGATGACGACGATAAGGTTTAA

Protein Sequence:	>RC210271 protein sequence Red=Cloning site Green=Tags(s)
-------------------	--------------------------------------------------------------

MDAVDATMEKLRAQCLSRGASGIQGLARFFRQLDRDGSRLDADEFRQGLAKLGLVLDQAEAEVCRKWD
RNGSGTLDLEEFRLRPPMSQAREAVIAAFAKLD RSGDGVVTVDDL RGVYSGRAHPKVRSGWTEDEV
LRRFLDNFDSSEKDGQVTLAEFQDYYSVGSASMNTDEEFVAMMTSAWQL

TRTRPLEQKLISEEDLAANDILDYKDDDDKV

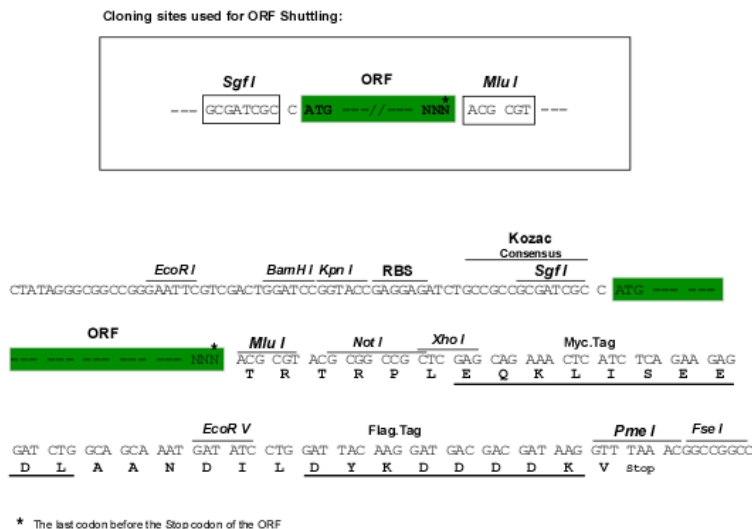


[View online »](#)

Chromatograms: https://cdn.origene.com/chromatograms/mk6546_d10.zip

Restriction Sites: SgfI-MluI

Cloning Scheme:



ACCN: NM_004058

ORF Size: 567 bp

OTI Disclaimer: The molecular sequence of this clone aligns with the gene accession number as a point of reference only. However, individual transcript sequences of the same gene can differ through naturally occurring variations (e.g. polymorphisms), each with its own valid existence. This clone is substantially in agreement with the reference, but a complete review of all prevailing variants is recommended prior to use. [More info](#)

OTI Annotation: This clone was engineered to express the complete ORF with an expression tag. Expression varies depending on the nature of the gene.

Components: The ORF clone is ion-exchange column purified and shipped in a 2D barcoded Matrix tube containing 10ug of transfection-ready, dried plasmid DNA (reconstitute with 100 ul of water).

Reconstitution Method:

1. Centrifuge at 5,000xg for 5min.
2. Carefully open the tube and add 100ul of sterile water to dissolve the DNA.
3. Close the tube and incubate for 10 minutes at room temperature.
4. Briefly vortex the tube and then do a quick spin (less than 5000xg) to concentrate the liquid at the bottom.
5. Store the suspended plasmid at -20°C. The DNA is stable for at least one year from date of shipping when stored at -20°C.

RefSeq: [NM_004058.5](#)

RefSeq Size: 1613 bp

RefSeq ORF: 570 bp

Locus ID: 828

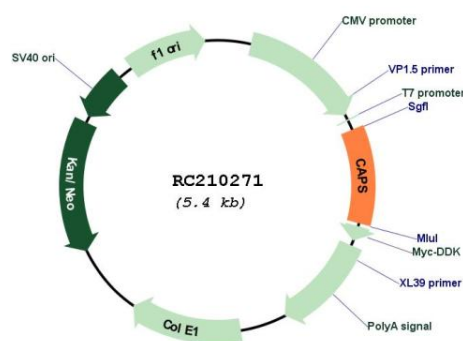
UniProt ID: [Q13938](#)

Cytogenetics: 19p13.3

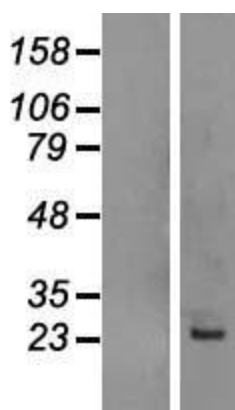
MW: 21 kDa

Gene Summary: This gene encodes a calcium-binding protein, which may play a role in the regulation of ion transport. A similar protein was first described as a potentially important regulatory protein in the dog thyroid and was termed as R2D5 antigen in rabbit. Alternative splicing of this gene generates two transcript variants. [provided by RefSeq, Jul 2008]

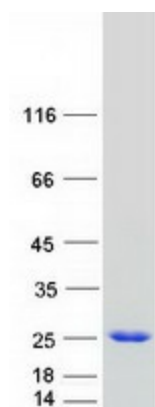
Product images:



Circular map for RC210271



Western blot validation of overexpression lysate (Cat# [LY418250]) using anti-DDK antibody (Cat# [TA50011-100]). Left: Cell lysates from untransfected HEK293T cells; Right: Cell lysates from HEK293T cells transfected with RC210271 using transfection reagent MegaTran 2.0 (Cat# [TT210002]).



Coomassie blue staining of purified CAPS protein (Cat# [TP310271]). The protein was produced from HEK293T cells transfected with CAPS cDNA clone (Cat# RC210271) using MegaTran 2.0 (Cat# [TT210002]).