

## Product datasheet for **RC210270**

### **CKAP4 (NM\_006825) Human Tagged ORF Clone**

#### **Product data:**

Product Type:	Expression Plasmids
Product Name:	CKAP4 (NM_006825) Human Tagged ORF Clone
Tag:	Myc-DDK
Symbol:	CKAP4
Synonyms:	CLIMP-63; CLIMP63; ERGIC-63; p63
Mammalian Cell Selection:	Neomycin
Vector:	pCMV6-Entry (PS100001)
E. coli Selection:	Kanamycin (25 ug/mL)



[View online »](#)

**ORF Nucleotide Sequence:**

>RC210270 representing NM\_006825  
 Red=Cloning site Blue=ORF Green=Tags(s)

TTTTGTAATACGACTCACTATAGGGCGGCCGGAATTCGTCGACTGGATCCGGTACCGAGGAGATCTGCC  
 GCC**CGGATCGCC**

ATGCCCTCGGCCAAACAAAGGGCTCCAAGGGCGGCCACGGCCGCGAGCCCTCGGAGAAGGGTGCCC  
 ACCCGTCGGGCGGCGCGGATGACGTGGCGAAGAAGCCGCGCGCGCCGAGCAGCCGCCCGCCGCC  
 CGCGCCGACCCGACGACGACCCGCGAGCAGCACCAGCAGCACCAGCAGAACAGGCGCACGGCAAGGGCGGCCACCGC  
 GGCGGGCGGCGGCGGCGGCAAGTCTCTCTCTCTCTCCGCCTCCGCGCGCGCTGCCGCCGCCGCCG  
 CCTCGTCTCGGCGTCTGCTCGCGCAGGCTCGGCAGGGCGCTCAACTTTCTTTCTACCTCGCCCTGGT  
 GGCGGGCGGCCGTTTCTCGGGCTGGTGCCTCACCACGTCTGGAGGAGTCCAGCAGTCCGGCGCAGC  
 CACCAGGACTTCTCCCGCAGAGGGAGGAGCTGGGCCAGGGCTTGACAGGGCGTGCAGCAGAAGGTGCAGT  
 CTTTGCAAGCCACATTTGAACTTTTGTGATCCATCTTGAGAAGCTCCCAACATAAACAAGACCTCACAGA  
 GAAAGCTGTGAAGCAAGGGGAGAGTGAGGTGAGCCGGATCAGCGAAGTGTGCAGAACTCCAGAATGAG  
 ATTCTCAAAGACCTCTCGGATGGATCCATGTGGTGAAGGACGCCGGGAGCGGGACTTCACGTCCTCGG  
 AGAACACGGTGGAGGAGCGGCTGACGGAGCTACCAAAATCCATCAACGACAACATCGCCATCTTACAGA  
 AGTCCAGAAGAGGAGCCAGAAGGAGATCAATGACATGAAGGCAAAGGTTGCCTCCCTGGAAGAATCTGAG  
 GGAACAAGCAGGATTTGAAAGCCTTAAGGAAGCTGTGAAGGAGATACAGACCTCAGCCAAGTCCAGAG  
 AGTGGGACATGGAGGCCCTGAGAAGTACCTTCAGACTATGGAGTCTGACATCTACACCGAGGTCGCGCA  
 GCTGGTGAAGCTCAAGCAGGAGCAGCAGGCTTCAAGGAGGCGGCCGACCGGAGCGGCTCGCCCTGCAG  
 GCCCTCACGGAGAAGCTTCTCAGGTCTGAGGAGTCCGTCTCCGCCTCCCGGAGGAGTCCGGAGACTGG  
 AGGAAGAGCTCCGCCAGCTGAAGTCCGATTTCCACGGGCGAAGGAGGACGGAGGCTTCCAGACACTCGGA  
 AGCCTTTGAGGCACTCCAGCAAAAGAGTCAAGGACTGGACTCCAGGCTCCAGCAGCTGGAGGATGGGGTG  
 CTCTCCATGCAGGTGGTCTGCGCGCCAGACCGAGAGCCTGGAGTCCCTCTGTCCAAGAGCCAGGAGC  
 ACGAGCAGCGCTGGCCGCCCTGCAGGGGCGCCTGGAAGGCTCGGGTCTCAGAGGCAGACCAGGATGG  
 CCTGGCCAGCACGGTGGAGGCTGGGCGAGACCCAGTGGTGTCTACGGTGCAGTGGAGGAGCTGAAG  
 AGGAGTGTGGGCGAGCTCCCAGCACCGTGAATCACTCCAGAAGGTGCAGGAGCAGGTGCACACGCTGC  
 TCAGTCAGGACCAAGCCAGGCCCGCTCTGCCTCCTCAGGACTTCTGGACAGACTTTCTTCTAGA  
 CAACCTGAAAGCCTCAGTCAGCCAAGTGGAGGCGGACTGAAAATGCTCAGGACTGCTGTGGACAGTTTG  
 GTTGCACTCGGTCAAATAGAAACCAACGAGAACAACTGGAATCAGCCAAGGGTTTACTAGATGACC  
 TGAGGAATGATCTGGATAGGTTGTTTGTGAAAGTGGAGAAGATCACGAAAAGGTC

**ACGCGT**ACGCGGCGGCTCGAGCAGAAACTCATCTCAGAAGAGGATCTGGCAGCAAATGATATCCTGGATT  
 ACAAGGATGACGACGATAAGGTTTAA

**Protein Sequence:**

>RC210270 representing NM\_006825  
 Red=Cloning site Green=Tags(s)

MPSAKQRGSKGGHGAASPSEKGAHPSGGADDVAKPPPPAPQPPPPPPAPHPQQHPQHPQNHGKGGHR  
 GGGGGGKSSSSSSASAAAAAASSSASCSRRLGRALNFLFYLAALVAAAAFSGWCVHHVLEEVQVRRS  
 HQDFSQRQREELGQGLQGVEQKVQSLQATFGTFESILRSSQHKQDLTEKAVKQGESEVSRISEVLQKLQNE  
 ILKDLSDGIHVVKDARERDFTSLENTVEERLTELTKSINDNIAIFTEVQKRSQKEINDMKAKVASLEESE  
 GNKQDLKALKEAVKEIQTSAKSREWDMEALRSTLQTMESDIYTEVRELVSLSKQEQAFKEAADTERLALQ  
 ALTEKLLRSEESVSRLPEEIRLLEEELRQLKSDSHGPKEDGGFRHSEAFEALQKQSQGLDSRLQHVEDGV  
 LSMQVASARQTESLESLLSKSQEHEQRLAALQGRLEGLGSEADQDGLASTVRSLETQLVLYGDVEELK  
 RSVGELPSTVESLQKVQEQVHTLLSQDQAQAARLPPQDFLDRLSSLDNLKASVSQVEADLKMLRTAVDSL  
 VAYSVKIETNENNLESAKGLDDLRNDLDRFLVKVEIHEKV

**TR**TRPLEQKLISEEDLAANDILDYKDDDDKV

**Restriction Sites:**

Sgfl-MluI

**Cloning Scheme:**


**ACCN:** NM\_006825

**ORF Size:** 1806 bp

**OTI Disclaimer:** The molecular sequence of this clone aligns with the gene accession number as a point of reference only. However, individual transcript sequences of the same gene can differ through naturally occurring variations (e.g. polymorphisms), each with its own valid existence. This clone is substantially in agreement with the reference, but a complete review of all prevailing variants is recommended prior to use. [More info](#)

**OTI Annotation:** This clone was engineered to express the complete ORF with an expression tag. Expression varies depending on the nature of the gene.

**Components:** The ORF clone is ion-exchange column purified and shipped in a 2D barcoded Matrix tube containing 10ug of transfection-ready, dried plasmid DNA (reconstitute with 100 ul of water).

- Reconstitution Method:**
1. Centrifuge at 5,000xg for 5min.
  2. Carefully open the tube and add 100ul of sterile water to dissolve the DNA.
  3. Close the tube and incubate for 10 minutes at room temperature.
  4. Briefly vortex the tube and then do a quick spin (less than 5000xg) to concentrate the liquid at the bottom.
  5. Store the suspended plasmid at -20°C. The DNA is stable for at least one year from date of shipping when stored at -20°C.

**RefSeq:** [NM\\_006825.4](#)

**RefSeq Size:** 2913 bp

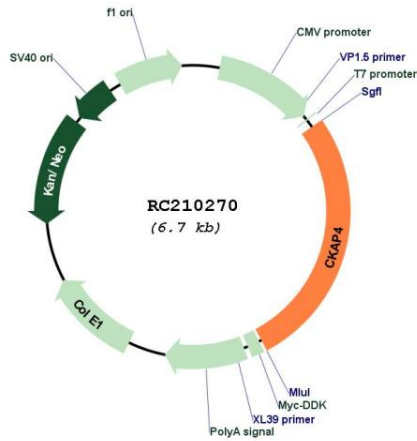
**RefSeq ORF:** 1809 bp

**Locus ID:** 10970

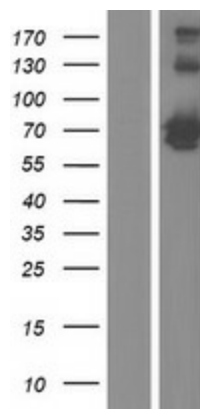
**UniProt ID:** [Q07065](#)

**Cytogenetics:** 12q23.3  
**Protein Families:** Druggable Genome, Transmembrane  
**MW:** 65.8 kDa  
**Gene Summary:** High-affinity epithelial cell surface receptor for APF.[UniProtKB/Swiss-Prot Function]

**Product images:**



Circular map for RC210270



Western blot validation of overexpression lysate (Cat# [LY416396]) using anti-DDK antibody (Cat# [TA50011-100]). Left: Cell lysates from untransfected HEK293T cells; Right: Cell lysates from HEK293T cells transfected with RC210270 using transfection reagent MegaTran 2.0 (Cat# [TT210002]).