

Product datasheet for **RC210263**

EXOC2 (NM_018303) Human Tagged ORF Clone

Product data:

Product Type:	Expression Plasmids
Product Name:	EXOC2 (NM_018303) Human Tagged ORF Clone
Tag:	Myc-DDK
Symbol:	EXOC2
Synonyms:	NEDFACH; SEC5; SEC5L1; Sec5p
Mammalian Cell Selection:	Neomycin
Vector:	pCMV6-Entry (PS100001)
E. coli Selection:	Kanamycin (25 ug/mL)



[View online »](#)

ORF Nucleotide Sequence:

>RC210263 representing NM_018303
 Red=Cloning site Blue=ORF Green=Tags(s)

TTTTGTAATACGACTCACTATAGGGCGGCCGGGAATTCGTCGACTGGATCCGGTACCGAGGAGATCTGCC
 GCC**CGCATCGCC**

ATGTCTCGATCACGACAACCCCCCTTGTGACCGGCATCTCTCCAAATGAAGGGATACCATGGACGAAGG
 TCACAATCAGGGGAGAAAATCTGGGGACTGGCCCCACCGACCTCATAGGCTTGACATTTGTGGACATAA
 TTGCCTCTGACGGCAGAAATGGATGTCTGCAAGTAAAATAGTATGTGAGTGGGACAAGCAAAAATGAC
 AAAGGAGACATTATTGTCACTAAGTCAGGTGGCAGAGGAACCTCAACAGTCTCTTTCAAGCTACTCA
 AACCTGAGAAAATAGGCATTTTGGATCAGTCTGCTGTGTGGGTTGATGAAATGAATTATTATGATATGCG
 CACTGACAGGAACAAAGGAATCCGCCCTTGTCTTACGTCTGCTAACCCGCTTGGCATTGAGATTGAA
 AAAAGTAAATTTTCGAGAAGGACTTAGAAATGCTATTCCATGGAATGAGTGTGATTTTACAAGTGA
 ATTTCTCAGCAGCTGGTATCTTATAGAGAATCACTCAAACACCAAGTTTGGAGCAGCTCAAATGGCAGT
 CACCAACCTAAAGAGACAGGCTAACAAGAAGAGTGAGGGCAGCCTGGCCTATGTGAAAGGCGGTCTCAGT
 ACATTTCTGAAGCACAGGATGCCCTCTCAGCCATCCATCAAAAAGTGAAGCAGATGGAACGGAAAAAG
 TAGAAGGATCCATGACGCAGAAAAGTGGAGAATGTTCTGAACAGAGCAAGTAACTGCAGACACATTGTT
 TCAAGAAGTATTAGTCCGAAAGACAAGGCAGATCCACTAGAAAAGCACTCAATGTGCTTCAGCGATTT
 AAGTTTCTTTCAACCTTCTCTAAATATTGAAAGGAATATTCAAAAGGGTGATTATGATGTGGTTATTA
 ATGATTATGAAAAGGCCAAGTCACTTTTGGGAAAACGGAGGTGCAAGTTTCAAGAAAATATTATGCTGA
 AGTAGAAAACAAGGATTGAAGCTTTAAGAGAATTACTTCTGGATAAATTGCTTGAGACACCATCAACTTTA
 CATGACCAAAAACGTTACATAAGGTACCTGTGACCTTCATGCGTCTGGTGACCTGCTGGCAATGCA
 TTGGAGCCCAACACAAGTGGATCCTTCAGCTCATGCACAGTTGCAAAGAGGGCTACGTGAAAGATCTGAA
 AGGTAACCCAGGCTGCACAGTCCCATGTTGGATCTTGATAATGATACAGTCCCTCAGTGTGGGCCAT
 CTCAGTCAGACAGCGTCCCTGAAGAGGGCAGCAGCTTTCAGTCTGGTTCGAGACGACAGTGGAGATACA
 AAACCTCCACAGGGTGGCCTTTGTTGAAAAATTGACAAAAGTCTGTTGAGCCAGCTGCCTAACTTCTG
 GAAACTCTGGATCTCTACGTTAATGGAAGCCTTTCAGTGGAGCTGCTGAGAAGTCAAGCCAGATTGAA
 AGATCAAAGAATGTAAGGCAAAGACAAAATGATTTTAAGAAAATGATTCAAGGAAGTAACTCACTCCCTGG
 TGAAGCTTACCCGCGGAGCCCTGCTTCCCTCAGCATCCGGGATGGGGAAGCCAAGCAGTACGGAGGCTG
 GGAGGTGAAGTGCAGCTCTCCGACAGTGGCTCGCTCACGCCATCCAGACTGTAAGACTTACTCATGAA
 TCGTTGACTGCCCTTGAATTCCTAATGACCTGTTACAGACTATCCAGGATCTCATCTTGGATCTCCGAG
 TAGCTTGGCTAATGGCCAGTTCAGCAGCACGGCGGAAGAAAATAAGAGATTAGCTGAAAAAGAAGACTG
 GATTGTTGACAATGAAGGACTGACTTCTACCATGTCAGTTTGAACAGTGCATCGTGTGTTCTCTCGAG
 TCACTGAAGGGGGTTCTGGAGTGAAGCCGGGAGAGGCCAGTGTCTTCCAACAACCTAAAACACAGGAGG
 AGGTTTGGCAGCTAAGCATCAATATAATGCAGGTTTTTATATACTGTCTGGAACAGTTGAGCACCAAGCC
 TGATGCAGATATAGATACTACACATCTCTGTTGATGTTTCTTCCCCTGACTTGTGTTGGAAGTATCCAT
 GAAGACTTCAGCTTGACCTCAGAACAGCGCCTTTTGATAGTCTAAGTAAATGCTGCTATCTAGAAGCTC
 ACACCTTCTAAATATCGCAGAACATTTTGAAGCACAACCTCCAGGGAATAGAAAAATCACACAGGT
 TAGCATGGCCTCATTGAAAGAACTAGATCAAAGACTCTTTGAAAATTACATCGAGTTGAAAGCAGATCCC
 ATCGTTGGCTCCTTAGAACCTGGAATTTATGCAGGATATTTTGATTGGAAGGACTGCCTGCCTCCAACAG
 GTGTCAGAAAATTTTAAAGAAGCACTGGTGAATATAATTGCCGTGCATGCAGAGGTGTTCAACATTTT
 CAAAGAAGTGGTCCCTCGGTAATCAAGGTGATAGAAGCAGTTTCTGAAGAGCTCAGTGCAGTGTG
 CAGTGTGTTTATCCTTCAGCAAAAATGGAGCTTTACAGGCGAGACTTGAATCTGTGCTTTGAGGGACA
 CTGTGGCTGTTTACCTGACACCCGAAAGCAAGTCAAGTTTAAAGCAGGCTTTGGAAGCCCTGCCAGCT
 TTCCAGTGGAGCAGATAAAAAGTTACTGGAAGAGCTCCTGAACAAGTTCAAGAGTGCATGCACTTGCAG
 CTCACCTGTTTCAAGCAGCTTCTCAACCATGATGAAAAA

ACGCGTACGCGGCCGCTCGAGCAGAAAAGTCACTCTCAGAAGAGGATCTGGCAGCAAATGATATCCTGGATT
 ACAAGGATGACGACGATGAGGTTTAA

Protein Sequence: >RC210263 representing NM_018303
 Red=Cloning site Green=Tags(s)

MSRSRQPPLVTGISPNEGIPWTKVTIRGENLGTGPTDLIGLTICGHNCLLTAEWMSASKIVCRVQAKND
 KGDIIIVTTKSGGRGTSTVSFKLLKPEKIGILDQSAVVWDEMNYDMRTDRNKGIPPLSLRPANPLGIEIE
 KSKFSQKDLLEMLFHGMSADFTSENFSAAWYL IENHSNTSFEQLKMAVTNLKRQANKKSEGLAYVKGGLS
 TFFEAQDALSAIHQKLEADGTEKVEGSM TQKLENVLNRASNTADTLFQEVLGRKDKADSTRNALNVLQRF
 KFLFNLPNIERNIQKGDYDVVINDYEKAKSLFGKTEVQVFVKYYAEVETRIEALRELLDKLLETSTL
 HDQKRYIRYLSDLHASGDPAWQCIGA QHKWILQLMHSCKEGYVKDLKGNPGLHSPMLDLNDTRPSVLGH
 LSQTASLKRGSFQSGRDDTWRYKTPHRVAFVEKLTKLVLSQLPNFWKLWISYVNGSLFSETAEKSGQIE
 RSKNVRQRQNDFKKMIQEVMSL VKLTRGALLPLSIRDGEAKQYGGWEVKCELSGQWLAAHIQTVRLTHE
 SLTALEIPNDLLQTIQDLILDLRVRCVMATLQHTAEEIKRLAEKEDWIVDNEGLTSLPCQFEQCIVCSLQ
 SLKGVLECKPGEASV FQQPKTQEEVCQLSINIMQVFIYCLEQLSTKPDADIDTTHLSVDVSSPDLFGSIH
 EDFSLTSEQRLLIVLSNCCYLERHTFLNIAEHFEKHNFGIEKITQVSMASLKELDQRLFENYIELKADP
 IVGSLPFIYAGYFDWKDCLPPTGVRNYLKEALVNIIAVHAEVFTISKELVPRVLSKVIEAVSEELSRML
 QCVSSFKNQALQARLEICALRDTVAVYLTPESSFKQALEALPQLSSGADKKLLEELLNFKKSSMHLQ
 LTCFQAASSTMMKT

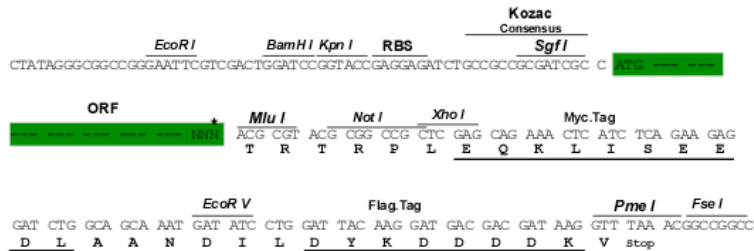
TRTRPLEQKLISEEDLAANDILDYKDDDDKV

Chromatograms: https://cdn.origene.com/chromatograms/mg4413_c06.zip

Restriction Sites: SgfI-MluI

Cloning Scheme:

Cloning sites used for ORF Shuttling:



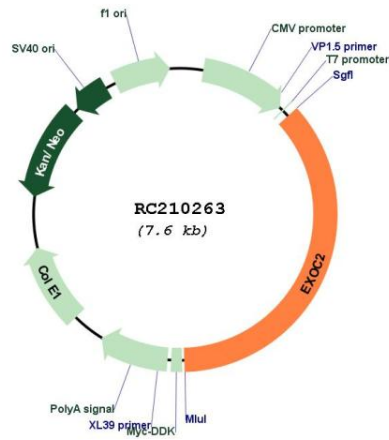
* The last codon before the Stop codon of the ORF

ACCN: NM_018303

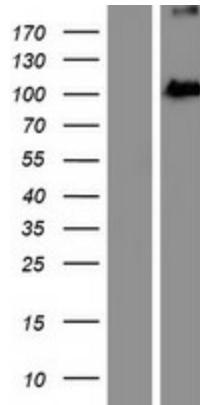
ORF Size: 2772 bp

OTI Disclaimer:	The molecular sequence of this clone aligns with the gene accession number as a point of reference only. However, individual transcript sequences of the same gene can differ through naturally occurring variations (e.g. polymorphisms), each with its own valid existence. This clone is substantially in agreement with the reference, but a complete review of all prevailing variants is recommended prior to use. More info
OTI Annotation:	This clone was engineered to express the complete ORF with an expression tag. Expression varies depending on the nature of the gene.
Components:	The ORF clone is ion-exchange column purified and shipped in a 2D barcoded Matrix tube containing 10ug of transfection-ready, dried plasmid DNA (reconstitute with 100 ul of water).
Reconstitution Method:	<ol style="list-style-type: none">1. Centrifuge at 5,000xg for 5min.2. Carefully open the tube and add 100ul of sterile water to dissolve the DNA.3. Close the tube and incubate for 10 minutes at room temperature.4. Briefly vortex the tube and then do a quick spin (less than 5000xg) to concentrate the liquid at the bottom.5. Store the suspended plasmid at -20°C. The DNA is stable for at least one year from date of shipping when stored at -20°C.
RefSeq:	NM_018303.6
RefSeq Size:	4458 bp
RefSeq ORF:	2775 bp
Locus ID:	55770
UniProt ID:	Q96KP1
Cytogenetics:	6p25.3
Domains:	IPT
MW:	103.9 kDa
Gene Summary:	The protein encoded by this gene is a component of the exocyst complex, a multi-protein complex essential for the polarized targeting of exocytic vesicles to specific docking sites on the plasma membrane. Though best characterized in yeast, the component proteins and the functions of the exocyst complex have been demonstrated to be highly conserved in higher eukaryotes. At least eight components of the exocyst complex, including this protein, are found to interact with the actin cytoskeletal remodeling and vesicle transport machinery. This interaction has been shown to mediate filopodia formation in fibroblasts. This protein has been shown to interact with the Ral subfamily of GTPases and thereby mediate exocytosis by tethering vesicles to the plasma membrane. Alternative splicing results in multiple transcript variants. [provided by RefSeq, Jul 2012]

Product images:



Circular map for RC210263



Western blot validation of overexpression lysate (Cat# [LY413149]) using anti-DDK antibody (Cat# [TA50011-100]). Left: Cell lysates from untransfected HEK293T cells; Right: Cell lysates from HEK293T cells transfected with RC210263 using transfection reagent MegaTran 2.0 (Cat# [TT210002]).