

Product datasheet for **RC210255**

HIF3 alpha (HIF3A) (NM_152795) Human Tagged ORF Clone

Product data:

Product Type:	Expression Plasmids
Product Name:	HIF3 alpha (HIF3A) (NM_152795) Human Tagged ORF Clone
Tag:	Myc-DDK
Symbol:	HIF3 alpha
Synonyms:	bHLHe17; HIF-3A; HIF3-alpha-1; IPAS; MOP7; PASD7
Mammalian Cell Selection:	Neomycin
Vector:	pCMV6-Entry (PS100001)
E. coli Selection:	Kanamycin (25 ug/mL)



[View online »](#)

ORF Nucleotide
Sequence:

>RC210255 representing NM_152795
Red=Cloning site Blue=ORF Green=Tags(s)

TTTTGTAATACGACTCACTATAGGGCGGCCGGGAATTCGTCGACTGGATCCGGTACCGAGGAGATCTGCC
GCCGCGATCGCC

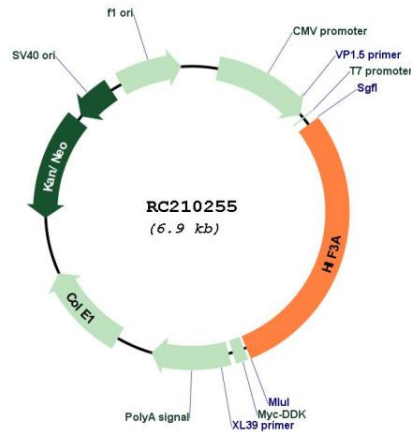
ATGGCGCTGGGGCTGCAGCGCGCAAGGTCGACCACGGAGCTGCGCAAGGAAAAGTCCCGGATGCGGCC
GCAGCCGGCGCAGCCAGGAGACCGAGGTGCTGTACCAGCTGGCTCACACGCTGCCCTTCGCCCGCGGCGT
CAGCGCCACCTGGACAAGGCCTCTATCATGCGCCTCACCATCAGCTACCTGCGCATGCACCGCCTCTGC
GCCGAGGGGAGTGGAACCAGGTGGGAGCAGGGGAGAACCCTGGATGCCTGCTACCTGAAGGCCCTGG
AGGGCTTCGTCATGGTGCTCACCGCGAGGGAGACATGGCTTACCTGTGCGGAGAAATGTCAGCAAACCT
GGGCCTCAGTCAGCTGGAGCTCATTGGACACAGCATCTTTGATTTTATCCACCCCTGTGACCAAGAGGAG
CTTCAGGACGCCCTGACCCCGCAGACCCCTGTCCAGGAGGAAGGTGGAGGCCCCACGGAGCGGTGCT
TCTCCTTGCGCATGAAGAGTACGCTCACCAGCCGCGGGCGCACCCCTAACCTCAAGGCGGCCACCTGGAA
GGTGCTGAACTGCTCTGGACATATGAGGGCCTACAAGCCACCTGCGCAGACTTCTCCAGCTGGGAGCCCT
GACTCAGAGCCCCGCTGCAAGTGCCTGGTGTCTATCTGCGAAGCCATCCCCACCCAGGCAGCCTGGAGC
CCCCACTGGGCCGAGGGCCCTTCTCAGCCGCCACAGCCTGGACATGAAGTTCACCTACTGTGACGACAG
GATTGCAGAAAGTGGCTGGCTATAGTCCCAGTACCTGATCGGCTGTTCCGCCCTACGAGTACATCCACGCG
CTGGACTCCGATGCGGTGAGCAAGAGCATCCACACCTTGTGAGCAAGGGCCAGGAGTAAACAGGGCAGT
ATCGCTTCTGGCCCGGAGTGGTGGCTACCTGTGGACCCAGACCCAGGCCACAGTGGTGTGAGGGGGACG
GGGCCCCCAGTCGGAGAGTATCGTCTGTGTCCATTTTTAATCAGCCAGGTGGAAGAGACCCGGAGTGGT
CTGTCCCTGGAGCAAACGGAGCAACTCTCGCAGACCCATTAGCGGGGGCGCCCTCTCAGAAGGACA
CCCCTAACCTGGGGACAGCCTTGACACCCCTGGCCCCGGATCCTTGCCTTCTGCACCCGCCTTCCCT
GAGCGAGGCTGCCCTGGCCGCTGACCCCGCCGTTTTCTGCAGCCCTGACCTCCGTGCGCTCCTGGGACCC
ATCCTGGATGGGGCTTCACTAGCAGCCACTCCCAGCACCCCGCTGGCCACACGGCACCCCAAGTCCCTC
TTTCGGCTGATCTCCCAGATGAACTACCTGTGGGCACCGAGAATGTGCACAGACTCTTACCTCCGGGAA
AGACTACTGAGGCAGTGGAGACAGATTTAGATATAGCTCAGGATGCTGATGCTCTGGATTTGGAGATGCTG
GCCCCCTACATCTCCATGGATGATGACTCCAGCTCAACGCCAGCGAGCAGTACCCAGGGCCTACCACA
GACCTCTGGGGGCTGTCCCCGGCCCCGTGCTCGGAGCTTCCATGGCCTGTACCTCCAGCCCTTGAGCC
CTCCCTGCTACCCCGCTGGGGGAGTGACCCCGGCTGAGCTGCTCCAGCCCTTCCAGAGGGGACCCCTCA
GCATCCTCTCCATGGCTGGGGCTCGGAAGAGGACCCCTGGCCAGAGCTCAGAGGACGAGGACGAGGGAG
TGGAGCTGCTGGGAGTGAGACCTCCAAAAGGTCCCCAGCCAGAACACGAAAACCTTTCTGCTCTTTCC
TCTCAGCCTGAGTTTCTTCTGACAGGAGGACCCAGGGAGCCTGCAGGACCCAGCACCCCACTC
CTGAACCTGAATGAGCCCTGGGCTGGGCCCTCACTGCTCTCTCCGTACTIONCAGACGAGGACACTACCC
AGCCCGGGGGCCCTTCCAGCCAAGGGCAGGCTCAGCCAGGCTGAC

ACGCGTACGCGGCCGCTCGAGCAGAAACTCATCTCAGAAGAGGATCTGGCAGCAAATGATATCCTGGATT
ACAAGGATGACGACGATAAGGTTTAA

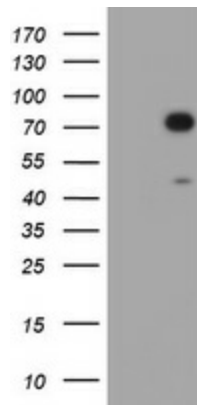
OTI Disclaimer:	<p>Due to the inherent nature of this plasmid, standard methods to replicate additional amounts of DNA in E. coli are highly likely to result in mutations and/or rearrangements. Therefore, OriGene does not guarantee the capability to replicate this plasmid DNA. Additional amounts of DNA can be purchased from OriGene with batch-specific, full-sequence verification at a reduced cost. Please contact our customer care team at custsupport@origene.com or by calling 301.340.3188 option 3 for pricing and delivery.</p> <p>The molecular sequence of this clone aligns with the gene accession number as a point of reference only. However, individual transcript sequences of the same gene can differ through naturally occurring variations (e.g. polymorphisms), each with its own valid existence. This clone is substantially in agreement with the reference, but a complete review of all prevailing variants is recommended prior to use. More info</p>
OTI Annotation:	This clone was engineered to express the complete ORF with an expression tag. Expression varies depending on the nature of the gene.
Components:	The ORF clone is ion-exchange column purified and shipped in a 2D barcoded Matrix tube containing 10ug of transfection-ready, dried plasmid DNA (reconstitute with 100 ul of water).
Reconstitution Method:	<ol style="list-style-type: none"> 1. Centrifuge at 5,000xg for 5min. 2. Carefully open the tube and add 100ul of sterile water to dissolve the DNA. 3. Close the tube and incubate for 10 minutes at room temperature. 4. Briefly vortex the tube and then do a quick spin (less than 5000xg) to concentrate the liquid at the bottom. 5. Store the suspended plasmid at -20°C. The DNA is stable for at least one year from date of shipping when stored at -20°C.
Note:	Plasmids are not sterile. For experiments where strict sterility is required, filtration with 0.22um filter is required.
RefSeq:	NM_152795.4
RefSeq Size:	5850 bp
RefSeq ORF:	2010 bp
Locus ID:	64344
UniProt ID:	Q9Y2N7
Cytogenetics:	19q13.32
Domains:	PAS, HLH
Protein Families:	Druggable Genome, Transcription Factors
MW:	72.3 kDa

Gene Summary:

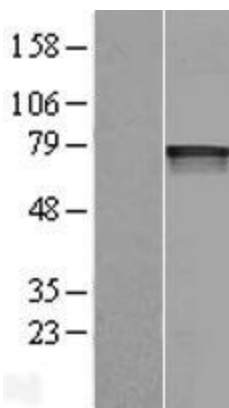
The protein encoded by this gene is the alpha-3 subunit of one of several alpha/beta-subunit heterodimeric transcription factors that regulate many adaptive responses to low oxygen tension (hypoxia). The alpha-3 subunit lacks the transactivation domain found in factors containing either the alpha-1 or alpha-2 subunits. It is thought that factors containing the alpha-3 subunit are negative regulators of hypoxia-inducible gene expression. Multiple alternatively spliced transcript variants have been found for this gene. [provided by RefSeq, Mar 2011]

Product images:


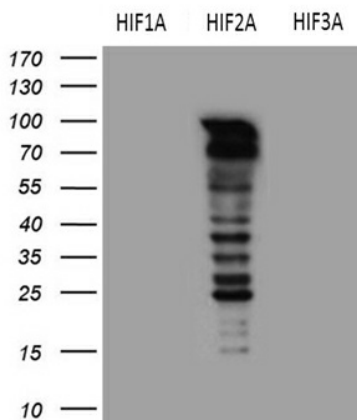
Circular map for RC210255



HEK293T cells were transfected with the pCMV6-ENTRY control (Cat# [PS100001], Left lane) or pCMV6-ENTRY HIF3A (Cat# RC210255, Right lane) cDNA for 48 hrs and lysed. Equivalent amounts of cell lysates (5 ug per lane) were separated by SDS-PAGE and immunoblotted with anti-HIF3A (Cat# [TA800720]). Positive lysates [LY407285] (100ug) and [LC407285] (20ug) can be purchased separately from OriGene.



Western blot validation of overexpression lysate (Cat# [LY407285]) using anti-DDK antibody (Cat# [TA50011-100]). Left: Cell lysates from untransfected HEK293T cells; Right: Cell lysates from HEK293T cells transfected with RC210255 using transfection reagent MegaTran 2.0 (Cat# [TT210002]).



HEK293T cells were transfected with the pCMV6-HIF1A (Cat# [RC202461]), pCMV6-EPAS1 (Cat# [RC208604]) and pCMV6-HIF3A (Cat# RC210255) (1:2000).