

Product datasheet for **RC210251**

DCAF15 (NM_138353) Human Tagged ORF Clone

Product data:

| | |
|---------------------------|---|
| Product Type: | Expression Plasmids |
| Product Name: | DCAF15 (NM_138353) Human Tagged ORF Clone |
| Tag: | Myc-DDK |
| Symbol: | DCAF15 |
| Synonyms: | C19orf72 |
| Mammalian Cell Selection: | Neomycin |
| Vector: | pCMV6-Entry (PS100001) |
| E. coli Selection: | Kanamycin (25 ug/mL) |



[View online »](#)

ORF Nucleotide Sequence:

>RC210251 ORF sequence
 Red=Cloning site Blue=ORF Green=Tags(s)

TTTTGTAATACGACTCACTATAGGGCGGCCGGAATTCGTCGACTGGATCCGGTACCGAGGAGATCTGCC
 GCC**CGGATCGCC**

ATGGCGCCAGCTCGAAATCGGAGCGGAACAGCGGGCTGGGAGCGGCGGCGGCCCGGGGAGCCG
 GAGGGAAGCGGGCAGCAGGGCGGCGGGGAGCACGTCTCAAGCAGCTGGAGCGGGTCAAGATCAGCGG
 ACAGCTCTCCCTCGCCTCTCCGGAAGCTGCCTCCCGGGTGTGCGTGTCCCTCAAGAATTGTGGAT
 GAGGACTTCTCTATGCAGGACATATCTTCTGGGCTTTTCCAAATGCGGCCGCTACGTCCTCTCTACA
 CCAGCAGCAGTGGGGATGACGACTTCTCTTCTACATCTACCATCTGTAAGTGGTGGGAGTTCAACGTTCA
 CAGCAAGCTCAAGCTGGTCCGCGCAGGTTTCGGCTATTCCAGGACGAGGAGATCTACAGCGACTGTACCTG
 ACCGTATGCGAGTGGCCAGCGACGCTCAAGGTCATCGTCTTCGGCTTCAACACCCGCTCGGCCAACG
 GGATGCTCATGAACATGATGATGATGAGTGACGAGAACCACCGTACATCTACGTCAGCACCGTGGCCGT
 GCCACCGCCAGGCCGCTGTGCTGCTTCCAGGATGCCAGCGAGCCACCCAGGAGACCCGAATGCACAG
 TGCTACGGCATGGCTTCATGCTGCACACCAAGTACCAGGTGGTCTACCCCTTCCCACCTTCCAGCCCG
 CCTTCCAGCTCAAGAAGGACCAGGTGGTGTGCTCAACACCAGCTACTCCCTGGTGGCCTGCGCCGTCTC
 CGTCCACTCGGCAGGTGACAGGAGTTTCTGCCAAATCCTGTATGACCACAGCACCTGCCCCCTGGCGCT
 GCCAGCCCCCTGAGCCCCAGAGCCCAGAGCTGCCCCCTGCCCTCCCAGCTTCTGCCCTGAGGCGGCC
 CAGCCCGTTCTTCTGGGTCTCCTGAGCCCTCGCCCGCCATTGCCAAAGCCAAGGAGTTTGTGGCTGACAT
 CTTCCGCCGGGCCAAAGAGGCCAAGGGCGGGTCCCTGAGGAAGCCCGGCTGCCCTGTGCCAGGACCC
 TCTGGCAGCCGCTGCCGTGCGCACTCTGAGCCCTAGCCCTGTGTGGAGAGACGGCACCCGGGACAGCC
 CCCCTGCCTCGGAGGCACCTGCCTCCGAGCCTGGCTATGTCAACTACACCAAGCTGACTATGTGCTGGA
 GTCCGGAGAGGGGACGGAGCCGGAGGATGAGTTGGAGGACGACAAGATCTCCCTGCCCTTGTGGTGGT
 GATCTTGTGGCCGAACCTGCGGCCATGCGGGAGCGGACTGCTGTCCAGGGCCAGTACCTGACAGTGG
 AGCAGCTCACACTAGACTTCGAATATGTTATCAATGAGGTATCCGCCACGACGCTACCTGGGGCCATCA
 GTTCTGTTCTTTCAGCGACTATGACATCGTCACTTCTGGAGGTCTGCCAGAAACCAACAGGTCCTCATC
 AACATTGGCCTGTGCTCCTGCCCTTCCCGTCCCCACTGAGGAGGGCCAGCTCCGACCAAGACCTATC
 ACACCAGCCTCAAGGTGGCATGGGACCTCAACACAGGGATCTTCGAGACAGTCAAGTGTAGGCGACCTGAC
 TGAGGTCAAAGGGCAGACCAGCGCAGTGTCTGGAGCTCTACCGCAAGAGCTGCGTGGACATGGTCATG
 AAGTGGCTGGTCCGGAGAGCAGCGGCCGCTACGTCAACAGGATGACCAATGAGGCGCTGCACAAAGGGT
 GCTCCCTGAAGGTTCTGGCGGACAGCGAGCGATATACGTGGATCGTGCTG

ACGCGTACGCGGCCGCTCGAGCAGAACTCATCTCAGAAGAGGATCTGGCAGCAAATGATATCCTGGATT
 ACAAGGATGACGACGATAAGGTTTAA

Protein Sequence:

>RC210251 protein sequence
 Red=Cloning site Green=Tags(s)

MAPSSKSERNSGAGSGGGPGGAGGKRAAGRRREHVLKQLERVKISGQLSPRLFRKLPPRVCVSLKNI
 EDFLYAGHIFLGFSGCRYVLSYSSSGDDDFSYIYHL YWWEFNVHSLKLVQRVLFQDEEISDLYL
 TVCEWPSDASKVIVFGFNTRSANGMLMNMMSDENHRDIYVSTVAVPPPGRCAACQDASRAHPGDPNAQ
 CLRHGFMHLTKYQVYVFPFTQPAFQLKKDQVLLNTSYSLVACAVSVHSAGDRSFCQILYDHSTCPLAP
 ASPPEPQSPPELPPALPSFCPEAAPARSSGSPSPAIKAKEFVADIFRRAKEAKGGVPEEARPALCPGP
 SGRSRAHSEPLALCGETAPRDSPPASEAPASEPGYVNYTKLYVLESGEGTEPEDELEDDKISLFPVVT
 DLRGRNLRPMRERTAVQGQYLTVLQTLDFEYVINEVIRHDATWGHQFCFSFDYDILEVCPETNQVLI
 NTGLLLLAFPSPTTEEGQLRPKYHTSLKVAWDLNTGIFETVSVGDLTEVKGQTSGSVWSSYRKSVDMMV
 KWLVPESGRYVNRMTNEALHKGCCLKVLADSERYTWIVL

TRTRPLEQKLISEEDLAANDILDYKDDDDKV

Chromatograms:

https://cdn.origene.com/chromatograms/mk6451_c02.zip

Restriction Sites: SgfI-MluI

Cloning Scheme:



ACCN: NM_138353

ORF Size: 1800 bp

OTI Disclaimer: The molecular sequence of this clone aligns with the gene accession number as a point of reference only. However, individual transcript sequences of the same gene can differ through naturally occurring variations (e.g. polymorphisms), each with its own valid existence. This clone is substantially in agreement with the reference, but a complete review of all prevailing variants is recommended prior to use. [More info](#)

OTI Annotation: This clone was engineered to express the complete ORF with an expression tag. Expression varies depending on the nature of the gene.

Components: The ORF clone is ion-exchange column purified and shipped in a 2D barcoded Matrix tube containing 10ug of transfection-ready, dried plasmid DNA (reconstitute with 100 ul of water).

- Reconstitution Method:**
1. Centrifuge at 5,000xg for 5min.
 2. Carefully open the tube and add 100ul of sterile water to dissolve the DNA.
 3. Close the tube and incubate for 10 minutes at room temperature.
 4. Briefly vortex the tube and then do a quick spin (less than 5000xg) to concentrate the liquid at the bottom.
 5. Store the suspended plasmid at -20°C. The DNA is stable for at least one year from date of shipping when stored at -20°C.

RefSeq: [NM_138353.3](#), [NP_612362.2](#)

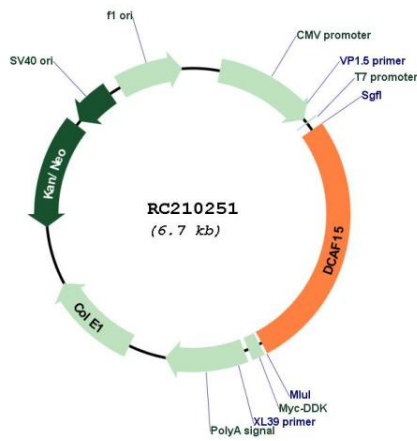
RefSeq Size: 2274 bp

RefSeq ORF: 1803 bp

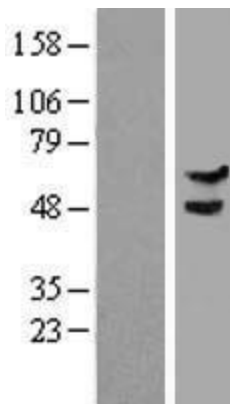
Locus ID: 90379

UniProt ID: [Q66K64](#)
 Cytogenetics: 19p13.12
 MW: 66.5 kDa
 Gene Summary: May be involved in ubiquitination and degradation through a DBB1-CUL4 E3 protein-ubiquitin ligase.[UniProtKB/Swiss-Prot Function]

Product images:



Circular map for RC210251



Western blot validation of overexpression lysate (Cat# [LY408626]) using anti-DDK antibody (Cat# [TA50011-100]). Left: Cell lysates from untransfected HEK293T cells; Right: Cell lysates from HEK293T cells transfected with RC210251 using transfection reagent MegaTran 2.0 (Cat# [TT210002]).