

Product datasheet for **RC210249**

C1orf104 (RUSC1-AS1) (NM_001039517) Human Tagged ORF Clone

Product data:

Product Type:	Expression Plasmids
Product Name:	C1orf104 (RUSC1-AS1) (NM_001039517) Human Tagged ORF Clone
Tag:	Myc-DDK
Symbol:	C1orf104
Synonyms:	C1orf104
Mammalian Cell Selection:	Neomycin
Vector:	pCMV6-Entry (PS100001)
E. coli Selection:	Kanamycin (25 ug/mL)
ORF Nucleotide Sequence:	>RC210249 ORF sequence Red=Cloning site Blue=ORF Green=Tags(s)

TTTTGTAATACGACTCACTATAGGGCGCCGGGAATTCGTCGACTGGATCCGGTACCGAGGAGATCTGCC
GCC**CGATCGCC**

ATGGAGCCGGGAGGGTCAGAGAACGCGGCTGCGCTCTGGATCTCCGAAGGGGGCGGGGCTGGAAGAG
GTCCGGGCCAGAATGGACCTCCAGGTCCTGCTGCCGAATCTGGCCCTGCCCTCCAGCCTACCCCTTA
CTCCCAGAGGAAGGGACCCAGGGAGACCCACCCAGATGCCCTGAAAGGAGGTGGAGGATGGGGTGGGGC
AATACGCAGAGTTTGTCTGGTGAATGCAGGAAAGGGTGGGGCTGGAGAGGAAAAGGATGGAGCAGCCG
TCAGCTTGTCACCTCCGCATCTGCTGGTGCCTCGGCCGGGCTCCAGCCTGCGCCCTCGCCCTCGAAC
AGCGGTATGTCCATTCTCTCCGATTCTGCTCCATCGTTTCAGCCACCACCGCACCCCTTTCTATTTCATT
TCTCCTGCTCCCTGTCTGCCCCGCCCTCGTGCCAGGTCCATCGGTCTACACCCATGGGCCGAGCCC
TCCTCACCAGGTCCTCCTGGAACCGCTCCGGCCTTGGGCTTGTCCGCGGCTCCCACGGTCCCCGCCCGG
CGGGCACAGAGCGGGAGGGGAGGGGCACTAGCACAACTACCCTGCGCTGCGCAGCTGCACCCCTTCG
GCATGGGCGTGGCGTAGCTCAGACCCGCCCCAGCGTTTAGCGTCTTTGTACCCACCTAGAGGGTTTG
ATATATCC

ACGCGTACGCGGCCGCTCGAGCAGAACTCATCTCAGAAGAGGATCTGGCAGCAAATGATATCCTGGATT
ACAAGGATGACGACGATAAGGTTTAA



[View online »](#)

Protein Sequence: >RC210249 protein sequence
 Red=Cloning site Green=Tags(s)

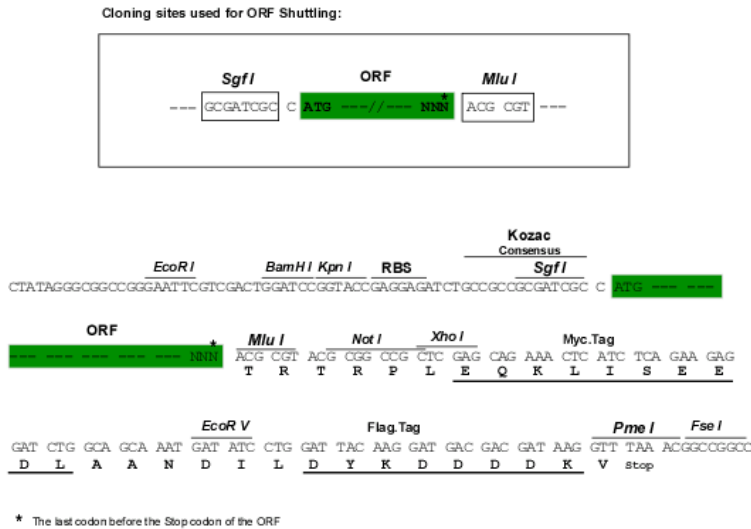
MEPGGSENAALWISEGGRGPGRGPPEWTSRSLLPQSGPALQPTPYSQRKGPRETHPDALKGGGGWG
 NTQSLSGEGRKGVGAGEEKDGAAVSLSTPHLLAASAGLQAPSPGLTAVCPFSPHSSPSFSHHRTLSLFI
 SPAPLSCPAPRAQVHRSTPMGRALLTRVLEPLRPWACPRLPRSPPGAQSGRGGALAQPTLRCAAAPLR
 AWAWRSSDPPPAFVSVFCHPPRGFDIS

TRTRPLEQKLISEEDLAANDILDYKDDDDKV

Chromatograms: https://cdn.origene.com/chromatograms/mk6543_h01.zip

Restriction Sites: SgfI-MluI

Cloning Scheme:



ACCN: NM_001039517

ORF Size: 708 bp

OTI Disclaimer: The molecular sequence of this clone aligns with the gene accession number as a point of reference only. However, individual transcript sequences of the same gene can differ through naturally occurring variations (e.g. polymorphisms), each with its own valid existence. This clone is substantially in agreement with the reference, but a complete review of all prevailing variants is recommended prior to use. [More info](#)

OTI Annotation: This clone was engineered to express the complete ORF with an expression tag. Expression varies depending on the nature of the gene.

Components: The ORF clone is ion-exchange column purified and shipped in a 2D barcoded Matrix tube containing 10ug of transfection-ready, dried plasmid DNA (reconstitute with 100 ul of water).

- Reconstitution Method:**
1. Centrifuge at 5,000xg for 5min.
 2. Carefully open the tube and add 100ul of sterile water to dissolve the DNA.
 3. Close the tube and incubate for 10 minutes at room temperature.
 4. Briefly vortex the tube and then do a quick spin (less than 5000xg) to concentrate the liquid at the bottom.
 5. Store the suspended plasmid at -20°C. The DNA is stable for at least one year from date of shipping when stored at -20°C.

RefSeq: [NM_001039517.1](#), [NP_001034606.1](#)

RefSeq Size: 1326 bp

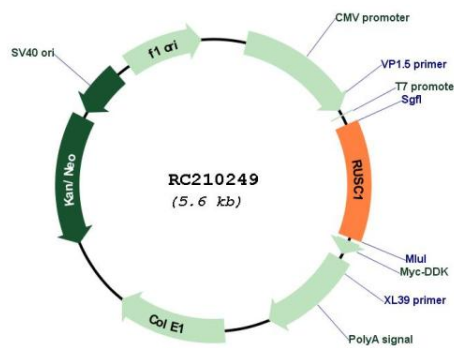
RefSeq ORF: 711 bp

Locus ID: 284618

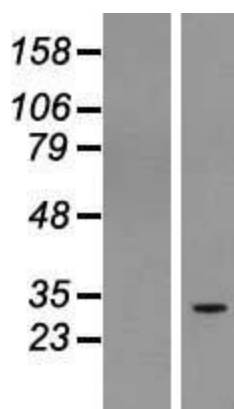
Cytogenetics: 1q22

MW: 24.5 kDa

Product images:



Circular map for RC210249



Western blot validation of overexpression lysate (Cat# [LY422064]) using anti-DDK antibody (Cat# [TA50011-100]). Left: Cell lysates from untransfected HEK293T cells; Right: Cell lysates from HEK293T cells transfected with RC210249 using transfection reagent MegaTran 2.0 (Cat# [TT210002]).