

Product datasheet for RC210246

CCR9 (NM_006641) Human Tagged ORF Clone

Product data:

Product Type:	Expression Plasmids
Product Name:	CCR9 (NM_006641) Human Tagged ORF Clone
Tag:	Myc-DDK
Symbol:	CCR9
Synonyms:	CC-CKR-9; CDw199; GPR-9-6; GPR28
Mammalian Cell Selection:	Neomycin
Vector:	pCMV6-Entry (PS100001)
E. coli Selection:	Kanamycin (25 ug/mL)
ORF Nucleotide Sequence:	>RC210246 representing NM_006641 Red=Cloning site Blue=ORF Green=Tags(s)

TTTTGTAATACGACTCACTATAGGGCGGCCGGAATTCGTCGACTGGATCCGGTACCGAGGAGATCTGCC
GCC**CGATCGCC**

ATGACACCCACAGACTTCACAAGCCCTATTCTAACATGGCTGATGACTATGGCTCTGAATCCACATCTT
CCATGGAAGACTACGTTAACTTCAACTTCACTGACTTCTACTGTGAGAAAAACAATGTCAGGCAGTTTGC
GAGCCATTTCTCCACCCTTGTACTGGCTCGTGTTCATCGTGGTGCCTTGGGCAACAGTCTTGTATC
CTTGTCTACTGGTACTGCACAAGAGTGAAGACCATGACCGACATGTTCTTTTGAATTTGGCAATTGCTG
ACCTCCTCTTTCTGTCACTCTTCCCTTCTGGGCCATTGCTGCTGCTGACCAGTGAAGTCCAGACCTT
CATGTGCAAGGTGGTCAACAGCATGTACAAGATGAACTTCTACAGCTGTGTGTTGCTGATCATGTGCATC
AGCGTGGACAGGTACATTGCCATTGCCAGGCCATGAGAGCACATACTTGGAGGGAGAAAAGGCTTTTGT
ACAGCAAATGGTTTGTCTTACCATCTGGGTATTGGCAGCTGCTCTGTCATCCCAGAAATCTTATACAG
CCAAATCAAGGAGGAATCCGGCATTGCTATCTGCACCATGGTTTACCCTAGCGATGAGAGCACAAACTG
AAGTCAGCTGTCTTGACCCTGAAGGTCACTTCTGGGTTCTTCTTCCCTCGTGGTCATGGCTTGTCTGT
ATACCATCATCATTACACCCTGATACAAGCCAAGAAGTCTTCCAAGCACAAAGCCCTAAAAGTGACCAT
CACTGTCTGACCGTCTTTGTCTGTCTCAGTTTCCCTACAACATGCAATTTGTTGGTGCAGACCATTGAC
GCCTATGCCATGTTCACTCCAAGTGTCCGTTTCCACCAACATTGACATCTGCTCCAGGTCACCCAGA
CCATCGCCTTCTCCACAGTTGCCTGAACCCTGTTCTCTATGTTTTTGTGGGTGAGAGATTCGCGCGGA
TCTCGTAAAACCTGAAGAAGTTGGGTTGCATCAGCCAGGCCAGTGGGTTTCATTTACAAGGAGAGAG
GGAAGCTTGAAGCTGTCTATGTTGCTGGAGACAACCTCAGGAGCACTCTCCCTC

ACGCGTACGCGGCCGCTCGAGCAGAAACTCATCTCAGAAGAGGATCTGGCAGCAATGATATCCTGGATT
ACAAGGATGACGACGATAAGGTTAA



[View online »](#)

Protein Sequence: >RC210246 representing NM_006641
Red=Cloning site Green=Tags(s)

MTPTDFTSPIPNMADDYGSESTSSMEDYVNFNFTDFYCEKNNVRQFASHFLPPLYWLVFIVGALGNSLVI
 LVYWYCTRVKTMDFLLNLAIADLLFLVTLPFWAIAAADQWKQTFMCKVVNSMYKMNFYSCVLLIMCI
 SVDRYIAIAQAMRAHTWREKRLLYSKMVCFTIWLAAAALCIPEILYSQIKEESGIAICTMVYPSDESTKL
 KSAVLTCLKVILGFLLPFVVMACCYTIIHTLIQAKKSSKHKALKVTITVLTVFVLSQFPYNCILLVQTID
 AYAMFISNCAVSTNIDICFQVTQTIAFFHSCLNPLVYVYVGERFRDLVKTLKNLGCISQAQWVSFTRRE
 GSLKLSMLETTSGLSL

TRTRPLEQKLISEEDLAANDILDYKDDDDKV

Chromatograms: https://cdn.origene.com/chromatograms/mg2663_d01.zip

Restriction Sites: SgfI-MluI

Cloning Scheme:



ACCN: NM_006641

ORF Size: 1107 bp

OTI Disclaimer: The molecular sequence of this clone aligns with the gene accession number as a point of reference only. However, individual transcript sequences of the same gene can differ through naturally occurring variations (e.g. polymorphisms), each with its own valid existence. This clone is substantially in agreement with the reference, but a complete review of all prevailing variants is recommended prior to use. [More info](#)

OTI Annotation: This clone was engineered to express the complete ORF with an expression tag. Expression varies depending on the nature of the gene.

Components: The ORF clone is ion-exchange column purified and shipped in a 2D barcoded Matrix tube containing 10ug of transfection-ready, dried plasmid DNA (reconstitute with 100 ul of water).

Reconstitution Method:

1. Centrifuge at 5,000xg for 5min.
2. Carefully open the tube and add 100ul of sterile water to dissolve the DNA.
3. Close the tube and incubate for 10 minutes at room temperature.
4. Briefly vortex the tube and then do a quick spin (less than 5000xg) to concentrate the liquid at the bottom.
5. Store the suspended plasmid at -20°C. The DNA is stable for at least one year from date of shipping when stored at -20°C.

RefSeq: [NM_006641.1](#)

RefSeq Size: 2462 bp

RefSeq ORF: 1074 bp

Locus ID: 10803

UniProt ID: [P51686](#)

Cytogenetics: 3p21.31

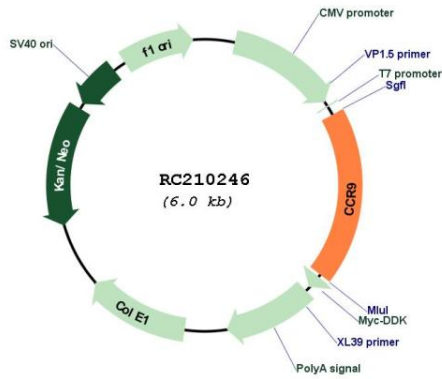
Protein Families: Druggable Genome, GPCR, Transmembrane

Protein Pathways: Chemokine signaling pathway, Cytokine-cytokine receptor interaction

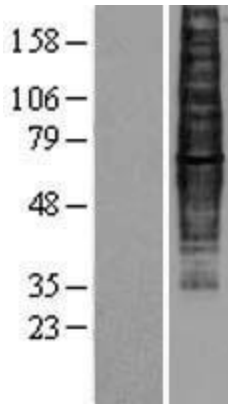
MW: 42.02 kDa

Gene Summary: The protein encoded by this gene is a G protein-coupled receptor with seven transmembrane domains that belongs to the beta chemokine receptor family. Chemokines and their receptors are key regulators of thymocyte migration and maturation in normal and inflammation conditions. This gene is differentially expressed in T lymphocytes of the small intestine and colon, and its interaction with chemokine 25 contributes to intestinal intra-epithelial lymphocyte homing to the small intestine. This suggests a role for this gene in directing immune responses to different segments of the gastrointestinal tract. This gene and its exclusive ligand, chemokine 25, are overexpressed in a variety of malignant tumors and are closely associated with tumor proliferation, apoptosis, invasion, migration and drug resistance. This gene maps to the chemokine receptor gene cluster. Multiple transcript variants encoding different isoforms have been found for this gene. [provided by RefSeq, Aug 2020]

Product images:



Circular map for RC210246



Western blot validation of overexpression lysate (Cat# [LY401987]) using anti-DDK antibody (Cat# [TA50011-100]). Left: Cell lysates from untransfected HEK293T cells; Right: Cell lysates from HEK293T cells transfected with RC210246 using transfection reagent MegaTran 2.0 (Cat# [TT210002]).