

Product datasheet for RC210243

NANOG (NM_024865) Human Tagged ORF Clone

Product data:

| | |
|---------------------------|---|
| Product Type: | Expression Plasmids |
| Product Name: | NANOG (NM_024865) Human Tagged ORF Clone |
| Tag: | Myc-DDK |
| Symbol: | NANOG |
| Mammalian Cell Selection: | Neomycin |
| Vector: | pCMV6-Entry (PS100001) |
| E. coli Selection: | Kanamycin (25 ug/mL) |
| ORF Nucleotide Sequence: | >RC210243 representing NM_024865 Red=Cloning site Blue=ORF Green=Tags(s) |

TTTTGTAATACGACTCACTATAGGGCGGCCGGAATTCGTCGACTGGATCCGGTACCGAGGAGATCTGCC
GCC**CGATCGCC**

ATGAGTGTGGATCCAGCTTGTCCCAAAGCTTGCCTTGTCTTTGAAGCATCCGACTGTAAAGAATCTTCAC
CTATGCCTGTGATTTGTGGGCCTGAAGAAAATATCCATCCTTGCAAATGTCTTCTGCTGAGATGCCTCA
CACAGAGACTGTCTCTCCTTCTCCTCCATGGATCTGCTTATTCAGGACAGCCCTGATTCTTCCACC
AGTCCCAAAGGCAAACAACCCACTTCTGCAGAGAATAGTGTGCAAAAAAGGAAGACAAGGTCCCGGTCA
AGAAACAGAAGACCAGAAGTGTCTCTTCCACCCAGCTGTGTACTCAATGATAGATTTCCAGAGACA
GAAATACCTCAGCTCCAGCAGATGCAAGAAGTCTCCAACATCCTGAACCTCAGCTACAAACAGGTGAAG
ACCTGGTTCCAGAACCAGAGAATGAAATCTAAGAGGTGGCAGAAAAACAAGTGGCCGAAGAATAGCAATG
GTGTGACGCAGAAGGCCTCAGCACCTACCTACCCAGCCTCTACTCTTCTACCACCAGGGATGCCTGGT
GAACCCGACTGGGAACCTTCCAATGTGGAGCAACCAGACCTGGAACAATTCAACCTGGAGCAACCAGACC
CAGAACATCCAGTCTGGAGCAACCCTCTGGAACACTCAGACCTGGTGCACCCAATCTGGAACAATC
AGGCCTGGAACAGTCCCTTCTAATACTGTGGAGAGGAATCTCTGCAGTCTGCATGCACTCCAGCCAAA
TTCTCCTGCCAGTGACTTGGAGGCTGCCTTGAAGCTGCTGGGAAGGCCTTAATGTAATACAGCAGACC
ACTAGGTATTTAGTACTCCACAACCATGGATTTATTCTAAACTACTCCATGAACATGCAACCTGAAG
ACGTG

ACGCGTACGCGGCCGCTCGAGCAGAAAAGTCTCTCAGAAGAGGATCTGGCAGCAAATGATATCCTGGATT
ACAAGGATGACGACGATAAGGTTTAA



[View online »](#)

Protein Sequence: >RC210243 representing NM_024865
Red=Cloning site Green=Tags(s)

MSVDPACQSLPCFEASDCKESSPMPVICGPEENYPQLQSSAEMPHETVSPLPSSMDLLIQDSPDSST
 SPKGGKQPTSAENSVAKKEDKVPVKKQKTRTVFSSSTQLCVLNDRFQRQKYLSQLQMQELSNILNLSYKQVK
 TWFQNRQMKSKRWQKNNWPKNNSNGVTQKASAPTYPSLYSSYHQGCLVNPTGNLPMWSNQTWNNSTWSNQ
 QNIQSWSNHSWNTQTWCTQSWNNQAWNSPFYNCGEEESLQSCMHFQPNSPASDLEAALEAAGEGLNVIQQT
 TRYFSTPQTMDFLNYSMMNPQEDV

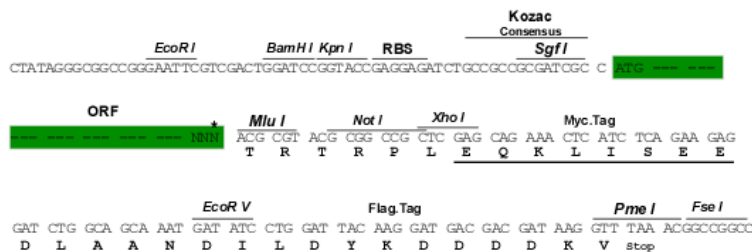
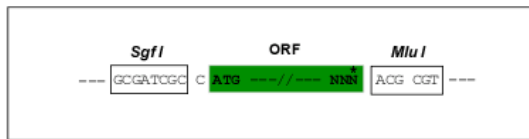
TRTRPLEQKLISEEDLAANDILDYKDDDDKV

Chromatograms: https://cdn.origene.com/chromatograms/mg2737_c09.zip

Restriction Sites: Sgfl-MluI

Cloning Scheme:

Cloning sites used for ORF Shuttling:



* The last codon before the Stop codon of the ORF

ACCN: NM_024865

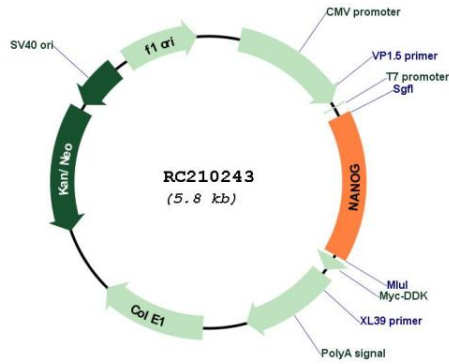
ORF Size: 915 bp

OTI Disclaimer: Due to the inherent nature of this plasmid, standard methods to replicate additional amounts of DNA in E. coli are highly likely to result in mutations and/or rearrangements. Therefore, OriGene does not guarantee the capability to replicate this plasmid DNA. Additional amounts of DNA can be purchased from OriGene with batch-specific, full-sequence verification at a reduced cost. Please contact our customer care team at custsupport@origene.com or by calling 301.340.3188 option 3 for pricing and delivery.

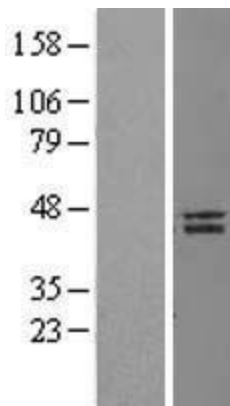
The molecular sequence of this clone aligns with the gene accession number as a point of reference only. However, individual transcript sequences of the same gene can differ through naturally occurring variations (e.g. polymorphisms), each with its own valid existence. This clone is substantially in agreement with the reference, but a complete review of all prevailing variants is recommended prior to use. [More info](#)

| | |
|-------------------------------|---|
| OTI Annotation: | This clone was engineered to express the complete ORF with an expression tag. Expression varies depending on the nature of the gene. |
| Components: | The ORF clone is ion-exchange column purified and shipped in a 2D barcoded Matrix tube containing 10ug of transfection-ready, dried plasmid DNA (reconstitute with 100 ul of water). |
| Reconstitution Method: | <ol style="list-style-type: none">1. Centrifuge at 5,000xg for 5min.2. Carefully open the tube and add 100ul of sterile water to dissolve the DNA.3. Close the tube and incubate for 10 minutes at room temperature.4. Briefly vortex the tube and then do a quick spin (less than 5000xg) to concentrate the liquid at the bottom.5. Store the suspended plasmid at -20°C. The DNA is stable for at least one year from date of shipping when stored at -20°C. |
| Note: | Plasmids are not sterile. For experiments where strict sterility is required, filtration with 0.22um filter is required. |
| RefSeq: | NM_024865.4 |
| RefSeq Size: | 2114 bp |
| RefSeq ORF: | 918 bp |
| Locus ID: | 79923 |
| UniProt ID: | Q9H9S0 |
| Cytogenetics: | 12p13.31 |
| Protein Families: | Cancer stem cells, Embryonic stem cells, ES Cell Differentiation/IPS, Induced pluripotent stem cells, Stem cell - Pluripotency |
| MW: | 34.4 kDa |
| Gene Summary: | The protein encoded by this gene is a DNA binding homeobox transcription factor involved in embryonic stem (ES) cell proliferation, renewal, and pluripotency. The encoded protein can block ES cell differentiation and can also autorepress its own expression in differentiating cells. Two transcript variants encoding different isoforms have been found for this gene. [provided by RefSeq, Sep 2015] |

Product images:



Circular map for RC210243



Western blot validation of overexpression lysate (Cat# [LY411030]) using anti-DDK antibody (Cat# [TA50011-100]). Left: Cell lysates from untransfected HEK293T cells; Right: Cell lysates from HEK293T cells transfected with RC210243 using transfection reagent MegaTran 2.0 (Cat# [TT210002]).