

## Product datasheet for RC210240

### 5HT1E Receptor (HTR1E) (NM\_000865) Human Tagged ORF Clone

#### Product data:

Product Type:	Expression Plasmids
Product Name:	5HT1E Receptor (HTR1E) (NM_000865) Human Tagged ORF Clone
Tag:	Myc-DDK
Symbol:	5HT1E Receptor
Synonyms:	5-HT1E
Mammalian Cell Selection:	Neomycin
Vector:	pCMV6-Entry (PS100001)
E. coli Selection:	Kanamycin (25 ug/mL)
ORF Nucleotide Sequence:	>RC210240 ORF sequence Red=Cloning site Blue=ORF Green=Tags(s)

TTTTGTAATACGACTCACTATAGGGCGCCGGGAATTCGTCGACTGGATCCGGTACCGAGGAGATCTGCC  
GCC**CGATCGCC**

ATGAACATCACAACTGTACCACAGAGGCCAGCATGGCTATAAGACCCAAGACCATCACTGAGAAGATGC  
TCATTTGCATGACTCTGGTGGTCATCACCACCCTCACCACGTTGCTGAACCTGGCTGTGATCATGGCTAT  
TGGCACCACCAAGAAGCTCCACCAGCCTGCCAACTACCTAATCTGTTCTCTGGCCGTGACGGACCTCCTG  
GTGGCAGTGCCTCATGCCCTGAGCATCATCTACATTGTCATGGATCGCTGGAAGCTTGGGTACTTCC  
TCTGTGAGGTGTGGCTGAGTGTGGACATGACCTGCTGCACCTGCTCCATCCTCCACCTCTGTGTCATTGC  
CCTGGACAGTACTGGGCCATCACAATGCTATTGAATACGCCAGGAAGAGGACGGCCAAGAGGGCCCGG  
CTGATGATCCTTACCGTCTGGACCATCTCCATTTTCATCTCCATGCCCTCTGTCTGGAGAAGCCACC  
GCCGCTAAGCCCTCCCCTAGTCAGTGCACCATCCAGCATGACCATGTTATCTACACCATTTACTCCAC  
GCTGGGTGCGTTTTATATCCCCTTGACTTTGATACTGATTCTCTATTACCGGATTTACCACGCGGCCAAG  
AGCCTTTACCAGAAAAGGGGATCAAGTCGGCACTTAAGCAACAGAAGCACAGATAGCCAGAATCTTTTG  
CAAGTTGTAACCTTACACAGACTTTCTGTGTGTGCTGACTTCTCCACCTCAGACCTACCACAGAGTTGA  
AAAGTTCCATGCCTCCATCAGGATCCCCCTTCGACAATGATCTAGATCACCCAGGAGAACGTCAGCAG  
ATCTCTAGCACCAGGGAACGGAAGGCAGCACGCATCCTGGGCTGATTCTGGGTGCATTTTATCCT  
GGCTGCCATTTTCATCAAAGAGTTGATTGTGGGTCTGAGCATCTACACCGTGTCTCGGAAGTGGCCGA  
CTTTCTGACGTGGCTCGTTATGTGAATCTCTGATCAACCTCTGCTCTATACGAGTTTTAATGAAGAC  
TTAAGCTGGCTTTTAAAAGCTCATTAGATGCCGAGAGCATACT

**ACGCGT**ACGCGGCCGCTCGAGCAGAACTCATCTCAGAAGAGGATCTGGCAGCAATGATATCCTGGATT  
ACAAGGATGACGACGATAAGGTTAA



[View online »](#)



**Reconstitution Method:**

1. Centrifuge at 5,000xg for 5min.
2. Carefully open the tube and add 100ul of sterile water to dissolve the DNA.
3. Close the tube and incubate for 10 minutes at room temperature.
4. Briefly vortex the tube and then do a quick spin (less than 5000xg) to concentrate the liquid at the bottom.
5. Store the suspended plasmid at -20°C. The DNA is stable for at least one year from date of shipping when stored at -20°C.

**RefSeq:** [NM\\_000865.3](#)

**RefSeq Size:** 2067 bp

**RefSeq ORF:** 1098 bp

**Locus ID:** 3354

**UniProt ID:** [P28566](#)

**Cytogenetics:** 6q14.3

**Domains:** 7tm\_1

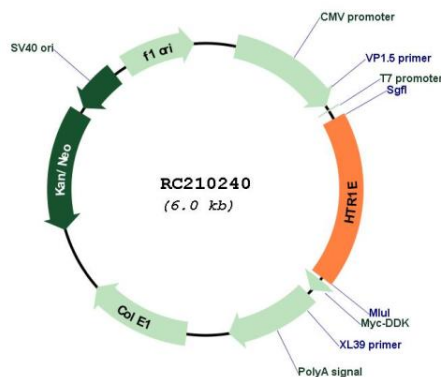
**Protein Families:** Druggable Genome, GPCR, Transmembrane

**Protein Pathways:** Neuroactive ligand-receptor interaction

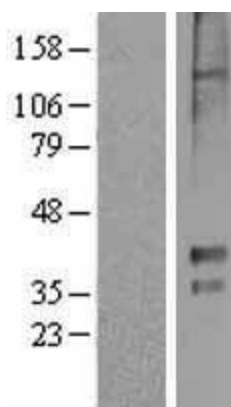
**MW:** 41.7 kDa

**Gene Summary:** G-protein coupled receptor for 5-hydroxytryptamine (serotonin). Also functions as a receptor for various alkaloids and psychoactive substances. Ligand binding causes a conformation change that triggers signaling via guanine nucleotide-binding proteins (G proteins) and modulates the activity of down-stream effectors, such as adenylate cyclase. Signaling inhibits adenylate cyclase activity.[UniProtKB/Swiss-Prot Function]

### Product images:



Circular map for RC210240



Western blot validation of overexpression lysate (Cat# [LY424479]) using anti-DDK antibody (Cat# [TA50011-100]). Left: Cell lysates from untransfected HEK293T cells; Right: Cell lysates from HEK293T cells transfected with RC210240 using transfection reagent MegaTran 2.0 (Cat# [TT210002]).