

Product datasheet for **RC210239**

RPA4 (NM_013347) Human Tagged ORF Clone

Product data:

Product Type:	Expression Plasmids
Product Name:	RPA4 (NM_013347) Human Tagged ORF Clone
Tag:	Myc-DDK
Symbol:	RPA4
Synonyms:	HSU24186
Mammalian Cell Selection:	Neomycin
Vector:	pCMV6-Entry (PS100001)
E. coli Selection:	Kanamycin (25 ug/mL)
ORF Nucleotide Sequence:	>RC210239 ORF sequence Red=Cloning site Blue=ORF Green=Tags(s)

TTTTGTAATACGACTCACTATAGGGCGGCCGGAATTCGTCGACTGGATCCGGTACCGAGGAGATCTGCC
GCC**CGATCGC**C

ATGAGTAAGAGTGGGTTGGGAGCTATGGCAGCATTTCTGCTGCTGATGGAGCGAGTGGAGGCAGTGACC
AACTGTGTGAGAGAGATGCAACTCCTGCTATTAAGACCCAAAGACCTAAGGTCCGAATTCAGGACGTTGT
ACCGTGTAAATGTAACCAGCTTCTCAGCTCTACTGTGTTGACCCTGTGTTCAAGTTAGGGGAATTATA
GTTTCCCAGGTCTCCATCGTGGGGTAATCAGAGGGGCAGAGAAGGCTTCAAATCACATTTGTTACAAAA
TTGATGATATGACCGCGAAACCAATCGAGGCCGACAGTGGTTTGGTAGAGAGAAAGTCAAGCAGGTGAC
TCCATTGTCAGTCGGAGTATATGTCAAAGTGTGGTATCCTCAAATGTCCCACGGGAACAAAGAGCCTT
GAGGTATTGAAAATTCATGTCCTAGAGGACATGAACGAGTTCACCGTGATATTCTGAAAACGGTCAATG
CACACATGATGCTGGATAAAGCCCGTCGTGATACCACTGTAGAAAGTGTGCCTGTGTCTCCATCAGAAGT
GAATGATGCTGGGGATAACGATGAGAGTCACCGCAATTCATCCAGGACGAAGTGTGCTTGGATTGATT
GAGTGTCTCATCAGGAAGGGAAGAGCATCCATGAGCTCCGGGCTCAGCTCTGCGACCTTAGCGTCAAGG
CCATCAAGGAAGCGATTGATTATCTGACCGTTGAGGGCCACATCTATCCCACTGTGGATCGGGAGCATT
TAAGTCTGCTGAT

ACGCGTACGCGGCCGCTCGAGCAGAAACTCATCTCAGAAGAGGATCTGGCAGCAAATGATATCCTGGATT
ACAAGGATGACGACGATAAGGTTTAA



[View online »](#)

Protein Sequence: >RC210239 protein sequence
Red=Cloning site Green=Tags(s)

MSKSGFGSYGSISAADGASGGSDQLCERDATPAIKTQRPKVRIQDVVPCNVNQLLSSVFDVPVFKVIRGII
 VSQVSIIVGIRGAEKASNHICYKIDDMTAKPIEARQWFGREKVKVQTPLSVGVYVKVFGILKCPTGTKSL
 EVLKIHVLEDMNEFTVHILETVNAHMMLDKARRDTTVESVPVSPSEVNDAGDNDESHRNF IQDEVLRLLIH
 ECPHQEGKSIHELRAQLCDLSVKAIKEAIDYLTVEGHIYPTVDREHFKSAD

TRTRPLEQKLISEEDLAANDILDYKDDDDKV

Chromatograms: https://cdn.origene.com/chromatograms/mk6582_h01.zip

Restriction Sites: SgfI-MluI

Cloning Scheme:

Cloning sites used for ORF Shuttling:



* The last codon before the Stop codon of the ORF

ACCN: NM_013347

ORF Size: 783 bp

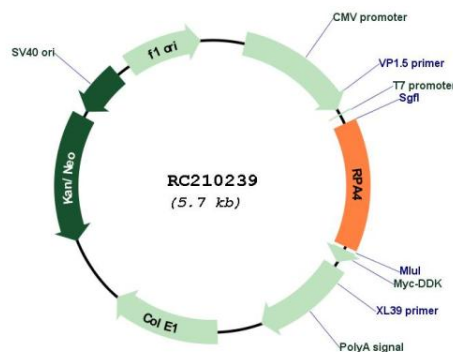
OTI Disclaimer: The molecular sequence of this clone aligns with the gene accession number as a point of reference only. However, individual transcript sequences of the same gene can differ through naturally occurring variations (e.g. polymorphisms), each with its own valid existence. This clone is substantially in agreement with the reference, but a complete review of all prevailing variants is recommended prior to use. [More info](#)

OTI Annotation: This clone was engineered to express the complete ORF with an expression tag. Expression varies depending on the nature of the gene.

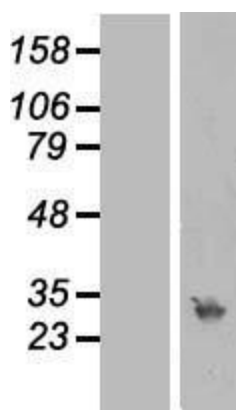
Components: The ORF clone is ion-exchange column purified and shipped in a 2D barcoded Matrix tube containing 10ug of transfection-ready, dried plasmid DNA (reconstitute with 100 ul of water).

Reconstitution Method:	<ol style="list-style-type: none">1. Centrifuge at 5,000xg for 5min.2. Carefully open the tube and add 100ul of sterile water to dissolve the DNA.3. Close the tube and incubate for 10 minutes at room temperature.4. Briefly vortex the tube and then do a quick spin (less than 5000xg) to concentrate the liquid at the bottom.5. Store the suspended plasmid at -20°C. The DNA is stable for at least one year from date of shipping when stored at -20°C.
RefSeq:	NM_013347.4 , NP_037479.1
RefSeq Size:	1560 bp
RefSeq ORF:	786 bp
Locus ID:	29935
UniProt ID:	Q13156
Cytogenetics:	Xq21.33
Protein Families:	Druggable Genome
Protein Pathways:	DNA replication, Homologous recombination, Mismatch repair, Nucleotide excision repair
MW:	28.9 kDa
Gene Summary:	This gene encodes a single-stranded DNA-binding protein that is the 30-kDa subunit of the replication protein A complex. Replication protein A is an essential factor for DNA double-strand break repair and cell cycle checkpoint activation. The encoded protein localizes to DNA repair foci and may be involved in the cellular DNA damage response. This protein may also play a role in inhibiting viral replication.[provided by RefSeq, Apr 2010]

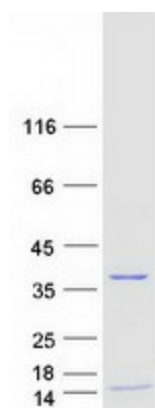
Product images:



Circular map for RC210239



Western blot validation of overexpression lysate (Cat# [LY415651]) using anti-DDK antibody (Cat# [TA50011-100]). Left: Cell lysates from untransfected HEK293T cells; Right: Cell lysates from HEK293T cells transfected with RC210239 using transfection reagent MegaTran 2.0 (Cat# [TT210002]).



Coomassie blue staining of purified RPA4 protein (Cat# [TP310239]). The protein was produced from HEK293T cells transfected with RPA4 cDNA clone (Cat# RC210239) using MegaTran 2.0 (Cat# [TT210002]).