

Product datasheet for RC210238

Fetuin B (FETUB) (NM_014375) Human Tagged ORF Clone

Product data:

Product Type:	Expression Plasmids
Product Name:	Fetuin B (FETUB) (NM_014375) Human Tagged ORF Clone
Tag:	Myc-DDK
Symbol:	Fetuin B
Synonyms:	16G2; Gugu; IRL685
Mammalian Cell Selection:	Neomycin
Vector:	pCMV6-Entry (PS100001)
E. coli Selection:	Kanamycin (25 ug/mL)
ORF Nucleotide Sequence:	>RC210238 representing NM_014375 Red=Cloning site Blue=ORF Green=Tags(s)

TTTTGTAATACGACTCACTATAGGGCGGCCGGAATTCGTCGACTGGATCCGGTACCGAGGAGATCTGCC
GCC**CGATCGCC**

ATGGGTCTGCTCCTTCCCTGGCACTCTGCATCCTAGTCTGTGCTGCGGAGCAATGTCTCCACCCAGC
TGGCCCTCAACCCTCGGCTCTGCTCTCCGGGGCTGCAATGACTCAGATGTGCTGGCAGTTGCAGGCTT
TGCCCTGCGGGATTAACAAAGACAGAAAGGATGGCTATGTGCTGAGACTCAACCGAGTGAACGACGCC
CAGGAATACAGACGGGTGGCCTGGGATCTCTGTTCTATCTTACACTGGATGTGCTAGAGACTGACTGCC
ATGTGCTCAGAAAGAAGGCATGGCAAGACTGTGGAATGAGGATATTTTTGAATCAGTTTATGGTCAATG
CAAAGCAATATTTATATGAACAACCCAAGTAGAGTTCTCTATTTAGCTGCTTATAACTGTACTCTTCGC
CCAGTTTTCAAAAAAAGATTTACATGACGTGCCCTGACTGCCCAAGCTCCATACCCACTGACTCTTCCA
ATCACCAAGTGTGGAGGCTGCCACCGAGTCTCTTGCAGAAATACAACAATGAGAACACATCCAAGCAGTA
TTCTCTCTTCAAAGTACCAGGGCTTCTAGCCAGTGGGTGGTCCGGCCCTTCTTACTTTGTGGAATACTTA
ATTAAGAATCACCATGTAATAATCCCAGGCCAGCAGCTGTTCACTTCAGTCTCCGACTCTGTGCCTG
TTGGTCTTTGCAAAGTTCTCTGACTCGAACACACTGGGAAAAGTTTGTCTCTGTGACTTGTGACTTCTT
TGAATCACAGGCTCCAGCCACTGGAAGTGAAAACCTCTGCTGTTAACAGAAAACCTACAAAACCTTCCCAAG
GTGGAAGAATCCCAGCAGAAAAACCCCCCAACAGACTCCCCCTCAAAGCTGGGCAAGAGGATCTG
TCCAATATCTTCTGACTTGGATGATAAAAATCCCAGGAAAAGGCCCTCAGGAGGCCCTTCTGTGCA
TCTGGACCTAACACGAATCCCCAGGGAGAAAACCTGGATATTTCTTCTCTTCTGAGCCTATGGAG
GAGAAGCTGGTGGTCTGCCTTTCCCCAAGAAAAGCACGCACTGCTGAGTGCCAGGGCCAGCCAGA
ATGCCAGCCCTTGTCTTCCGCCA

ACGGTACGGGCCGCTCGAGCAGAACTCATCTCAGAAGAGGATCTGGCAGCAATGATATCTGGATT
ACAAGGATGACGACGATAAGGTTTAA



[View online »](#)

Protein Sequence: >RC210238 representing NM_014375
Red=Cloning site Green=Tags(s)

MGLLLPLALCILVLCGAMSPQLALNPSALLSRGCNDSVDLAVAGFALRDINKDRKDGYYLRLNRVND
 QEYRRGGLGSLFYLTLDVLETDCHVLRKKAWQDCGMRIFFESVYGQCKAIFYMNNPSRVL YLAAYNCTLR
 PVSKKKIYMTCPDCPSSIPTDSSNHQVLEAATESLAKYNNENTSQYSLFKVTRASSQWVVGPSYFVEYL
 IKESPTKTSQASSCSLQSSDSVPVGLCKGSLTRTHWEKFVSVTCDFEFESQAPATGSENSAVNQKPTNLPK
 VEESQKNTPTDSPSKAGPRGSVQYLPDLDDKNSQEKGPQEAFPVHLDLTTNPQGETLDISFLFLEPME
 EKLVLVLPFPKEKARTAECPGPAQNASPLVLP

TRTRPLEQKLISEEDLAANDILDYKDDDDKV

Chromatograms: https://cdn.origene.com/chromatograms/mk8114_d04.zip

Restriction Sites: SgfI-MluI

Cloning Scheme:



ACCN: NM_014375

ORF Size: 1146 bp

OTI Disclaimer: The molecular sequence of this clone aligns with the gene accession number as a point of reference only. However, individual transcript sequences of the same gene can differ through naturally occurring variations (e.g. polymorphisms), each with its own valid existence. This clone is substantially in agreement with the reference, but a complete review of all prevailing variants is recommended prior to use. [More info](#)

OTI Annotation: This clone was engineered to express the complete ORF with an expression tag. Expression varies depending on the nature of the gene.

Components: The ORF clone is ion-exchange column purified and shipped in a 2D barcoded Matrix tube containing 10ug of transfection-ready, dried plasmid DNA (reconstitute with 100 ul of water).

Reconstitution Method:

1. Centrifuge at 5,000xg for 5min.
2. Carefully open the tube and add 100ul of sterile water to dissolve the DNA.
3. Close the tube and incubate for 10 minutes at room temperature.
4. Briefly vortex the tube and then do a quick spin (less than 5000xg) to concentrate the liquid at the bottom.
5. Store the suspended plasmid at -20°C. The DNA is stable for at least one year from date of shipping when stored at -20°C.

RefSeq: [NM_014375.3](#)

RefSeq Size: 1640 bp

RefSeq ORF: 1149 bp

Locus ID: 26998

UniProt ID: [Q9UGM5](#)

Cytogenetics: 3q27.3

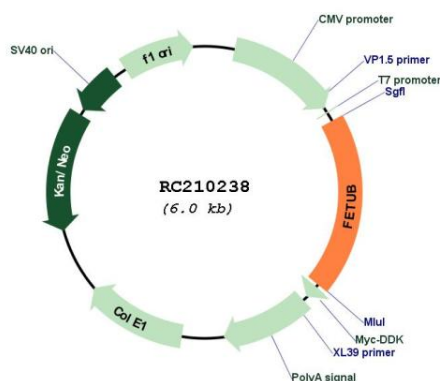
Domains: CY

Protein Families: Secreted Protein

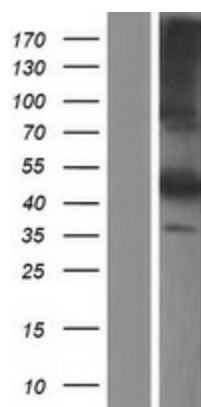
MW: 41.9 kDa

Gene Summary: The protein encoded by this gene is a member of the fetuin family, part of the cystatin superfamily of cysteine protease inhibitors. Fetuins have been implicated in several diverse functions, including osteogenesis and bone resorption, regulation of the insulin and hepatocyte growth factor receptors, and response to systemic inflammation. This protein may be secreted by cells. [provided by RefSeq, Jul 2008]

Product images:



Circular map for RC210238



Western blot validation of overexpression lysate (Cat# [LY415320]) using anti-DDK antibody (Cat# [TA50011-100]). Left: Cell lysates from untransfected HEK293T cells; Right: Cell lysates from HEK293T cells transfected with RC210238 using transfection reagent MegaTran 2.0 (Cat# [TT210002]).