

Product datasheet for **RC210237**

MAGEB3 (NM_002365) Human Tagged ORF Clone

Product data:

Product Type: Expression Plasmids
Product Name: MAGEB3 (NM_002365) Human Tagged ORF Clone
Tag: Myc-DDK
Symbol: MAGEB3
Synonyms: CT3.5
Mammalian Cell Selection: Neomycin
Vector: pCMV6-Entry (PS100001)
E. coli Selection: Kanamycin (25 ug/mL)
ORF Nucleotide Sequence: >RC210237 ORF sequence
Red=Cloning site Blue=ORF Green=Tags(s)

TTTTGTAATACGACTCACTATAGGGCGGCCGGAATTCGTCGACTGGATCCGGTACCGAGGAGATCTGCC
GCC**CGCATCGCC**

ATGCCTCGGGGTCAGAAGGTACGCTCCATGCACGTGAGAAACGCCAGCAGACCCGGGTCAGACCCAGG
ATCACCAGGGTGCTCAGATCACTGCAACTAACAGAAAAAGTATCCTTTTCATCCCTCTTATTTTGGG
GGCTACTATCCAGAAAAAGTCTGCTGGTAGGTCACGTAGTGTCTCAAGAAGCCTCAGAGAGCACTATCC
ACCACTACATCTGTAGATGTTTCTTACAAAAAGTCATACAAGGGAGCCAAACAGCAAAATTGAGAAAAAGC
AAAGCTTCTCTCAGGGTCTATCCTCCACTGTGCAGTCTCGCACAGACCCTAATCATGAAGACAAATAT
GTTGGTGCAGTTCCTGATGGAAATGTACAAGATGAAAAAGCCATTATGAAAGCAGATATGCTAAAAATT
GTCCAAAAAGCCATAAGAATTGCTTCCCTGAGATCCTTAAAAAGCTTCTTTCAACATGGAGGTGGTAT
TTGGTGTGATTTAAAGAAAGTTGATTCTACCAAGGACTCCTATGTCCTTGTGAGCAAAATGGATCTCCC
CAACAATGGGACAGTGACTCGTGGGAGGGGATTCCCAAGACAGGTCTCCTGCTGAATCTCCTGGGCGTG
ATCTTCATGAAGGGCAACTGTGCCACTGAGGAGAAGATCTGGGAATTCCTGAATAAGATGAGAATATATG
ATGGGAAGAAACACTTCATATTTGGGGAGCCAGAAAGCTCATCACCCAAGATTTGGTGAAGCTTAAATA
CCTGGAGTACCGACAAGTGCCCAACAGTAATCCTGCACGCTATGAATTCCTGTGGGTCCAAGAGCCCAT
GCTGAAACCAGCAAGATGAAGGTCTGGAGTTTGGGCCAAGGTCAATAAACTGTCCCAAGTGCAGTCC
AGTTCTGGTATGAAGAGGCTTTGAGAGATGAGGAAGAAAGAGTCCAAGCTGCAGCTATGCTCAATGATGG
CAGTAGTGCCATGGGCAGAAAGTGTCCAAAGCCAAGGCTAGCAGCTCTCCACGCC

ACGCGTACGCGGCCGCTCGAGCAGAAACTCATCTCAGAAGAGGATCTGGCAGCAATGATATCCTGGATT
ACAAGGATGACGACGATAAGGTTTAA



[View online »](#)

Protein Sequence: >RC210237 protein sequence
Red=Cloning site Green=Tags(s)

MPRGQKSTLHAREKRQQTRGQTQDHQGAQITATNKKKVSFSSPLILGATIQKKSAGRSRSSALKKPQRALS
 TTTSVDVSYKKSYPKANSKIEKKQSFSQLSSTVQSRDPLIMKTNMLVQFLMEMYKMKKPKIMKADMLKI
 VQKSHKNCPEILKKASFNMEVVFVDLKKVDSTKDSYVLVSKMDLPNNGTVTRGRGFPKGTGLLLNLLGV
 IFMKGNCAATEEKIWEFLNKMRIYDGKKHFIFGEPRKLITQDLVKLKYLEYRQVPNSNPARYEFLWGPRAH
 AETSKMKVLEFWAKVNKTVPFAQFWYEEALRDEEERVQAAAMLNDGSSAMGRKCSKAKASSSSHA

TRTRPLEQKLISEEDLAANDILDYKDDDDKV

Chromatograms: https://cdn.origene.com/chromatograms/mk6270_g08.zip

Restriction Sites: SgfI-MluI

Cloning Scheme:



ACCN: NM_002365

ORF Size: 1038 bp

OTI Disclaimer: The molecular sequence of this clone aligns with the gene accession number as a point of reference only. However, individual transcript sequences of the same gene can differ through naturally occurring variations (e.g. polymorphisms), each with its own valid existence. This clone is substantially in agreement with the reference, but a complete review of all prevailing variants is recommended prior to use. [More info](#)

OTI Annotation: This clone was engineered to express the complete ORF with an expression tag. Expression varies depending on the nature of the gene.

Components: The ORF clone is ion-exchange column purified and shipped in a 2D barcoded Matrix tube containing 10ug of transfection-ready, dried plasmid DNA (reconstitute with 100 ul of water).

Reconstitution Method:

1. Centrifuge at 5,000xg for 5min.
2. Carefully open the tube and add 100ul of sterile water to dissolve the DNA.
3. Close the tube and incubate for 10 minutes at room temperature.
4. Briefly vortex the tube and then do a quick spin (less than 5000xg) to concentrate the liquid at the bottom.
5. Store the suspended plasmid at -20°C. The DNA is stable for at least one year from date of shipping when stored at -20°C.

Note: Plasmids are not sterile. For experiments where strict sterility is required, filtration with 0.22um filter is required.

RefSeq: [NM_002365.4](#)

RefSeq Size: 2310 bp

RefSeq ORF: 1041 bp

Locus ID: 4114

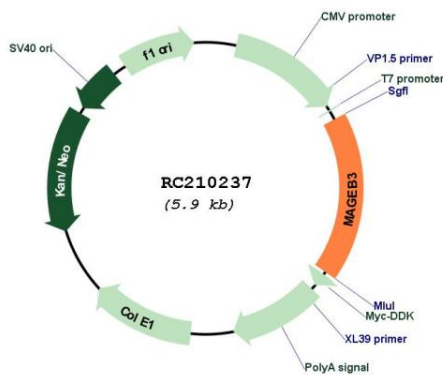
UniProt ID: [O15480](#)

Cytogenetics: Xp21.2

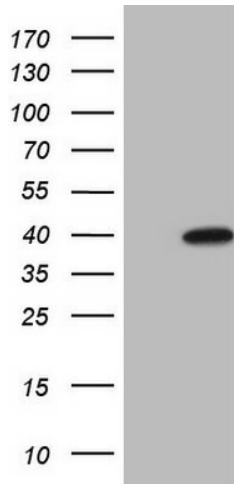
MW: 39.2 kDa

Gene Summary: This gene is a MAGE-B subfamily member of the MAGE gene family. MAGE family member proteins direct the expression of tumor antigens recognized on a human melanoma by autologous cytolytic T lymphocytes. There are two known clusters of MAGE genes on chromosome X. The members of the MAGE-A subfamily are located in the Xq28 region, while the members of the MAGE-B subfamily are clustered in the Xp21 region. [provided by RefSeq, Jul 2008]

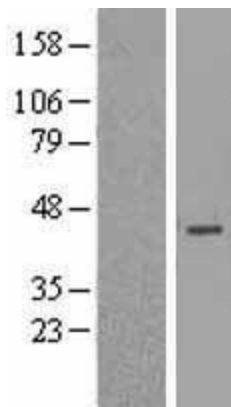
Product images:



Circular map for RC210237



HEK293T cells were transfected with the pCMV6-ENTRY control (Cat# [PS100001], Left lane) or pCMV6-ENTRY MAGEB3 (Cat# RC210237, Right lane) cDNA for 48 hrs and lysed. Equivalent amounts of cell lysates (5 ug per lane) were separated by SDS-PAGE and immunoblotted with anti-MAGEB3 (Cat# [TA808750])(1:2000). Positive lysates [LY419378] (100ug) and [LC419378] (20ug) can be purchased separately from OriGene.



Western blot validation of overexpression lysate (Cat# [LY419378]) using anti-DDK antibody (Cat# [TA50011-100]). Left: Cell lysates from untransfected HEK293T cells; Right: Cell lysates from HEK293T cells transfected with RC210237 using transfection reagent MegaTran 2.0 (Cat# [TT210002]).