

## Product datasheet for RC210236

### RGS8 (NM\_033345) Human Tagged ORF Clone

#### Product data:

Product Type: Expression Plasmids  
 Product Name: RGS8 (NM\_033345) Human Tagged ORF Clone  
 Tag: Myc-DDK  
 Symbol: RGS8  
 Mammalian Cell Selection: Neomycin  
 Vector: pCMV6-Entry (PS100001)  
 E. coli Selection: Kanamycin (25 ug/mL)  
 ORF Nucleotide Sequence: >RC210236 ORF sequence  
 Red=Cloning site Blue=ORF Green=Tags(s)

TTTTGTAATACGACTCACTATAGGGCGGCCGGAATTCGTCGACTGGATCCGGTACCGAGGAGATCTGCC  
 GCC**CGATCGCC**

ATGTGGAACACCTTAACCCGAAGCCTCTCTGACCATCCAGTTGGCAAAGACCCTCAGGCCATGAGGACTG  
 GCCAAAGACAGAACAAAGGGATGAGGACTCGACTGGGATGCCTGTCTCACAAGTCAGACTCGTGTAGTGA  
 TTTCACAGCTATCTTCCAGACAAACCAACCGCGCTCTCAAGAGATTATCGACAGAAGAAGCTACGAGG  
 TGGGCAGATTCCTTTGTGTGCTTCTCTCATAAGTATGGGGTGGCTGCATTCCGTGCCCTCTTGAAGA  
 CGGAGTTCAGTGAGGAGAACCTGGAATCTGGTTGGCCTGTGAGGAGTTCAAGAAGACCAGTCCACTGC  
 AAAATCTGCTCTAAGGCCATAGGATCTTTGAGGAGTTTGTGGATGTGCAGGCTCCACGGAGGTA AAC  
 ATTGACTTCCAGACCCGAGAAGCCACGAGGAAGAACCTGCAGGAGCCATCCCTGACTTGCTTTGACCAAG  
 CCCAAGGAAAAGTACACAGCCTCATGGAGAAAGACTCTTACCCAGGTTCTGAGGTCCAAAATGTACTT  
 AGATCTGCTGTCCCAAAGCCAGAGGAGGCTCAGT

**ACGCGT**ACGCGGCCGCTCGAGCAGAAACTCATCTCAGAAGAGGATCTGGCAGCAATGATATCCTGGATT  
 ACAAGGATGACGACGATAAGGTTTAA

Protein Sequence: >RC210236 protein sequence  
 Red=Cloning site Green=Tags(s)

MWNTLTRSLSDHPVGGKDPQAMRTGQRQNKGMRTLRGCLSHKSDSCSDFTAILPDKPNRALKRLSTEEATR  
 WADSFVLLSHKYGVAAFRAFLKTEFSEENLEFWLACEEFKTRSTAKLVSKAHRIFEEFVDVQAPREVN  
 IDFQTREATRKNLQEPSLTCFDQAQGVHSLMEKDSYPRFLRSKMYLDLLSQSQRRLS

**TR**TRPLEQKLI SEEDLAANDILDYKDDDDKV

Chromatograms: [https://cdn.origene.com/chromatograms/mk6268\\_a10.zip](https://cdn.origene.com/chromatograms/mk6268_a10.zip)



[View online »](#)

Restriction Sites: SgfI-MluI

Cloning Scheme:



ACCN: NM\_033345

ORF Size: 594 bp

OTI Disclaimer: The molecular sequence of this clone aligns with the gene accession number as a point of reference only. However, individual transcript sequences of the same gene can differ through naturally occurring variations (e.g. polymorphisms), each with its own valid existence. This clone is substantially in agreement with the reference, but a complete review of all prevailing variants is recommended prior to use. [More info](#)

OTI Annotation: This clone was engineered to express the complete ORF with an expression tag. Expression varies depending on the nature of the gene.

Components: The ORF clone is ion-exchange column purified and shipped in a 2D barcoded Matrix tube containing 10ug of transfection-ready, dried plasmid DNA (reconstitute with 100 ul of water).

- Reconstitution Method:
1. Centrifuge at 5,000xg for 5min.
  2. Carefully open the tube and add 100ul of sterile water to dissolve the DNA.
  3. Close the tube and incubate for 10 minutes at room temperature.
  4. Briefly vortex the tube and then do a quick spin (less than 5000xg) to concentrate the liquid at the bottom.
  5. Store the suspended plasmid at -20°C. The DNA is stable for at least one year from date of shipping when stored at -20°C.

RefSeq: [NM\\_033345.3](#)

RefSeq Size: 783 bp

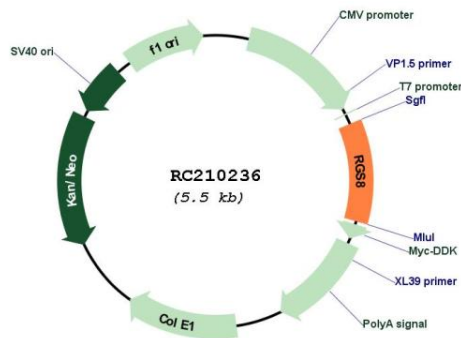
RefSeq ORF: 597 bp

Locus ID: 85397

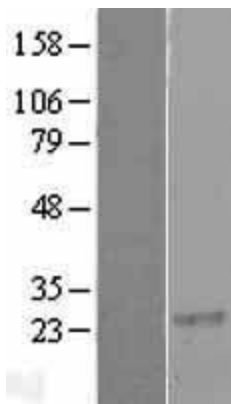
UniProt ID: [P57771](#)

<b>Cytogenetics:</b>	1q25.3
<b>Domains:</b>	RGS
<b>Protein Families:</b>	Druggable Genome
<b>MW:</b>	23 kDa
<b>Gene Summary:</b>	This gene is a member of the regulator of G protein signaling (RGS) family and encodes a protein with a single RGS domain. Regulator of G protein signaling (RGS) proteins are regulatory and structural components of G protein-coupled receptor complexes. They accelerate transit through the cycle of GTP binding and hydrolysis to GDP, thereby terminating signal transduction, but paradoxically, also accelerate receptor-stimulated activation. [provided by RefSeq, Jul 2008]

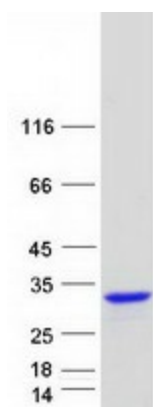
**Product images:**



Circular map for RC210236



Western blot validation of overexpression lysate (Cat# [LY409583]) using anti-DDK antibody (Cat# [TA50011-100]). Left: Cell lysates from untransfected HEK293T cells; Right: Cell lysates from HEK293T cells transfected with RC210236 using transfection reagent MegaTran 2.0 (Cat# [TT210002]).



Coomassie blue staining of purified RGS8 protein (Cat# [TP310236]). The protein was produced from HEK293T cells transfected with RGS8 cDNA clone (Cat# RC210236) using MegaTran 2.0 (Cat# [TT210002]).