

## Product datasheet for **RC210232**

### CCDC70 (NM\_031290) Human Tagged ORF Clone

#### Product data:

**Product Type:** Expression Plasmids  
**Product Name:** CCDC70 (NM\_031290) Human Tagged ORF Clone  
**Tag:** Myc-DDK  
**Symbol:** CCDC70  
**Mammalian Cell Selection:** Neomycin  
**Vector:** pCMV6-Entry (PS100001)  
**E. coli Selection:** Kanamycin (25 ug/mL)  
**ORF Nucleotide Sequence:** >RC210232 ORF sequence  
 Red=Cloning site Blue=ORF Green=Tags(s)

TTTTGTAATACGACTCACTATAGGGCGGCCGGAATTCGTCGACTGGATCCGGTACCGAGGAGATCTGCC  
 GCC**CGATCGCC**

ATGGCCACCCCGCCATTCCGGCTGATAAGGAAGATGTTTTCTTCAAGGTGAGCAGATGGATGGGGCTTG  
 CCTGCTCCGGTCCCTGGCGGCATCCTCTCCAGTATTCGCCAGAAGAACTAATGCACAAGCTGCAGGA  
 GGAAAAGGCTTTTCGCGAAGAGATGAAAATTTTCGTGAAAAATAGAGGACTTCAGGGAAGAGATGTGG  
 ACTTTCCGAGGCAAGATCCATGCTTTCCGGGCCAGATCCTGGTTTTGGGAAGAGGAGACCTTTCT  
 GGAAGAGGAGAAAACCTTCTGGAAAGAGGAAAAATCCTTCTGGGAAATGGAAAAGTCTTTCAGGGAGGA  
 AGAGAAAACCTTTCTGAAAAAGTACCGCACTTTCTGGAAGGAGGATAAGGCCCTTCTGAAAAGAGGACAAT  
 GCCTTATGGGAAAGAGACCGGAACCTTCTCAGGAGGACAAGGCCCTGTGGGAGGAAGAAAAGGCCCTGT  
 GGGTAGAGGAAAGAGCCCTCCTTGAGGGGGAGAAAGCCCTGTGGGAAGATAAACGTCCTCTGGGAGGA  
 AGAGAATGCCCTCTGGGAGGAAGAGAGGGCCTTCTGGATGGAGAACAATGGCCACATTGCCGGAGAGCAG  
 ATGCTCGAAGATGGGCCCCACAACGCCAACAGAGGGCAGCGCTTGCTGGCCTTCTCCGAGGCAGGGCG

**ACGCGT**ACGCGGCCGCTCGAGCAGAACTCATCTCAGAAGAGGATCTGGCAGCAATGATATCTGGATT  
 ACAAGGATGACGACGATAAGGTTTAA

**Protein Sequence:** >RC210232 protein sequence  
 Red=Cloning site Green=Tags(s)

MATPPFRLIRKMFSEKVSRRWMLACFRSLAASSPSIRQKLMHKLQEEKAFREEMKIFREKIEDFREEMW  
 TFRGKIHFARGQILGFWEERPFWEKTFWKEEKSFWEKSFREEKTFWKYRFTWKEDKAFWKEDN  
 ALWERDRNLLQEDKALWEEKALWVEERALLEGEKALWEDKTSLWEEENALWEEERAFWMENNGHIAGEQ  
 MLEDGPHNANRGQRLLAFSRGRA

**TR**TRPLEQKLISEEDLAANDILDYKDDDDKV



**Chromatograms:** [https://cdn.origene.com/chromatograms/mk6376\\_d02.zip](https://cdn.origene.com/chromatograms/mk6376_d02.zip)

**Restriction Sites:** SgfI-MluI

**Cloning Scheme:**



**ACCN:** NM\_031290

**ORF Size:** 699 bp

**OTI Disclaimer:** The molecular sequence of this clone aligns with the gene accession number as a point of reference only. However, individual transcript sequences of the same gene can differ through naturally occurring variations (e.g. polymorphisms), each with its own valid existence. This clone is substantially in agreement with the reference, but a complete review of all prevailing variants is recommended prior to use. [More info](#)

**OTI Annotation:** This clone was engineered to express the complete ORF with an expression tag. Expression varies depending on the nature of the gene.

**Components:** The ORF clone is ion-exchange column purified and shipped in a 2D barcoded Matrix tube containing 10ug of transfection-ready, dried plasmid DNA (reconstitute with 100 ul of water).

**Reconstitution Method:**

1. Centrifuge at 5,000xg for 5min.
2. Carefully open the tube and add 100ul of sterile water to dissolve the DNA.
3. Close the tube and incubate for 10 minutes at room temperature.
4. Briefly vortex the tube and then do a quick spin (less than 5000xg) to concentrate the liquid at the bottom.
5. Store the suspended plasmid at -20°C. The DNA is stable for at least one year from date of shipping when stored at -20°C.

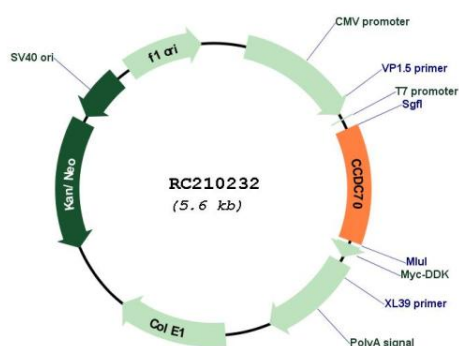
**RefSeq:** [NM\\_031290.3](#)

**RefSeq Size:** 1163 bp

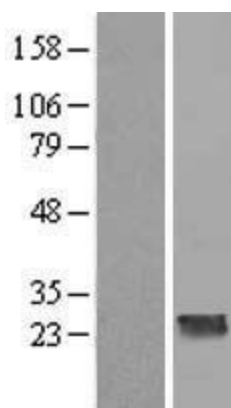
**RefSeq ORF:** 669 bp

**Locus ID:** 83446

**UniProt ID:** Q6NSX1  
**Cytogenetics:** 13q14.3  
**Protein Families:** Secreted Protein  
**MW:** 28.8 kDa

**Product images:**


Circular map for RC210232



Western blot validation of overexpression lysate (Cat# [LY410564]) using anti-DDK antibody (Cat# [TA50011-100]). Left: Cell lysates from untransfected HEK293T cells; Right: Cell lysates from HEK293T cells transfected with RC210232 using transfection reagent MegaTran 2.0 (Cat# [TT210002]).