

Product datasheet for **RC210230**

EBP1 (PA2G4) (NM_006191) Human Tagged ORF Clone

Product data:

Product Type:	Expression Plasmids
Product Name:	EBP1 (PA2G4) (NM_006191) Human Tagged ORF Clone
Tag:	Myc-DDK
Symbol:	EBP1
Synonyms:	EBP1; HG4-1; p38-2G4
Mammalian Cell Selection:	Neomycin
Vector:	pCMV6-Entry (PS100001)
E. coli Selection:	Kanamycin (25 ug/mL)
ORF Nucleotide Sequence:	>RC210230 representing NM_006191 Red=Cloning site Blue=ORF Green=Tags(s)

TTTTGTAATACGACTCACTATAGGGCGGCCGGAATTCGTCGACTGGATCCGGTACCGAGGAGATCTGCC
GCC**CGATCGCC**

ATGTCGGGCGAGGACGAGCAACAGGAGCAAACTATCGCTGAGGACCTGGTCGTGACCAAGTATAAGATGG
GGGGCGACATCGCCAACAGGGTACTTCGGTCCTTGGTGGAAGCATCTAGCTCAGGTGTGTCGGTACTGAG
CCTGTGTGAGAAAGGTGATGCCATGATTATGGAAGAAACAGGGAAATCTTCAAGAAAGAAAGGAAATG
AAGAAAGGTATTGCTTTCCACCAGCATTTCGGTAAATAACTGTGTATGTCACCTCTCCCTTTGAAGA
GCGACCAGGATTATATTCTCAAGGAAGGTGACTTGGTAAAAATTGACCTTGGGTCCATGTGGATGGCTT
CATCGCTAATGTAGCTCACACTTTTGTGGTTGATGTAGCTCAGGGGACCCAAGTAACAGGGAGGAAAGCA
GATGTTATTAAGGCAGCTCACCTTTGTGCTGAAGCTGCCCTACGCCTGGTCAAACCTGGAATCAGAACA
CACAAGTGACAGAAGCCTGGAACAAAGTTGCCCACTCATTTAACTGCACGCCAATAGAAGGTATGCTGTC
ACACCAGTTGAAGCAGCATGTCATCGATGGAGAAAAACCATTATCCAGAATCCACAGACCAGCAGAAG
AAGGACCATGAAAAAGCTGAATTTGAGGTACATGAAGTATATGCTGTGGATGTTCTGTCAGCTCAGGAG
AGGGCAAGGCCAAGGATGCAGGACAGAGAACCCTATTTACAAACGAGACCCCTCTAAACAGTATGGACT
GAAAATGAAAACCTCACGTGCCTTCTTCAGTGAGGTGGAAGGCGTTTGTGATGCCATGCCGTTTACTTTA
AGAGCATTTGAAGATGAGAAGAAGGCTCGGATGGGTGTGGTGGAGTGCGCCAAACATGAAGTGTGCAAC
CATTTAATGTTCTCTATGAGAAGGAGGTGAATTTGTTGCCAGTTTAAATTTACAGTTCTGCTCATGCC
CAATGGCCCCATGCGGATAACCAAGTGGTCCCTTCGAGCCTGACCTCTACAAGTCTGAGATGGAGTCCAG
GATGCAGAGCTAAAGGCCCTCTCCAGAGTTCTGCAAGTCGAAAAACCCAGAAAAAGAAAAAAGAAGG
CCTCCAAGACTGCAGAGAATGCCACCAAGTGGGGAACATTAGAAGAAATGAAGCTGGGGAC

ACGCGTACGCGGCCGCTCGAGCAGAACTCATCTCAGAAGAGGATCTGGCAGCAATGATATCCTGGATT
ACAAGGATGACGACGATAAGGTTTAA



[View online »](#)

Protein Sequence: >RC210230 representing NM_006191
 Red=Cloning site Green=Tags(s)

MSGEDEQQEQTIAEDLVVTYKMGGDIANRVLRLVEASSSGVSVLSLCEKGDAMIMEETGKIFKKEKEM
 KKGIAFPTISVNNVCVCHFSPKSDQDYILKEGDLVKIDLGVHVDGFIANVAHTFVVDVAQGTQVTGRKA
 DVIKAAHLCAEALRLVKPGNQNTQVTEAWNKAHSFNCTPIEGMLSHQLKQHVIDGEKTIQNPTDQOK
 KDHEKAEFEVHEVYAVDVLVSSGEGKAKDAGQRTTIYKRDPKQYGLKMKTSRAFFSEVERRFDAMPFTL
 RAFEDKKARMGVVECAKHELLQPFNVLYEKEGEFVAQFKFTVLLMPNGPMRITSGPFEPDLYKSEMEVQ
 DAELKALLQSSASRKTQKKKKKKASKTAENATSGETLEENEAGD

TRTRPLEQKLISEEDLAANDILDYKDDDDKV

Chromatograms: https://cdn.origene.com/chromatograms/mk6269_b09.zip

Restriction Sites: SgfI-MluI

Cloning Scheme:



ACCN: NM_006191

ORF Size: 1182 bp

OTI Disclaimer: The molecular sequence of this clone aligns with the gene accession number as a point of reference only. However, individual transcript sequences of the same gene can differ through naturally occurring variations (e.g. polymorphisms), each with its own valid existence. This clone is substantially in agreement with the reference, but a complete review of all prevailing variants is recommended prior to use. [More info](#)

OTI Annotation: This clone was engineered to express the complete ORF with an expression tag. Expression varies depending on the nature of the gene.

Components: The ORF clone is ion-exchange column purified and shipped in a 2D barcoded Matrix tube containing 10ug of transfection-ready, dried plasmid DNA (reconstitute with 100 ul of water).

Reconstitution Method:

1. Centrifuge at 5,000xg for 5min.
2. Carefully open the tube and add 100ul of sterile water to dissolve the DNA.
3. Close the tube and incubate for 10 minutes at room temperature.
4. Briefly vortex the tube and then do a quick spin (less than 5000xg) to concentrate the liquid at the bottom.
5. Store the suspended plasmid at -20°C. The DNA is stable for at least one year from date of shipping when stored at -20°C.

RefSeq: [NM_006191.3](#)

RefSeq Size: 2643 bp

RefSeq ORF: 1185 bp

Locus ID: 5036

UniProt ID: [Q9UQ80](#)

Cytogenetics: 12q13.2

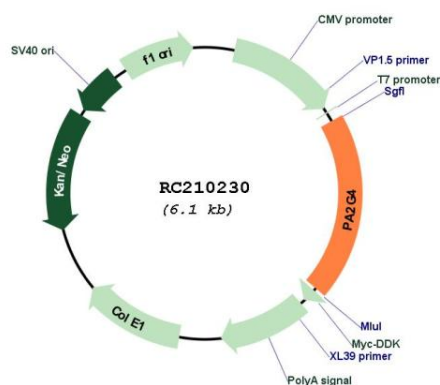
Domains: Peptidase_M24

Protein Families: Druggable Genome, Protease, Stem cell - Pluripotency

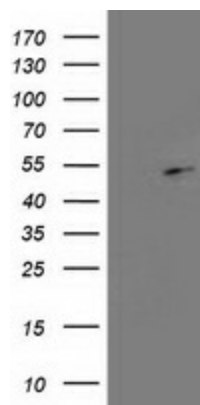
MW: 43.6 kDa

Gene Summary: This gene encodes an RNA-binding protein that is involved in growth regulation. This protein is present in pre-ribosomal ribonucleoprotein complexes and may be involved in ribosome assembly and the regulation of intermediate and late steps of rRNA processing. This protein can interact with the cytoplasmic domain of the ErbB3 receptor and may contribute to transducing growth regulatory signals. This protein is also a transcriptional co-repressor of androgen receptor-regulated genes and other cell cycle regulatory genes through its interactions with histone deacetylases. This protein has been implicated in growth inhibition and the induction of differentiation of human cancer cells. Six pseudogenes, located on chromosomes 3, 6, 9, 18, 20 and X, have been identified. [provided by RefSeq, Jul 2008]

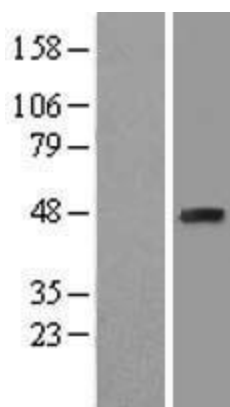
Product images:



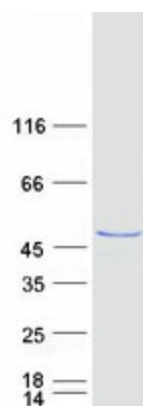
Circular map for RC210230



HEK293T cells were transfected with the pCMV6-ENTRY control (Cat# [PS100001], Left lane) or pCMV6-ENTRY PA2G4 (Cat# RC210230, Right lane) cDNA for 48 hrs and lysed. Equivalent amounts of cell lysates (5 ug per lane) were separated by SDS-PAGE and immunoblotted with anti-PA2G4 (Cat# [TA503203]). Positive lysates [LY416812] (100ug) and [LC416812] (20ug) can be purchased separately from OriGene.



Western blot validation of overexpression lysate (Cat# [LY416812]) using anti-DDK antibody (Cat# [TA50011-100]). Left: Cell lysates from untransfected HEK293T cells; Right: Cell lysates from HEK293T cells transfected with RC210230 using transfection reagent MegaTran 2.0 (Cat# [TT210002]).



Coomassie blue staining of purified PA2G4 protein (Cat# [TP310230]). The protein was produced from HEK293T cells transfected with PA2G4 cDNA clone (Cat# RC210230) using MegaTran 2.0 (Cat# [TT210002]).