

Product datasheet for RC210229

DEFA6 (NM_001926) Human Tagged ORF Clone

Product data:

Product Type:	Expression Plasmids
Product Name:	DEFA6 (NM_001926) Human Tagged ORF Clone
Tag:	Myc-DDK
Symbol:	DEFA6
Synonyms:	DEF6; HD-6
Mammalian Cell Selection:	Neomycin
Vector:	pCMV6-Entry (PS100001)
E. coli Selection:	Kanamycin (25 ug/mL)
ORF Nucleotide Sequence:	>RC210229 ORF sequence Red=Cloning site Blue=ORF Green=Tags(s)

TTTTGTAATACGACTCACTATAGGGCGCCGGGAATTCGTCGACTGGATCCGGTACCGAGGAGATCTGCC
GCC**CGATCGCC**

ATGAGAACCCTCACCATCCTCACTGCTGTTCTCCTCGTGGCCCTCCAGGCCAAGGCTGAGCCACTCCAAG
CTGAGGATGATCCACTGCAGGCAAAGCTTATGAGGCTGATGCCAGGAGCAGCGTGGGGCAAATGACCA
GGACTTTGCCGTCTCCTTTGCAGAGGATGCAAGCTCAAGTCTTAGAGCTTGGGCTCAACAAGGGCTTTC
ACTTGCCATTGCAGAAGGTCCTGTATTCAACAGAATATTCCTATGGGACCTGCACTGTCATGGGTATTA
ACCACAGATTCTGCTGCCTC

ACGCGTACGCGGCCGCTCGAGCAGAACTCATCTCAGAAGAGGATCTGGCAGCAAATGATATCCTGGATT
ACAAGGATGACGACGATAAGGTTTAA

Protein Sequence:	>RC210229 protein sequence Red=Cloning site Green=Tags(s)
-------------------	--

MRTLILTAVLLVALQAKAEPLQAEDDPLQAKAYEADAQEQRGANDQDFAVSFAEDASSSLRALGSTRAF
TCHRRSCYSTEYSYGTCTVMGINHRFCL

TRTRPLEQKLISEEDLAANDILDYKDDDDKV

Chromatograms: https://cdn.origene.com/chromatograms/mk6375_a08.zip

Restriction Sites: SgfI-MluI



[View online »](#)

Cloning Scheme:


ACCN: NM_001926

ORF Size: 300 bp

OTI Disclaimer: The molecular sequence of this clone aligns with the gene accession number as a point of reference only. However, individual transcript sequences of the same gene can differ through naturally occurring variations (e.g. polymorphisms), each with its own valid existence. This clone is substantially in agreement with the reference, but a complete review of all prevailing variants is recommended prior to use. [More info](#)

OTI Annotation: This clone was engineered to express the complete ORF with an expression tag. Expression varies depending on the nature of the gene.

Components: The ORF clone is ion-exchange column purified and shipped in a 2D barcoded Matrix tube containing 10ug of transfection-ready, dried plasmid DNA (reconstitute with 100 ul of water).

- Reconstitution Method:**
1. Centrifuge at 5,000xg for 5min.
 2. Carefully open the tube and add 100ul of sterile water to dissolve the DNA.
 3. Close the tube and incubate for 10 minutes at room temperature.
 4. Briefly vortex the tube and then do a quick spin (less than 5000xg) to concentrate the liquid at the bottom.
 5. Store the suspended plasmid at -20°C. The DNA is stable for at least one year from date of shipping when stored at -20°C.

RefSeq: [NM_001926.4](#)

RefSeq Size: 479 bp

RefSeq ORF: 303 bp

Locus ID: 1671

UniProt ID: [Q01524](#)

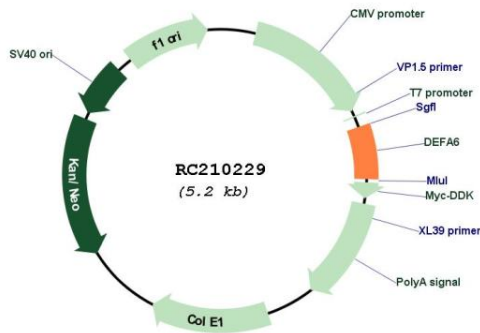
Cytogenetics: 8p23.1

Protein Families: Secreted Protein

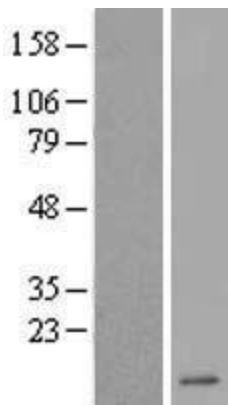
MW: 11 kDa

Gene Summary: Defensins are a family of antimicrobial and cytotoxic peptides thought to be involved in host defense. They are abundant in the granules of neutrophils and also found in the epithelia of mucosal surfaces such as those of the intestine, respiratory tract, urinary tract, and vagina. Members of the defensin family are highly similar in protein sequence and distinguished by a conserved cysteine motif. Several alpha defensin genes appear to be clustered on chromosome 8. The protein encoded by this gene, defensin, alpha 6, is highly expressed in the secretory granules of Paneth cells of the small intestine, and likely plays a role in host defense of human bowel. [provided by RefSeq, Oct 2014]

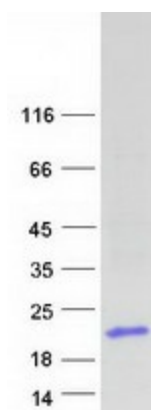
Product images:



Circular map for RC210229



Western blot validation of overexpression lysate (Cat# [LY419661]) using anti-DDK antibody (Cat# [TA50011-100]). Left: Cell lysates from untransfected HEK293T cells; Right: Cell lysates from HEK293T cells transfected with RC210229 using transfection reagent MegaTran 2.0 (Cat# [TT210002]).



Coomassie blue staining of purified DEFA6 protein (Cat# [TP310229]). The protein was produced from HEK293T cells transfected with DEFA6 cDNA clone (Cat# RC210229) using MegaTran 2.0 (Cat# [TT210002]).