

Product datasheet for RC210222

Gastrin (GAST) (NM_000805) Human Tagged ORF Clone

Product data:

Product Type: Expression Plasmids
Product Name: Gastrin (GAST) (NM_000805) Human Tagged ORF Clone
Tag: Myc-DDK
Symbol: Gastrin
Synonyms: GAS
Mammalian Cell Selection: Neomycin
Vector: pCMV6-Entry (PS100001)
E. coli Selection: Kanamycin (25 ug/mL)
ORF Nucleotide Sequence: >RC210222 ORF sequence
Red=Cloning site Blue=ORF Green=Tags(s)

TTTTGTAATACGACTCACTATAGGGCGCCGGGAATTCGTCGACTGGATCCGGTACCGAGGAGATCTGCC
GCC**CGATCGCC**

ATGCAGCGACTATGTGTGTATGTGCTGATCTTTGCACTGGCTCTGGCCGCTTCTCTGAAGCTTCTTGG
AGCCCCGCTCCCAGCAGCCAGATGCACCCTTAGGTACAGGGGCCAACAGGGACCTGGAGCTACCCTGGCT
GGAGCAGCAGGGCCAGCCTCTCATCATCGAAGGCAGCTGGGACCCAGGGTCCCCACACCTCGTGGCA
GACCCGTCGAAGAAGCAGGGACCATGGCTGGAGGAAGAAGAAGCCTATGGATGGATGGACTTCGGCC
GCCGCAGTGCTGAGGATGAGAAC

ACGCGTACGCGGCCGCTCGAGCAGAAACTCATCTCAGAAGAGGATCTGGCAGCAAATGATATCCTGGATT
ACAAGGATGACGACGATAAGGTTTAA

Protein Sequence: >RC210222 protein sequence
Red=Cloning site Green=Tags(s)
MQRLCVYVLIIFALALAAFSEASWKPRSQQPDAPLGTGANRDLELPWLEQQGPASHHRRQLGPQGPPLVA
DPSKKQGPWLEEEEEAYGWMDFGRRSAEDEN

TRTRPLEQKLISEEDLAANDILDYKDDDDKV

Chromatograms: https://cdn.origene.com/chromatograms/mk6375_d05.zip

Restriction Sites: SgfI-MluI



[View online »](#)

Cloning Scheme:


ACCN: NM_000805

ORF Size: 303 bp

OTI Disclaimer: The molecular sequence of this clone aligns with the gene accession number as a point of reference only. However, individual transcript sequences of the same gene can differ through naturally occurring variations (e.g. polymorphisms), each with its own valid existence. This clone is substantially in agreement with the reference, but a complete review of all prevailing variants is recommended prior to use. [More info](#)

OTI Annotation: This clone was engineered to express the complete ORF with an expression tag. Expression varies depending on the nature of the gene.

Components: The ORF clone is ion-exchange column purified and shipped in a 2D barcoded Matrix tube containing 10ug of transfection-ready, dried plasmid DNA (reconstitute with 100 ul of water).

Reconstitution Method:

1. Centrifuge at 5,000xg for 5min.
2. Carefully open the tube and add 100ul of sterile water to dissolve the DNA.
3. Close the tube and incubate for 10 minutes at room temperature.
4. Briefly vortex the tube and then do a quick spin (less than 5000xg) to concentrate the liquid at the bottom.
5. Store the suspended plasmid at -20°C. The DNA is stable for at least one year from date of shipping when stored at -20°C.

RefSeq: [NM_000805.4](#)

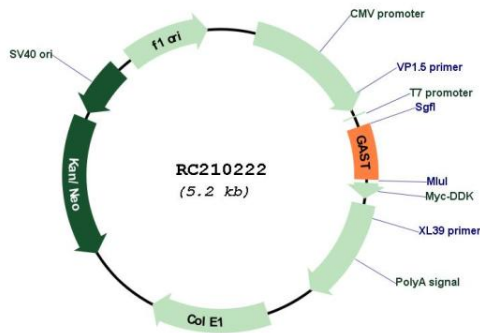
RefSeq Size: 475 bp

RefSeq ORF: 306 bp

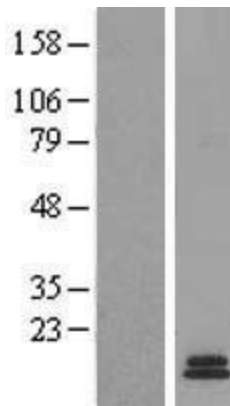
Locus ID: 2520

UniProt ID: [P01350](#)
Cytogenetics: 17q21.2
Protein Families: Druggable Genome, Secreted Protein
MW: 11.4 kDa
Gene Summary: Gastrin is a hormone whose main function is to stimulate secretion of hydrochloric acid by the gastric mucosa, which results in gastrin formation inhibition. This hormone also acts as a mitogenic factor for gastrointestinal epithelial cells. Gastrin has two biologically active peptide forms, G34 and G17. [provided by RefSeq, Jul 2008]

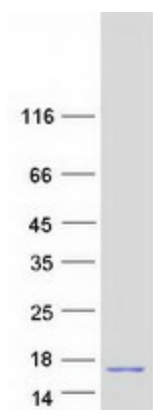
Product images:



Circular map for RC210222



Western blot validation of overexpression lysate (Cat# [LY424512]) using anti-DDK antibody (Cat# [TA50011-100]). Left: Cell lysates from untransfected HEK293T cells; Right: Cell lysates from HEK293T cells transfected with RC210222 using transfection reagent MegaTran 2.0 (Cat# [TT210002]).



Coomassie blue staining of purified GAST protein (Cat# [TP310222]). The protein was produced from HEK293T cells transfected with GAST cDNA clone (Cat# RC210222) using MegaTran 2.0 (Cat# [TT210002]).