

Product datasheet for RC210203L1

ABO (NM_020469) Human Tagged Lenti ORF Clone

Product data:

Product Type:	Expression Plasmids
Product Name:	ABO (NM_020469) Human Tagged Lenti ORF Clone
Tag:	Myc-DDK
Symbol:	ABO
Synonyms:	A3GALNT; A3GALT1; GTB; NAGAT
Mammalian Cell Selection:	None
Vector:	pLenti-C-Myc-DDK (PS100064)
E. coli Selection:	Chloramphenicol (34 ug/mL)
ORF Nucleotide Sequence:	The ORF insert of this clone is exactly the same as(RC210203).
Restriction Sites:	SgfI-MluI
Cloning Scheme:	

Cloning sites used for ORF Shuttling:



* The last codon before the Stop codon of the ORF.

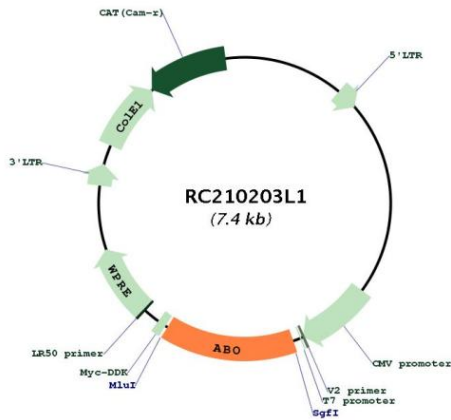
ACCN:	NM_020469
ORF Size:	1062 bp



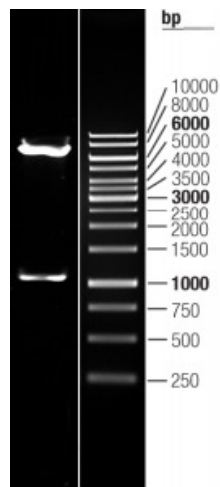
[View online >](#)

OTI Disclaimer:	The molecular sequence of this clone aligns with the gene accession number as a point of reference only. However, individual transcript sequences of the same gene can differ through naturally occurring variations (e.g. polymorphisms), each with its own valid existence. This clone is substantially in agreement with the reference, but a complete review of all prevailing variants is recommended prior to use. More info
OTI Annotation:	This clone was engineered to express the complete ORF with an expression tag. Expression varies depending on the nature of the gene.
Components:	The ORF clone is ion-exchange column purified and shipped in a 2D barcoded Matrix tube containing 10ug of transfection-ready, dried plasmid DNA (reconstitute with 100 ul of water).
Reconstitution Method:	<ol style="list-style-type: none">1. Centrifuge at 5,000xg for 5min.2. Carefully open the tube and add 100ul of sterile water to dissolve the DNA.3. Close the tube and incubate for 10 minutes at room temperature.4. Briefly vortex the tube and then do a quick spin (less than 5000xg) to concentrate the liquid at the bottom.5. Store the suspended plasmid at -20°C. The DNA is stable for at least one year from date of shipping when stored at -20°C.
RefSeq:	NM_020469.2
RefSeq Size:	1580 bp
RefSeq ORF:	1065 bp
Locus ID:	28
UniProt ID:	P16442
Cytogenetics:	9q34.2
Protein Families:	Secreted Protein, Transmembrane
Protein Pathways:	Glycosphingolipid biosynthesis - lacto and neolacto series, Metabolic pathways
MW:	40.9 kDa
Gene Summary:	This gene encodes proteins related to the first discovered blood group system, ABO. Variation in the ABO gene (chromosome 9q34.2) is the basis of the ABO blood group, thus the presence of an allele determines the blood group in an individual. The 'O' blood group is caused by a deletion of guanine-258 near the N-terminus of the protein which results in a frameshift and translation of an almost entirely different protein. Individuals with the A, B, and AB alleles express glycosyltransferase activities that convert the H antigen into the A or B antigen. Other minor alleles have been found for this gene. This locus has been identified as a susceptibility locus for severe coronavirus disease 2019 (COVID-19) by genome-wide association study. [provided by RefSeq, Aug 2020]

Product images:



Circular map for RC210203L1



Double digestion of RC210203L1 using SgfI and MluI