

Product datasheet for **RC210196**

UBASH3A (NM_001001895) Human Tagged ORF Clone

Product data:

Product Type:	Expression Plasmids
Product Name:	UBASH3A (NM_001001895) Human Tagged ORF Clone
Tag:	Myc-DDK
Symbol:	UBASH3A
Synonyms:	CLIP4; STS-2; TULA; TULA-1
Mammalian Cell Selection:	Neomycin
Vector:	pCMV6-Entry (PS100001)
E. coli Selection:	Kanamycin (25 ug/mL)



[View online »](#)

ORF Nucleotide Sequence:

>RC210196 ORF sequence
 Red=Cloning site Blue=ORF Green=Tags(s)

TTTTGTAATACGACTCACTATAGGGCGGCCGGAATTCGTCGACTGGATCCGGTACCGAGGAGATCTGCC
 GCC**GCGATCGCC**

ATGGCAGCGGGGAGACGCAGCTCTACGCCAAGGTCTCCAACAAGCTCAAGGGCCGAGCAGCCCTCCC
 TCCTGGAGCCCTTCTTGCCATGGCTTCCCGGTGCACACCGCGCTGAAAGCGTTGGCAGCCACGGGGAG
 GAAGACGGCGGAGGAGGCCTTGCCCTGGCTGCATGATCATTGCAATGACCATTCCCTAGACGACCCCATC
 CCCCAGGAGTATGCCCTTTCTCTGTCCAACGGGGCCCTGCTGGAAAACTTCAAGAGTTCTGGAGAG
 AGAGCAAGCGCCAGTGTGCAAAGAAGAGAGCTCATGAGGTCTCCACACGTGACACTCTGTGACTTCTT
 CACGTGTGAAGACCAGAAGGTGGAATGCCTGTACGAGGCGCTGAAGAGAGCTGGAGACAGGCTCTGGGC
 TCCTTCCCACGGCCGTGCCTCTGGCTCCTCCTCCATCAGTACCTCGGCTTCTTCGTCAGTGGCA
 GCCCCGACAGCTCATCCGGGAATTCGCCATGACCTTCCGCACGGAAGCATCTCTTAGCAGACTGCTC
 CGTGAAGCCTTACACAAACAGCTGCATCTGACCTTGGCCACAAGTTTACCCACCACAGAGGACG
 CTGGAGCAGCTGGCCAGAGCCATCCCCCTGGGCCACAGCTGCCAGTGGACCGCAGCACTCTACTCCGAG
 ACATGCGCTTGTGCACTACCAGACCCTGAGAGCCCTATTCCAGTACAAACCCGAGAAGCTGGATGAGCT
 GACGCTAAGTCTGGTACTACATCTTTGTGGACCCACGCAGCAGGACGAAGCCAGCGAGGGCTGGGTG
 ATTGGGATCTCACAGCGGACGGGCTGCCGGGGCTTCTGCCGAAAACTACACGGATCGAGCCAGTGA
 CTGACACGTGGGTGAAGCACAGGATGTACACCTCAGTCTAGCCACAGACCTGAAGTCCAGAAAGGATGG
 TGAAGCCAGCAGCAGATGCAGCGGGGAATTTCTCCACAAACGCAAGGAGTCTTAGCAGTTACAGGCC
 TTGCAGGCTACCATTCGAAGGAAGAGCGTGTGGTGGTTCGCCACGGGGAGAGAGTGGATCAGATCTTCG
 GGAAGGCATGGCTGCAGCAATGCTCCACTCCTGATGGGAAATACTACAGGCCAGACCTGAATTTCCCTCG
 CAGTCTGCCAAGACGGAGTCTGGGATCAAAGACTTTGAAAACGATCCCCATTATCATCGTGTGGCATT
 TTCCAGTCCAGAATTGCAGGGGACGCGCTACTGGACAGTGGTATCAGAATCAGCTCTGTGTTGCCCTCCC
 CAGCCCTCCGCTGTGTGCAGACGGCCAACTCATCCTGGAAGAACTCAAAGTGGAGAAAAAATCAAGAT
 ACGAGTGGAACTGGAATCTTTGAATGGACAAAATGGGAAGCTGGCAAAACCCCAACCCCTCATGAGC
 CTGGAAGAGCTGAAAGAGGCAAATTTCAACATTGACACTGATTACAGGCCCGGTTTCCCTGTCCGCC
 TCATGCCGGCCGAGAGCTACCAGGAGTACATGGACAGGTGCACGGCGAGCATGGTCAAATCGTCAACAC
 CTGTCCGACGACACGGGTGTCATCCTAATTGTGAGTACGGCTCCACTCTGGACTCTGCACGGGCCA
 CTGCTCGGGCTGCCGCCCGGAATGTGGGGATTTGCCCAACTCGTGAGAAAGATCCCTTCCCTGGGCA
 TGTGCTTCTGTGAAGAAAATAAAGAGGAAGGAAAATGGGAGTTGGTGAACCCACCGGTGAAGACCTGAC
 CCACGGGGCGAACGCAGTATTTAACTGGAGAACTGGATCTCAGGCAAC

ACGCGTACGCGGCCGCTCGAGCAGAACTCATCTCAGAAGAGGATCTGGCAGCAAATGATATCCTGGATT
 ACAAGGATGACGACGATAAGGTTTAA

Protein Sequence:

>RC210196 protein sequence
 Red=Cloning site Green=Tags(s)

MAAGETQLYAKVSNKLGKSSPSLLEPFLAMGFPVHTALKALAATGRKTAEEALAWLHDHCNDHSLDDPI
 PQEYALFLCPTGPLELEKQEFWRESKRQCAKNRAHEVFPVHTLCDFFTCEDQKVECLYEALKRAGDRLLG
 SFPTAVPLALHSSI SYLGFVSGSPADVIREFAMTFATEASLLADCSVKPYTKQLHLTLAHKFYPHHQRT
 LEQLARAIPLGHSCQWTAALYSRDMRFVHYQTLRALFQYKQNVDELTLSPGDYIFVDPTQQDEASEGWV
 IGISQRTGCRGFLPENYTDRAESDWTWKHRMYTFLATDLNSRKDGEASSRCSGEFLPQTARSLSSLQA
 LQATIARKSVLVVRHGERVDQIFGKAWLQQCSTPDGKYRPNLNFPCSLPRRSRGIKDFENDPPLSSCGI
 FQSRIAGDALLDSGIRISSVFASPALRCVQTAKLILEELKLEKKIKIRVEPGIFEWTKWEAGKTTPTLMS
 LEELKEANFNIDTDYRPAFPLSALMPAESYQEYMDRCTASMVQIVNTCPQDTGVILIVSHGSTLDSCTRP
 LLGLPPRECGDFAQLVRKIPSLGMCFCEENKEEGKWELVNPPVKTLTHGANAVFNWRNWSGN

TRTRPLEQKLISEEDLAANDILDYKDDDDKV

Chromatograms: https://cdn.origene.com/chromatograms/mk6375_e04.zip

Restriction Sites: SgfI-MluI

Cloning Scheme:



ACCN: NM_001001895

ORF Size: 1869 bp

OTI Disclaimer: The molecular sequence of this clone aligns with the gene accession number as a point of reference only. However, individual transcript sequences of the same gene can differ through naturally occurring variations (e.g. polymorphisms), each with its own valid existence. This clone is substantially in agreement with the reference, but a complete review of all prevailing variants is recommended prior to use. [More info](#)

OTI Annotation: This clone was engineered to express the complete ORF with an expression tag. Expression varies depending on the nature of the gene.

Components: The ORF clone is ion-exchange column purified and shipped in a 2D barcoded Matrix tube containing 10ug of transfection-ready, dried plasmid DNA (reconstitute with 100 ul of water).

Reconstitution Method:

1. Centrifuge at 5,000xg for 5min.
2. Carefully open the tube and add 100ul of sterile water to dissolve the DNA.
3. Close the tube and incubate for 10 minutes at room temperature.
4. Briefly vortex the tube and then do a quick spin (less than 5000xg) to concentrate the liquid at the bottom.
5. Store the suspended plasmid at -20°C. The DNA is stable for at least one year from date of shipping when stored at -20°C.

RefSeq: [NM_001001895.3](#)

RefSeq Size: 2442 bp

RefSeq ORF: 1872 bp

Locus ID: 53347

UniProt ID: [P57075](#)

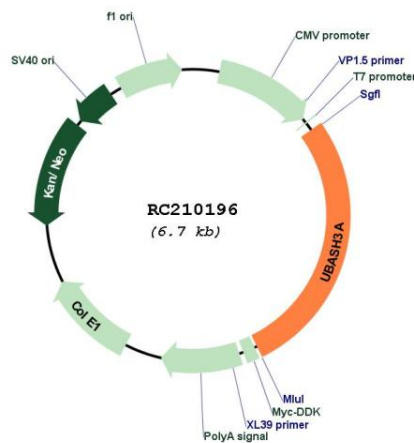
Cytogenetics: 21q22.3

Protein Families: Druggable Genome

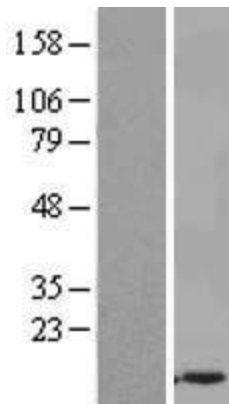
MW: 69.9 kDa

Gene Summary: This gene encodes one of two family members belonging to the T-cell ubiquitin ligand (TULA) family. Both family members can negatively regulate T-cell signaling. This family member can facilitate growth factor withdrawal-induced apoptosis in T cells, which may occur via its interaction with AIF, an apoptosis-inducing factor. Alternative splicing of this gene results in multiple transcript variants. [provided by RefSeq, Aug 2011]

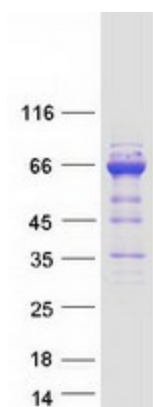
Product images:



Circular map for RC210196



Western blot validation of overexpression lysate (Cat# [LY424264]) using anti-DDK antibody (Cat# [TA50011-100]). Left: Cell lysates from untransfected HEK293T cells; Right: Cell lysates from HEK293T cells transfected with RC210196 using transfection reagent MegaTran 2.0 (Cat# [TT210002]).



Coomassie blue staining of purified UBASH3A protein (Cat# [TP310196]). The protein was produced from HEK293T cells transfected with UBASH3A cDNA clone (Cat# RC210196) using MegaTran 2.0 (Cat# [TT210002]).