

## Product datasheet for **RC210192L2V**

### **ATOH1 (NM\_005172) Human Tagged ORF Clone Lentiviral Particle**

#### **Product data:**

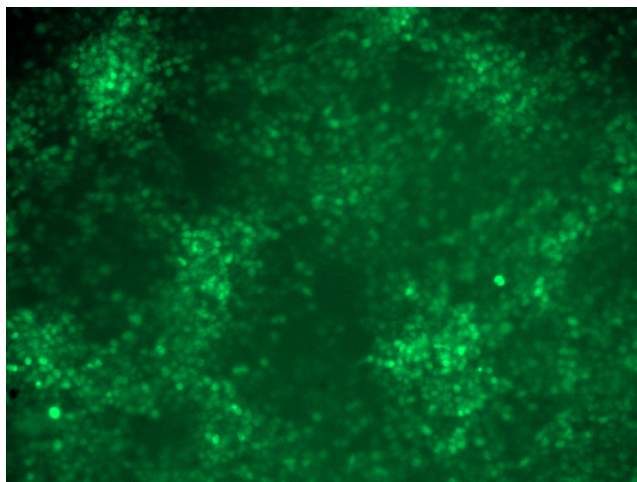
|                           |  |
|---------------------------|--|
| Product Type:             | Lentiviral Particles   |
| Product Name:             | ATOH1 (NM_005172) Human Tagged ORF Clone Lentiviral Particle   |
| Symbol:                   | ATOH1  |
| Synonyms:                 | ATH1; bHLHa14; HATH1; MATH-1   |
| Mammalian Cell Selection: | None   |
| Vector:                   | pLenti-C-mGFP (PS100071)   |
| Tag:                      | mGFP   |
| ACCN:                     | NM_005172  |
| ORF Size:                 | 1062 bp  |
| ORF Nucleotide Sequence:  | The ORF insert of this clone is exactly the same as(RC210192).   |
| OTI Disclaimer:           | The molecular sequence of this clone aligns with the gene accession number as a point of reference only. However, individual transcript sequences of the same gene can differ through naturally occurring variations (e.g. polymorphisms), each with its own valid existence. This clone is substantially in agreement with the reference, but a complete review of all prevailing variants is recommended prior to use. <a href="#">More info</a> |
| OTI Annotation:           | This clone was engineered to express the complete ORF with an expression tag. Expression varies depending on the nature of the gene.   |
| RefSeq:                   | <a href="#">NM_005172.1</a>  |
| RefSeq Size:              | 1065 bp  |
| RefSeq ORF:               | 1065 bp  |
| Locus ID:                 | 474  |
| UniProt ID:               | <a href="#">Q92858</a>   |
| Cytogenetics:             | 4q22.2   |
| Protein Families:         | Druggable Genome, Transcription Factors  |
| MW:                       | 38 kDa   |



[View online »](#)

**Gene Summary:** This protein belongs to the basic helix-loop-helix (BHLH) family of transcription factors. It activates E-box dependent transcription along with E47. [provided by RefSeq, Jul 2008]

**Product images:**



[RC210192L2] was used to prepare Lentiviral particles using [TR30037] packaging kit. HEK293T cells were transduced with RC210192L2V particle to overexpress human ATOH1-mGFP fusion protein.