

Product datasheet for RC210192

ATOH1 (NM_005172) Human Tagged ORF Clone

Product data:

Product Type:	Expression Plasmids
Product Name:	ATOH1 (NM_005172) Human Tagged ORF Clone
Tag:	Myc-DDK
Symbol:	ATOH1
Synonyms:	ATH1; bHLHa14; HATH1; MATH-1
Mammalian Cell Selection:	Neomycin
Vector:	pCMV6-Entry (PS100001)
E. coli Selection:	Kanamycin (25 ug/mL)
ORF Nucleotide Sequence:	>RC210192 representing NM_005172 Red=Cloning site Blue=ORF Green=Tags(s)

TTTTGTAATACGACTCACTATAGGGCGCCGGGAATTCGTCGACTGGATCCGGTACCGAGGAGATCTGCC
GCC**CGATCGCC**

ATGTCGCCCTGCTGCATGCAGAAGAGTGGGCTGAAGTGAAGGAGTTGGGAGACCACCATCGCCAGCCCC
AGCCGCATCATCTCCGCAACCGCCGCCCGCCGAGCCACCTGCAACTTTCAGGCGAGAGAGCATCC
CGTCTACCGCCTGAGCTGTCCCTCTGGACAGCACCCACCGCCCTGGCTGGCTCCCACTTTGCAG
GGCATCTGCACGGCACGCGCCCGCCAGTATTTGCTACATTCCCCGGAGCTGGGTGCCTCAGAGGCCGCTG
CGCCCCGGGACGAGGTGGACGGCCGGGGGAGCTGGTAAGGAGGAGCAGCGCGGTGCCAGCAGCAGCAA
GAGCCCCGGGCCGTGAAAGTGCGGGAACAGCTGTGCAAGCTGAAAGCGGGGTGGTGGTAGACGAGCTG
GGCTGCAGCCGCAACCGGCCCTTCCAGCAAACAGGTGAATGGGTGCAGAAGCAGAGACGGCTAGCAG
CCAACGCCAGGGAGCGCGCAGGATGCATGGGCTGAACCACGCCCTTCGACCAGCTGCGCAATGTTATCCC
GTGTTCAACAACGACAAGAAGCTGTCCAAATATGAGACCCTGCAGATGGCCAAATCTACATCAACGCC
TTGTCCGAGCTGCTACAAACGCCAGCGGAGGGGAACAGCCACCGCCCTCCAGCCTCTGAAAAAGCG
ACCACCACCACCTTCGCACCGCGCCTCCTATGAAGGGGGCGCGGCAACGCGACCGCAGCTGGGGCTCA
GCAGGCTTCCGGAGGGAGCCAGCGGCCGACCCCGCCGGAGTTGCCGGACTCGTTCTCAGCCCCAGCT
TCTGCGGAGGGTACTCGGTGCAGCTGGACGCTCTGCACCTTCGACTTTCGAGGACAGCGCCCTGACAG
CGATGATGGCGCAAAAGAATTTGTCTCTCTCTCCCGGAGCATCTTGACGCCAGTGCAGGAGGAAAA
CAGCAAAACTTCGCTCGGTCCACAGAAGCGACGGGAATTTCCCGCCATTCCATTACAGTGACTCG
GATGAGGCAAGT

ACGCGTACGCGGCCGCTCGAGCAGAACTCATCTCAGAAGAGGATCTGGCAGCAATGATATCCTGGATT
ACAAGGATGACGACGATAAGGTTAA



[View online »](#)

Protein Sequence: >RC210192 representing NM_005172
 Red=Cloning site Green=Tags(s)

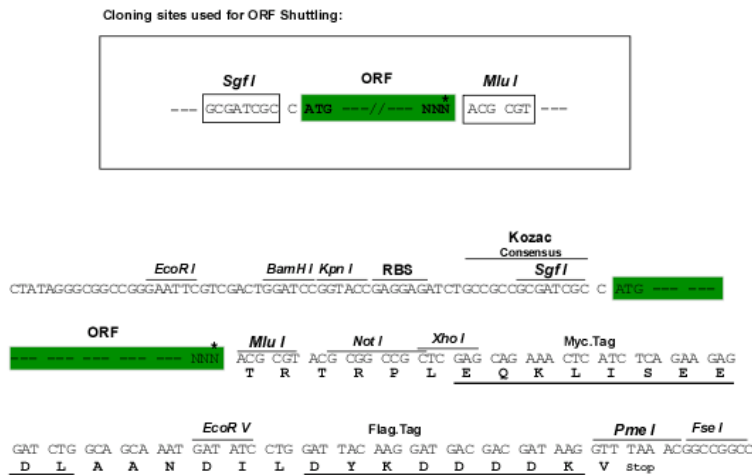
MSRLLHAEWEAEVKELGDHHRQPQHLLPQPPPPQPPATLQAREHPVYPPEL SLLDSTDPRAWLAPT LQ
 GICTARAAQYLLHSPELGASEAAAPRDEVDGRGELVRRSSGGASSKSPGPVKVREQLCKLKGVVVDEL
 GCSRQRAPSSKQVNGVQKQRRLAANARERRRMHGLNHAFDQLRNVIPSFNNDKLSKYETLQMAQIYINA
 LSELLQTPSGGEQPPPPASCKSDHHHLRTAASYEGGAGNATAAGAQQASGGSQRTPPGSCRTRFSAPA
 SAGGYSVQLDALHFSTFEDSALTAMMAQKNLSPSLPGSILQPVEENSKTSPRSHRSDGEFSPHSHYSDS
 DEAS

TRTRPLEQKLISEEDLAANDILDYKDDDDKV

Chromatograms: https://cdn.origene.com/chromatograms/mg2482_d03.zip

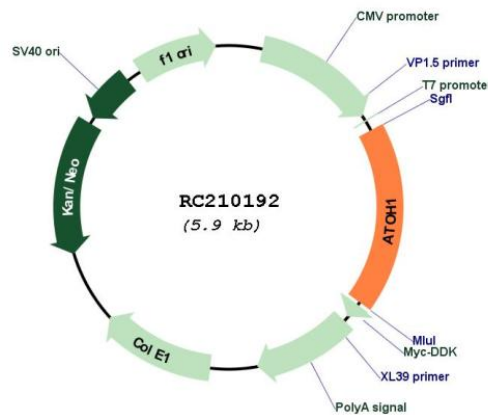
Restriction Sites: SgfI-MluI

Cloning Scheme:

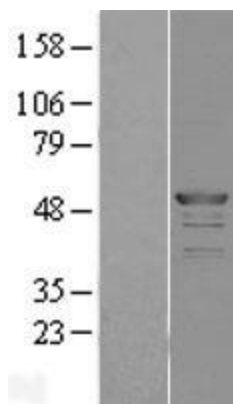


* The last codon before the Stop codon of the ORF

Plasmid Map:



ACCN:	NM_005172
ORF Size:	1062 bp
OTI Disclaimer:	<p>Due to the inherent nature of this plasmid, standard methods to replicate additional amounts of DNA in E. coli are highly likely to result in mutations and/or rearrangements. Therefore, OriGene does not guarantee the capability to replicate this plasmid DNA. Additional amounts of DNA can be purchased from OriGene with batch-specific, full-sequence verification at a reduced cost. Please contact our customer care team at custsupport@origene.com or by calling 301.340.3188 option 3 for pricing and delivery.</p> <p>The molecular sequence of this clone aligns with the gene accession number as a point of reference only. However, individual transcript sequences of the same gene can differ through naturally occurring variations (e.g. polymorphisms), each with its own valid existence. This clone is substantially in agreement with the reference, but a complete review of all prevailing variants is recommended prior to use. More info</p>
OTI Annotation:	This clone was engineered to express the complete ORF with an expression tag. Expression varies depending on the nature of the gene.
Components:	The ORF clone is ion-exchange column purified and shipped in a 2D barcoded Matrix tube containing 10ug of transfection-ready, dried plasmid DNA (reconstitute with 100 ul of water).
Reconstitution Method:	<ol style="list-style-type: none"> 1. Centrifuge at 5,000xg for 5min. 2. Carefully open the tube and add 100ul of sterile water to dissolve the DNA. 3. Close the tube and incubate for 10 minutes at room temperature. 4. Briefly vortex the tube and then do a quick spin (less than 5000xg) to concentrate the liquid at the bottom. 5. Store the suspended plasmid at -20°C. The DNA is stable for at least one year from date of shipping when stored at -20°C.
RefSeq:	NM_005172.2
RefSeq Size:	1065 bp
RefSeq ORF:	1065 bp
Locus ID:	474
UniProt ID:	Q92858
Cytogenetics:	4q22.2
Protein Families:	Druggable Genome, Transcription Factors
MW:	38 kDa
Gene Summary:	This protein belongs to the basic helix-loop-helix (BHLH) family of transcription factors. It activates E-box dependent transcription along with E47. [provided by RefSeq, Jul 2008]

Product images:

Western blot validation of overexpression lysate (Cat# [LY401583]) using anti-DDK antibody (Cat# [TA50011-100]). Left: Cell lysates from untransfected HEK293T cells; Right: Cell lysates from HEK293T cells transfected with RC210192 using transfection reagent MegaTran 2.0 (Cat# [TT210002]).