

Product datasheet for **RC210191**

CD2AP (NM_012120) Human Tagged ORF Clone

Product data:

Product Type:	Expression Plasmids
Product Name:	CD2AP (NM_012120) Human Tagged ORF Clone
Tag:	Myc-DDK
Symbol:	CD2AP
Synonyms:	CMS
Mammalian Cell Selection:	Neomycin
Vector:	pCMV6-Entry (PS100001)
E. coli Selection:	Kanamycin (25 ug/mL)



[View online »](#)

ORF Nucleotide
Sequence:

>RC210191 representing NM_012120
Red=Cloning site Blue=ORF Green=Tags(s)

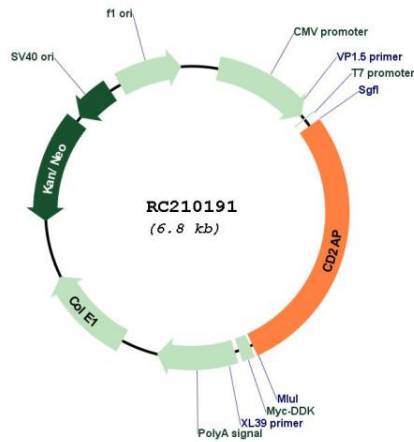
TTTTGTAATACGACTCACTATAGGGCGGCCGGAATTCGTGACTGGATCCGGTACCGAGGAGATCTGCC
GCC**CGGATCGCC**

ATGGTTGACTATATTGTGGAGTATGACTATGATGCTGTACATGATGATGAATTAACATTCGAGTTGGAG
AAATCATCAGGAATGTGAAAAAGCTACAGGAGGAAGGGTGGCTGGAAGGAGAAGCTAAATGGGAGAAGAGG
AATGTTCCCTGACAATTCGTTAAGGAAATTAAGAAGAGAGACGGAATTCAGGATGACAGTTGCCATC
AAACGGGAAAGGCATGGGAATGTAGCAAGTCTGTACAACGAATAAGCACCTATGGACTCCAGCTGGAG
GAATTCAGCCACATCCACAAACCAAAACATTAAGAAGAAGACCAAGAAGCGTCAGTGTAAAGTTCTTTT
TGAGTACATTCACAAAATGAGGATGAAGTGGAGCTGAAAGTGGGAGATATTATTGATATTAATGAAGAG
GTAGAAGAAGGCTGGTGGAGTGGAAACCCTGAATAACAAGTTGGGACTGTTCCCTCAAATTTGTGAAAG
AATTAGAGGTAACAGATGATGGTGAAGTCAATGAAGCCAGGACGATTACAGAACTGTTTGGCTGGGCC
TACTTCACCTATACCTTCTCTGGGAAATGTGAGTGAAGTGCATCTGGATCAGTTACACAGCCAAAGAAA
ATTCGAGGAATGGATTTGGAGACATTTTTAAAGAAGGCTCTGTGAAACTTCGGACAAGAACATCCAGTA
GTGAAACAGAAGAGAAAAACCAGAAAAGCCCTTAATCCTACAGTCACTGGGACCCAAAACCTCAGAGTGT
GGAGATAACAAAAACAGATACCGAAGGTAAAATTAAGCTAAAGAATATTGTAGAACATTATTTGCCTAT
GAAGGTAATAAGAGTGAAGTACTTTTAAAGAGGGGGAGATAATCCATTTGATAAGTAAAGGAGACTG
GAGAAGCTGGCTGGTGGAGGGGCGAACTTAATGGTAAAGAAGGAGATTTCCAGACAATTTGCTGTCCA
GATAAATGAAGTGTATAAAGACTTTCCAAAACCAAGAAACCACCACTCCTGCTAAGGCTCCAGCTCCA
AAGCCTGAAGTGTAGCTGCAGAGAAGAAATTTTTCTTTAAAGCCTGAAGAAAAGGATGAAAAATCAA
CACTGGAAACAGAAACCTTCTAAACCAGCAGCTCCACAAGTCCACCCAAAGAAACCTACTCCACCTACCAA
AGCCAGTAATTTATTGAGATCTTCTGGAACAGTGTACCCAAAGCGACTGAAAAACCAAGTTCTCCACCA
CCTCCTATAGCCAAGATTAATGGGGAAGTTTCTAGCATTTCATCAAAATTTGAAACTGAGCCAGTATCAA
AACTAAAGCTAGATTCTGAACAGCTGCCCTTAGACCAAAATCAGTAGACTTTGATTCACTTACAGTAAG
GACCTCCAAGAAACAGATGTTGTAATTTTGTGACATAGCTTCTCAGAAAACCTTGCTTCATCTCACT
GCAAATAGACCAAGATGCCTGGAAGAAGGTTGCCGGCCGTTTCAATGGTGGACATTCTCCAACCTACA
GCCCGGAAAAATCTTGAAGTTACCAAAAAGAAGAAGACAGTGCCAACCTGAAGCCATCTGAATAAAAAA
AGATACATGCTACTCTCAAAGCCATCTGTGTACCTTTCAACACCTTCCAGTGCTTCTAAGCAAATACA
ACTGCTTCTCTGACTCCATTAGAAATCAAAGCTAAAGTGGAAACAGATGATGTGAAAAAAATTCCTGG
ATGAACCTAGAGCCAGATTATTGAATTGTTGTGATTGTAGAAGCACTGAAAAAGGATCACGGGAAAGA
ACTGAAAAAAGCTGCGAAAAGATTTGGAAGAAGAGAAGACAATGAGAAGTAACTAGAGATGGAAATAGAG
AAGCTGAAAAAAGCTGTCTGTCTTCT

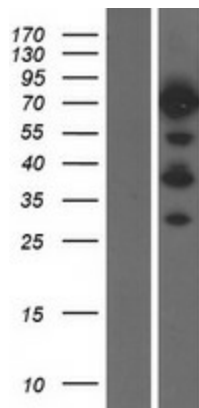
ACGCGTACGCGGCCGCTCGAGCAGAAACTCATCTCAGAAGAGGATCTGGCAGCAATGATATCCTGGATT
ACAAGGATGACGACGATAAGGTTTAA

Reconstitution Method:	<ol style="list-style-type: none">1. Centrifuge at 5,000xg for 5min.2. Carefully open the tube and add 100ul of sterile water to dissolve the DNA.3. Close the tube and incubate for 10 minutes at room temperature.4. Briefly vortex the tube and then do a quick spin (less than 5000xg) to concentrate the liquid at the bottom.5. Store the suspended plasmid at -20°C. The DNA is stable for at least one year from date of shipping when stored at -20°C.
Note:	Plasmids are not sterile. For experiments where strict sterility is required, filtration with 0.22um filter is required.
RefSeq:	NM_012120.3
RefSeq Size:	5425 bp
RefSeq ORF:	1920 bp
Locus ID:	23607
UniProt ID:	Q9Y5K6
Cytogenetics:	6p12.3
Domains:	SH3
Protein Families:	Druggable Genome
MW:	71.3 kDa
Gene Summary:	This gene encodes a scaffolding molecule that regulates the actin cytoskeleton. The protein directly interacts with filamentous actin and a variety of cell membrane proteins through multiple actin binding sites, SH3 domains, and a proline-rich region containing binding sites for SH3 domains. The cytoplasmic protein localizes to membrane ruffles, lipid rafts, and the leading edges of cells. It is implicated in dynamic actin remodeling and membrane trafficking that occurs during receptor endocytosis and cytokinesis. Haploinsufficiency of this gene is implicated in susceptibility to glomerular disease. [provided by RefSeq, Jul 2008]

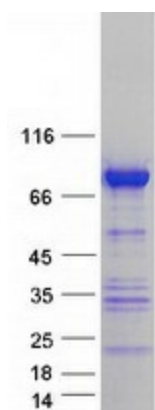
Product images:



Circular map for RC210191



Western blot validation of overexpression lysate (Cat# [LY415971]) using anti-DDK antibody (Cat# [TA50011-100]). Left: Cell lysates from untransfected HEK293T cells; Right: Cell lysates from HEK293T cells transfected with RC210191 using transfection reagent MegaTran 2.0 (Cat# [TT210002]).



Coomassie blue staining of purified CD2AP protein (Cat# [TP310191]). The protein was produced from HEK293T cells transfected with CD2AP cDNA clone (Cat# RC210191) using MegaTran 2.0 (Cat# [TT210002]).