

## Product datasheet for RC210188

### LMX1B (NM\_002316) Human Tagged ORF Clone

#### Product data:

Product Type:	Expression Plasmids
Product Name:	LMX1B (NM_002316) Human Tagged ORF Clone
Tag:	Myc-DDK
Symbol:	LMX1B
Synonyms:	FSGS10; LMX1.2; NPS1
Mammalian Cell Selection:	Neomycin
Vector:	pCMV6-Entry (PS100001)
E. coli Selection:	Kanamycin (25 ug/mL)
ORF Nucleotide Sequence:	>RC210188 representing NM_002316. Blue=ORF Red=Cloning site Green=Tag(s)

```
GCTCGTTTGTAGTGAACCGTCAGAATTTTGTAAACGACTACTATAGGGCGCCGGGAATTCGTCGACTG
GATCCGGTACCGAGGAGATCTGCCGCCGCGATCGCC
ATGTTGGACGGCATCAAGATGGAGGAGCAGCCCTGCGCCCCGGGCCCCGCACTCTGGGGTGTCTGCTG
GGCTCCGACTGCCCGCATCCCGCGTCTGCGAGGGCTGCCAGCGGCCATCTCCGACCGTTCCTGATG
CGAGTCAACGAGTCGTCTGGCACGAGGAGTGTTCAGTGCGCGCGTGTGAGCAAGCCCTCACCACC
AGCTGCTACTTCCGGGATCGGAACTGTACTGCAAACAAGACTACCAACAGCTCTTCGGGCCAAGTGC
AGCGGCTGCATGGAGAAGATCGCCCCACCGAGTTCGTGATGCGGGCGCTGGAGTGCCTGTACCACCTG
GGCTGCTTCTGCTGCTGCTGTGTGAACGGCAGCTACGCAAGGGCGACGAATTCGTGCTCAAGGAGGGC
CAGCTGCTGTGCAAGGGTGACTACGAGAAGGAGAAGGACCTGCTCAGCTCCGTGAGCCCCGACGAGTCC
GACTCCGTGAAGAGCGAGGATGAAGATGGGGACATGAAGCCGGCCAAGGGGCAGGGCAGTCAAGCAAG
GGCAGCGGGGATGACGGGAAGGACCCCGGAGGGCCCAAGCGACCCCGGACCATCCTCACCACGCAGCAG
CGAAGAGCCTTCAAGGCCTCCTTCGAGGTCTCGTGAAGCCTTCCGAAAGGTCCGAGAGACTGGCA
GCTGAGACGGGCTCAGTGTGCGCGTGGTCCAGGTCTGGTTTCAGAACCAAGAGCAAAGATGAAGAAG
CTGGCGCGGGCCACCAGCAGCAGGAGCAGCAGAATCCAGCGGCTGGGCCAGGAGTCTGTCC
AGCCGCATGGAGGGCATGATGGCTTCTACACGCCGCTGGCCCCACCACAGCAGCAGATCGTGGCCATG
GAACAGAGCCCCACGGCAGCAGCAGCCCTTCCAGCAGGGCTCAGCCGCCCAATGCCAGGGAAAC
GACTCCATCTTCCATGACATCGACAGCGATACCTCCTTAACAGCCTCAGCGACTGCTTCTCGGCTCC
TCAGACGTGGGCTCCCTGCAGGCCCGGTGGGAACCCCATCGACCGGCTCTACTCCATGCAGAGTTCC
TACTTCGCCTCC
ACGCGTACGCGGCCGCTCGAGCAGAACTCATCTCAGAAGAGGATCTGGCAGCAATGATATCCTGGAT
TACAAGGATGACGACGATAAGGTTTAAACGGCCGGC
```



[View online »](#)



**Reconstitution Method:**

1. Centrifuge at 5,000xg for 5min.
2. Carefully open the tube and add 100ul of sterile water to dissolve the DNA.
3. Close the tube and incubate for 10 minutes at room temperature.
4. Briefly vortex the tube and then do a quick spin (less than 5000xg) to concentrate the liquid at the bottom.
5. Store the suspended plasmid at -20°C. The DNA is stable for at least one year from date of shipping when stored at -20°C.

**RefSeq:** [NM\\_002316.2](#)

**RefSeq Size:** 5783 bp

**RefSeq ORF:** 1188 bp

**Locus ID:** 4010

**UniProt ID:** [O60663](#)

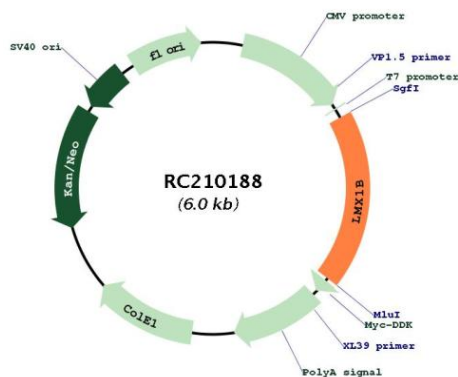
**Cytogenetics:** 9q33.3

**Protein Families:** Transcription Factors

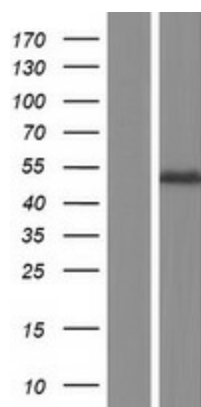
**MW:** 41.6 kDa

**Gene Summary:** This gene encodes a member of LIM-homeodomain family of proteins containing two N-terminal zinc-binding LIM domains, 1 homeodomain, and a C-terminal glutamine-rich domain. It functions as a transcription factor, and is essential for the normal development of dorsal limb structures, the glomerular basement membrane, the anterior segment of the eye, and dopaminergic and serotonergic neurons. Mutations in this gene are associated with nail-patella syndrome. Alternatively spliced transcript variants encoding different isoforms have been found for this gene. [provided by RefSeq, Mar 2010]

### Product images:



Circular map for RC210188



Western blot validation of overexpression lysate (Cat# [LY419399]) using anti-DDK antibody (Cat# [TA50011-100]). Left: Cell lysates from untransfected HEK293T cells; Right: Cell lysates from HEK293T cells transfected with RC210188 using transfection reagent MegaTran 2.0 (Cat# [TT210002]).