

Product datasheet for **RC210183**

GPR101 (NM_054021) Human Tagged ORF Clone

Product data:

Product Type:	Expression Plasmids
Product Name:	GPR101 (NM_054021) Human Tagged ORF Clone
Tag:	Myc-DDK
Symbol:	GPR101
Synonyms:	GPCR6; PAGH2; PITA2
Mammalian Cell Selection:	Neomycin
Vector:	pCMV6-Entry (PS100001)
E. coli Selection:	Kanamycin (25 ug/mL)



[View online »](#)

ORF Nucleotide Sequence:

>RC210183 representing NM_054021
 Red=Cloning site Blue=ORF Green=Tags(s)

TTTTGTAATACGACTCACTATAGGGCGGCCGGAATTCGTCGACTGGATCCGGTACCGAGGAGATCTGCC
 GCC**CGGATCGCC**

ATGACGTCCACCTGCACCAACAGCACGCGCGAGAGTAACAGCAGCCACACGTGCATGCCCTCTCCAAA
 TGCCCATCAGCCTGGCCACGGCATCATCCGCTCAACCGTCTGGTTATCTTCTCGCCGCTCTTTCGT
 CGGCAACATAGTCTGGCGCTAGTGTGACGCGCAAGCCGACGCTGCTGCAGGTACCAACCGTTTTATC
 TTTAACCTCCTCGTCACCGACCTGCTGCAGATTCGCTCGTGGCCCCCTGGGTGGTGGCCACCTCTGTGC
 CTCTCTTCTGGCCCCCAACAGCCACTTCTGCACGGCCCTGGTTAGCCTCACCCACTGTTGCCTTCGC
 CAGCGTCAACACCATTGCTGGTGTGAGTGGATCGCTACTTGTCCATCATCCACCCTCTCTCTACCCG
 TCCAAGATGACCCAGCGCCGGTTACCTGCTCCTCTATGGCACCTGGATTGTGGCCATCTGCAGAGCA
 CTCTCCACTCTACGGCTGGGGCCAGGCTGCCTTTGATGAGCGCAATGCTCTCTGCTCCATGATCTGGG
 GGCCAGCCCCAGCTACACTATTCTCAGCGTGGTGTCTTTCATCGTCACTTCCACTGATTGTCATGATTGCC
 TGCTACTCCGTGGTGTCTGTGCAGCCGGAGGACAGCATGCTCTGCTGTACAATGTCAAGAGACACAGCT
 TGGAAGTGCGAGTCAAGGACTGTGTGGAGAATGAGGATGAAGAGGGAGCAGAGAAGAAGGAGGAGTTCCA
 GGATGAGAGTGAGTTTCGCCGCCAGCATGAAGGTGAGGTCAAGGCCAAGGAGGGCAGAATGGAAGCCAAG
 GACGGCAGCCTGAAGGCCAAGGAAGGAAGCAGCGGGACCAGTGAGAGTAGTGTAGAGGCCAGGGGCAGCG
 AGGAGGTGAGAGAGAGCAGCAGCGTGGCCAGCGCAGGCAGCATGGAGGGTAAGGAAGGCAGCACCAAAGT
 TGAGGAGAACAGCATGAAGGCAGACAAGGGTCGCACAGAGGTCAACCAGTGCAGCATTGACTTGGGTGAA
 GATGACATGGAGTTTGGTGAAGACGACATCAATTCAGTGAGGATGACGTCGAGGCAGTGAACATCCCGG
 AGAGCTCCCACCCAGTCTGCTAACAGCAACAGCAACCCTCCTCTGCCAGGTGCTACCCAGTGCAAAAG
 TGCTAAAGTGATCTTCATCATCATTTTTCTCTATGTGCTATCCCTGGGGCCCTACTGCTTTTTAGCAGTC
 CTGGCCGTGTGGGTGGATGTCGAAACCCAGGTACCCAGTGGGTGATCACCATAATCATCTGGCTTTTCT
 TCCTGCAGTGTGCATCCACCCCTATGTCTATGGCTACATGCACAAGACCATTAAGAAGGAAATCCAGGA
 CATGCTGAAGAAGTTCTTCTGCAAGGAAAAGCCCCGAAAGAAGATAGCCACCCAGACCTGCCCGGAAACA
 GAGGGTGGGACTGAAGGCAAGATTGTCCCTTCTACGATTCTGCTACTTTTCT

ACGGTACGGCGCCGCTCGAGCAGAACTCATCTCAGAAGAGGATCTGGCAGCAAATGATATCCTGGATT
ACAAGGATGACGACGATAAGGTTTAA

Protein Sequence:

>RC210183 representing NM_054021
 Red=Cloning site Green=Tags(s)

MTSTCTNSTRESNSSHTCMPLSKMPISLAHGIIRSTVLVIFLAASFVGNIVLALVLQRKPQLLQVTNRFI
 FNLLVTDLLQISLVAPWVVVATSVPLFWPLNSHFCTALVSLTHLFAFASVNTIVVSVDRYLSIIHPLSYP
 SKMTQRRGYLLL YGTWIVAILQSTPPLYGWQAADFERNALCSMIWGASPSYTIILSVVSFIVIPLIVMIA
 CYSVVFCAARRQHALLYNVKRHSLEVRVKDCVENEDEEGAEEKKEEFQDESEFRRQHEGEVKAKEGRMEAK
 DGSLKAKEGSTGTSESSVEARGSEEVRESSTVASDGSMEGKEGSTKVEENSMKADKGRTEVNVQCSIDLGE
 DDMEFGEDDINFSEDDVEAVNIPESLPPSRNSNSNPPLPRCYQCKAAKVFIIIFSYVLSLGPYCFILAV
 LAVVVDVETQVPQWVITIIIIWLFLLQCCIHPYVYGYMHKTIKKEIQDMLKKFFCKEKPPEKEDSHPDLPGT
 EGGTEGKIVPSYDSATFP

TRTRPLEQKLISEEDLAANDILDYKDDDDKV

Chromatograms:

https://cdn.origene.com/chromatograms/mk8114_c11.zip

Restriction Sites:

Sgfl-Mlul

Cloning Scheme:

ACCN: NM_054021

ORF Size: 1524 bp

OTI Disclaimer: Due to the inherent nature of this plasmid, standard methods to replicate additional amounts of DNA in E. coli are highly likely to result in mutations and/or rearrangements. Therefore, OriGene does not guarantee the capability to replicate this plasmid DNA. Additional amounts of DNA can be purchased from OriGene with batch-specific, full-sequence verification at a reduced cost. Please contact our customer care team at custsupport@origene.com or by calling 301.340.3188 option 3 for pricing and delivery.

The molecular sequence of this clone aligns with the gene accession number as a point of reference only. However, individual transcript sequences of the same gene can differ through naturally occurring variations (e.g. polymorphisms), each with its own valid existence. This clone is substantially in agreement with the reference, but a complete review of all prevailing variants is recommended prior to use. [More info](#)

OTI Annotation: This clone was engineered to express the complete ORF with an expression tag. Expression varies depending on the nature of the gene.

Components: The ORF clone is ion-exchange column purified and shipped in a 2D barcoded Matrix tube containing 10ug of transfection-ready, dried plasmid DNA (reconstitute with 100 ul of water).

- Reconstitution Method:**
1. Centrifuge at 5,000xg for 5min.
 2. Carefully open the tube and add 100ul of sterile water to dissolve the DNA.
 3. Close the tube and incubate for 10 minutes at room temperature.
 4. Briefly vortex the tube and then do a quick spin (less than 5000xg) to concentrate the liquid at the bottom.
 5. Store the suspended plasmid at -20°C. The DNA is stable for at least one year from date of shipping when stored at -20°C.

RefSeq: [NM_054021.2](#)

RefSeq Size: 1527 bp

RefSeq ORF: 1527 bp

Locus ID: 83550

UniProt ID: [Q96P66](#)

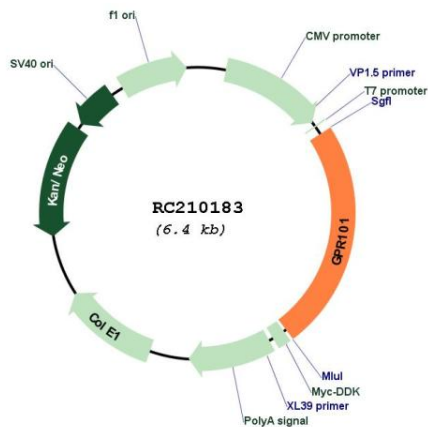
Cytogenetics: Xq26.3

Protein Families: Druggable Genome, GPCR, Transmembrane

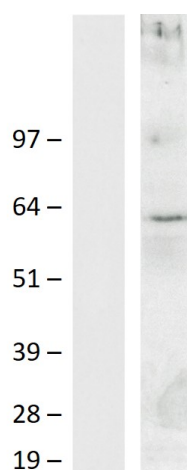
MW: 56.5 kDa

Gene Summary: The protein encoded by this gene is an orphan G protein-coupled receptor of unknown function. The encoded protein is a member of a family of proteins that contain seven transmembrane domains and transduce extracellular signals through heterotrimeric G proteins. [provided by RefSeq, Sep 2011]

Product images:



Circular map for RC210183



Western blot validation of overexpression lysate (Cat# [LY432878]) using anti-DDK antibody (Cat# [TA50011-100]). Left: Cell lysates from untransfected HEK293T cells; Right: Cell lysates from HEK293T cells transfected with RC210183 using transfection reagent MegaTran 2.0 (Cat# [TT210002]).