

## Product datasheet for **RC210181**

### ADAMDEC1 (NM\_014479) Human Tagged ORF Clone

#### Product data:

Product Type:	Expression Plasmids
Product Name:	ADAMDEC1 (NM_014479) Human Tagged ORF Clone
Tag:	Myc-DDK
Symbol:	ADAMDEC1
Synonyms:	M12.219
Mammalian Cell Selection:	Neomycin
Vector:	pCMV6-Entry (PS100001)
E. coli Selection:	Kanamycin (25 ug/mL)



[View online »](#)

**ORF Nucleotide Sequence:**

>RC210181 ORF sequence  
 Red=Cloning site Blue=ORF Green=Tags(s)

TTTTGTAATACGACTCACTATAGGGCGGCCGGAATTCGTGACTGGATCCGGTACCGAGGAGATCTGCC  
 GCC**CGGATCGCC**

ATGCTGCGTGGGATCTCCAGCTACCTGCAGTGGCCACCATGTCTGGGTCTGCTGCCTGTACTTTGGC  
 TCATTGTTCAAACCTCAAGCAATAGCCATAAAGCAAACACCTGAATTAACGCTCCATGAAATAGTTTGTC  
 TAAAAAATTCACATTTTACACAAAAGAGAGATCAAGAACAACCAGACAGAAAAGCATGGCAAAGAGGAA  
 AGGTATGAACCTGAAGTTCAATATCAGATGATCTTAAATGGAGAAGAAATCATTCTCTCCCTACAAAAA  
 CCAAGCACCTCTGGGGCCAGACTACACTGAAACATTGTACTCACCCAGAGGAGAGGAAATACCACGAA  
 ACCTGAGAACATGGAACACTGTTACTATAAAGGAAACATCCTAAATGAAAAGAATTCTGTTGCCAGCATC  
 AGTACTTGTGACGGTTGAGAGGATACTCACACATCATACCAAAGATACCAGATAAAACCTCTGAAAA  
 GCACAGACGAGAAAGAATGCCGTCTTACATCTAACCCAGGAGGAACAAGACCCAGCTAACACACATG  
 TGGTGTGAAGAGCACTGACGGGAAACAAGGCCAATTCGAATCTCTAGATCACTAAAAGCCAGAGAAA  
 GAAGACTTTCTTCGGGCACAGAAATACATTGATCTCTATTTGGTGTGGATAATGCCTTTTATAAGAACT  
 ATAATGAGAATCTAACTCTGATAAGAAGCTTTGTGTTGATGTGATGAACCTACTCAATGTGATATAAA  
 CACCATAGATGTTCAAGTGGCCTTGGTAGGTATGGAAATCTGGTCTGATGGGGATAAGATAAAGGTGGT  
 CCCAGCGCAAGCACACGCTTTGACAACCTCCTGAGATGGCACAGTTCTAACCTGGGGAAAAAGATCCACG  
 ACCATGCTCAGCTTCTCAGCGGGATTAGCTTCAACAATCGACGTGTTGGGACTGGCAGCTTCAAATTCCTT  
 GTGTTCCCATCTTCGGTTGCTGTTATTGAGGCTAAAAAAGAATAATGTGGCTCTTGTAGGAGTGATG  
 TCATGATGAATCAGTATCTGAGTTCAAAATCCCAAAGATTTCAGTACATCTTCCGTCGACATTTTGA  
 AAGATACCTTTTATCTCAGAAACCAAAGTGCCTGCTGCAAGCACCTATTCTACAATATAATGACAACA  
 CCAAGTGTGGGAACCACCTTCTAGAAGTGGGAGAAGACTGTGATTGTGGCTCTCCTAAGGAGTGTACCA  
 ATCTCTGCTGTGAAGCCCTAACGTGAAACTGAAGCTGGAAGTATTGCGGAGGAGATGCTCAAACCA  
 TACCACAGAG

**ACGCGT**ACGCGGCCGCTCGAGCAGAAACTCATCTCAGAAGAGGATCTGGCAGCAAATGATATCCTGGATT  
 ACAAGGATGACGACGATAAGGTTTAA

**Protein Sequence:**

>RC210181 protein sequence  
 Red=Cloning site Green=Tags(s)

MLRGISQLPAVATMSWLLPVLWLIVQTQAIAIKQTPELTLHEIVCPKHLHLHKREIKNNQTEKHGKEE  
 RYEPEVQYQMILNGEEIILSLQTKHLLGPDYTETLYSPRGEEITTKPENMEHCYKGNILNEKNSVASI  
 STCDGLRGYFTHHHQRYQIKPLKSTDEKEHAVFTSNQEEQDPANHTCGVKSTDGKQGPPIRISRLKSPEK  
 EDFLRAQKYIDLVLVDNAFYKNYNENLTLIRSFVFDVMNLLNVIYNTIDVQVALVGMEIWSGDGKIKVV  
 PSASTTFDNFLRWSSNLGKKIHDHAQLLSGISFNRRVGLAASNLSLSPSSVAVIEAKKKNVALVGVM  
 SHELGHVLGMPDVPFNTKCPSPGSCVMNQYLSSKFPKDFSTSCRAHFERYLLSQPKCLLQAPIPTNIMTT  
 PVCNHLLEVGEDCDGSPKECTNLCEALTCKLKPDTDCGGDAPNHTTE

**TR**TRPLEQKLISEEDLAANDILDYKDDDDKV

**Chromatograms:**

[https://cdn.origene.com/chromatograms/mk6766\\_c08.zip](https://cdn.origene.com/chromatograms/mk6766_c08.zip)

**Restriction Sites:**

Sgfl-MluI

**Cloning Scheme:**


**ACCN:** NM\_014479

**ORF Size:** 1410 bp

**OTI Disclaimer:** The molecular sequence of this clone aligns with the gene accession number as a point of reference only. However, individual transcript sequences of the same gene can differ through naturally occurring variations (e.g. polymorphisms), each with its own valid existence. This clone is substantially in agreement with the reference, but a complete review of all prevailing variants is recommended prior to use. [More info](#)

**OTI Annotation:** This clone was engineered to express the complete ORF with an expression tag. Expression varies depending on the nature of the gene.

**Components:** The ORF clone is ion-exchange column purified and shipped in a 2D barcoded Matrix tube containing 10ug of transfection-ready, dried plasmid DNA (reconstitute with 100 ul of water).

**Reconstitution Method:**

1. Centrifuge at 5,000xg for 5min.
2. Carefully open the tube and add 100ul of sterile water to dissolve the DNA.
3. Close the tube and incubate for 10 minutes at room temperature.
4. Briefly vortex the tube and then do a quick spin (less than 5000xg) to concentrate the liquid at the bottom.
5. Store the suspended plasmid at -20°C. The DNA is stable for at least one year from date of shipping when stored at -20°C.

**Note:** Plasmids are not sterile. For experiments where strict sterility is required, filtration with 0.22um filter is required.

**RefSeq:** [NM\\_014479.3](#), [NP\\_055294.1](#)

**RefSeq Size:** 2348 bp

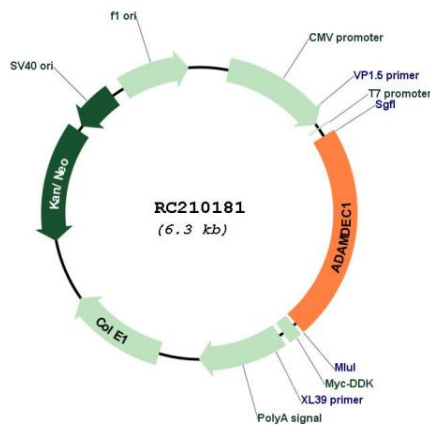
**RefSeq ORF:** 1413 bp

**Locus ID:** 27299

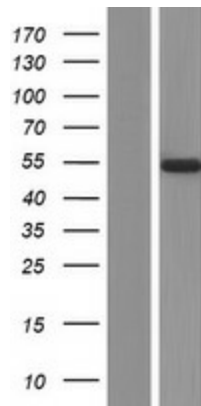
**UniProt ID:** [O15204](#)  
**Cytogenetics:** 8p21.2  
**Protein Families:** Druggable Genome, Secreted Protein  
**MW:** 52.8 kDa

**Gene Summary:** This encoded protein is thought to be a secreted protein belonging to the disintegrin metalloproteinase family. Its expression is upregulated during dendritic cells maturation. This protein may play an important role in dendritic cell function and their interactions with germinal center T cells. [provided by RefSeq, Jul 2008]

### Product images:



Circular map for RC210181



Western blot validation of overexpression lysate (Cat# [LY415238]) using anti-DDK antibody (Cat# [TA50011-100]). Left: Cell lysates from untransfected HEK293T cells; Right: Cell lysates from HEK293T cells transfected with RC210181 using transfection reagent MegaTran 2.0 (Cat# [TT210002]).