

Product datasheet for **RC210176**

KRT86 (NM_002284) Human Tagged ORF Clone

Product data:

Product Type:	Expression Plasmids
Product Name:	KRT86 (NM_002284) Human Tagged ORF Clone
Tag:	Myc-DDK
Symbol:	KRT86
Synonyms:	Hb1; HB6; hHb6; KRTHB1; KRTHB6; MNX
Mammalian Cell Selection:	Neomycin
Vector:	pCMV6-Entry (PS100001)
E. coli Selection:	Kanamycin (25 ug/mL)



[View online »](#)

ORF Nucleotide Sequence:

>RC210176 ORF sequence
 Red=Cloning site Blue=ORF Green=Tags(s)

TTTTGTAATACGACTCACTATAGGGCGGCCGGAATTCGTCGACTGGATCCGGTACCGAGGAGATCTGCC
 GCC**CGGATCGCC**

ATGACTTGTGGATCTTACTGTGGTGGCCGCGCCTTCAGCTGCATCTCGGCCTGCGGGCCCGGCCGGCC
 GCTGCTGCATCACGCGCCGCCCTACCGTGGCATCTCCTGCTACCGCGGCCTCACCGGGGCTTCGCGCAG
 CCACAGCGTGTGCGGAGGCTTTCGGGCCGGCTCCTGCGGACGAGCTTCGGCTACCGCTCCGGGGCGGTG
 TCGGGGCCAGTCCCCATGCATCACACCCTGTGGTCAACGAGAGCCTCCTCACGCCCTCAACCTGG
 AGATCGACCCCAACGCGCAGTGCCTGAAGCAGGAGGAGAAGGAGCAGATCAAGTCCCTCAACAGCAGGTT
 CGCGGCCCTTCATCGACAAGGTGCGCTTCTGGAGCAGCAGAACTGCTGGAGACAAAGTGCAGTTC
 TACCAGAACCGGAGTGTGCCAGAGCAACCTGGAGCCCTGTTGAGGGCTACATCGAGACTCTGCGGC
 GGGAGGCCGAGTGCCTGGAGGCCGACAGCGGGAGGCTGGCCTCAGAGCTTAACCACGTGCAGGAGGTGCT
 GGAGGGCTACAAGAAGAAGTATGAGGAGGAGTTCTCTGAGAGCAACAGCTGAGAACGAGTTTGTGGCT
 CTGAAGAAGGATGTGGACTGCGCCTACCTCCGCAAATCAGACCTGGAGGCCAATGTGGAGGCCCTGATCC
 AGGAGATCGACTTCTGAGGCGGCTGTATGAGGAGGAGATCCGCGTTCTCCAGTCCCACATCTCAGACAC
 CTCCGTGGTTGTCAAGCTGGACAACAGCCGGGACCTGAACATGGACTGCATCATTGCCGAGATCAAGGCA
 CAGTACGATGACATTGTACCCGTAGCCGGGCTGAGGCCGAGTCTGGTACCGCAGCAAGTGTGAGGAGA
 TGAAGGCCACGGTGTACAGGCACGGGAGACCTGCGCCGACCAAGGAGGAGATCAACGAGCTGAACCG
 CATGATCCAGAGGCTGACGGCTGAGGTGGAGAA TGCCAAGTGCCAGAATTCCAAGCTGGAGGCTGCGGTG
 GCTCAGTCTGAGCAGCAGGCTGAGGCCGCCCTCAGCGATGCCCGCTGCAAGTTGGCCGAGCTGGAGGGTG
 CCCTGCAGAAAGCCAAGCAGGACATGGCCTGCCTGATCAGGGAGTACCAGGAGGTGATGAATCCAAAGT
 GGGCCTGGACATCGAGATCGCCACCTACAGCGCCTGCTGGAGGGCAGGAGCAGAGGCTGTGCGAGGGC
 GTCGGCTCGGTGAATGTCTGCGTCAGCAGCTCCCGCGGTGGCGTTGTCTGTGGGATCTCTGCGCCTCCA
 CTACTGCCCTGTTGTCTCCACCAGAGTCAGTAGCGTCCCGCAGCAACAGCAACGTGGTGGTGGGACTAC
 TAACGCTGCGCCCCCTCCGCCGGTTGGCGTCTGCGGCGGAGCTGTAAGAGGTGC

ACGCGTACGCGGCCGCTCGAGCAGAACTCATCTCAGAAGAGGATCTGGCAGCAAATGATATCCTGGATT
 ACAAGGATGACGACGATAAGGTTTAA

Protein Sequence:

>RC210176 protein sequence
 Red=Cloning site Green=Tags(s)

MTCGSYCGGRAFSGISACGPRPGRCCITAAPYRGISCYRGLTGGFGSHSVCGGFRAGSCGRSFGYRSGGV
 CGPSPPCITTVSVNESLLTPLNLEIDPNAQCVKQEEKEQIKSLNSRFAAFIDKVRFLQNNKLETKLQF
 YQNRECCQSNLEPLFEGYIETLRREAECVEADSGRLASELNHVQEVLEGYKKKYEEVSLRATAENEFVA
 LKKDVDCAYLRKSDLEANVEALIQEIDFLRRLYEEEIRVLQSHISDTSVVVKLDNSRDLMDCIIAEIKA
 QYDDIVTRSRAEAEESWYRSKCEEMKATVIRHGETLRRTKEEINELNRMIQRLTAEVENAKCQNSKLEAAV
 AQSEQQGEAALSDARCKLAELEGALQKAKQDMACLI REYQEVMSKLGLDIEIATYRRLLEGEEQRLCEG
 VGSVNVCVSSSRGGVVCGLCASTTAPVVSTRVSSVPSNSNVVVGTNACAPSARVGVCGGCKRC

TRTRPLEQKLI SEEDLAANDILDYKDDDDKV

Chromatograms:

https://cdn.origene.com/chromatograms/mk6589_d11.zip

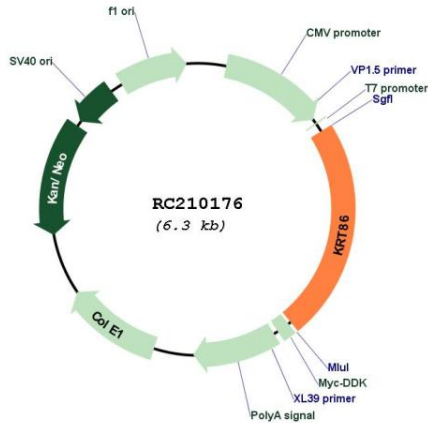
Restriction Sites:

Sgfl-Mlul

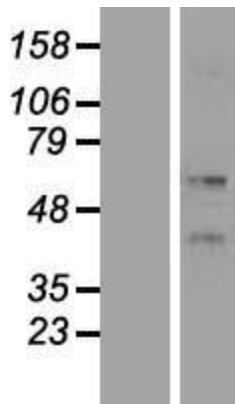
Gene Summary:

This gene encodes a type II keratin protein, which heterodimerizes with type I keratins to form hair and nails. This gene is present in a cluster of related genes and pseudogenes on chromosome 12. Mutations in this gene have been observed in patients with the hair disease monilethrix. [provided by RefSeq, Feb 2016]

Product images:



Circular map for RC210176



Western blot validation of overexpression lysate (Cat# [LY419436]) using anti-DDK antibody (Cat# [TA50011-100]). Left: Cell lysates from untransfected HEK293T cells; Right: Cell lysates from HEK293T cells transfected with RC210176 using transfection reagent MegaTran 2.0 (Cat# [TT210002]).