

## Product datasheet for **RC210171**

### Calcitonin receptor (CALCR) (NM\_001742) Human Tagged ORF Clone

#### Product data:

Product Type:	Expression Plasmids
Product Name:	Calcitonin receptor (CALCR) (NM_001742) Human Tagged ORF Clone
Tag:	Myc-DDK
Symbol:	Calcitonin receptor
Synonyms:	CRT; CT-R; CTR; CTR1
Mammalian Cell Selection:	Neomycin
Vector:	pCMV6-Entry (PS100001)
E. coli Selection:	Kanamycin (25 ug/mL)



[View online »](#)

**ORF Nucleotide Sequence:**

>RC210171 representing NM\_001742  
 Red=Cloning site Blue=ORF Green=Tags(s)

TTTTGTAATACGACTCACTATAGGGCGGCCGGAATTCGTCGACTGGATCCGGTACCGAGGAGATCTGCC  
 GCC**CGCATCGCC**

ATGAGGTTACATTTACAAGCCGGTGTGGCACTGTTTCTTCTTAATCACCAACCCCAATTCTTC  
 CTGCCTTTTCAAATCAAACCTATCCAACAATAGAGCCCAAGCATTTCCTTACGTCGTAGGACGAAAGAA  
 GATGATGGATGCACAGTACAATGCTATGACCGAATGCAGCAGTTACCCGCATACCAAGGAGAAGGTCCA  
 TATTGCAATCGCACCTGGGATGGATGGCTGTGCTGGGATGACACACCGGCTGGAGTATTGCCTATCAGT  
 TCTGCCAGATTATTTCCGGATTTTGTCCATCAGAAAAGGTTACAAAATACTGTGATGAAAAGGTGT  
 TTGGTTTAAACATCCTGAAAACAATCGAACCTGGTCCAATACTATGTGCAATGCTTTCCTCCTGAG  
 AAAGTGAAGAATGCATATGTTCTGTACTATTTGGCTATTGTGGGTCACTTTGTCAATTTTCCCTAG  
 TGATTTCCCTGGGATTTTCGTGTTTTTTCAGGAGCCTTGGCTGCCAAAGGTAACCCTGCACAAGAAT  
 GTTTCTTACTTACATTCTGAATTCTATGATTATCATCATCCACCTGGTTGAAGTAGTACCAATGGAGAG  
 CTCGTGCGAAGGGACCCGGTGAAGCTGCAAGATTTTGCATTTTTTCCACCAAGTACATGATGGCCTGCAACT  
 ATTTCTGGATGCTCTGTGAAGGGATCTATCTTACACTCATTGTGCTGGCTGTGTTTACTGAGAAGCA  
 ACGCTTGGCGTGTATTATCTCTTGGGCTGGGGTTCCCGCTGGTGCCAACCACTATCCATGCTATTACC  
 AGGGCCGTGACTTCAATGACAACCTGCTGGCTGAGTGTGGAACCCATTTGCTTTACATAATCCATGGAC  
 CTGTGATGGCGGCACTTGTGGTCAATTTCTTCTTTTGTCAACATTGTCGGGTGCTTGTGACCAAAAT  
 GAGGGAACCCATGAGGCGGAATCCACATGTACCTGAAGGCTGTGAAGGCCACCATGATCCTTGTGCC  
 CTGCTGGGAATCCAGTTTGTGCTTTCCCTGGAGACCTTCCAACAAGATGCTTGGGAAGATATATGATT  
 ACGTGTGCACTCTGATTCATTTCCAGGGCTTCTTTGTGCGACCATCTACTGCTTGTGCAACAATGA  
 GGTCCAAACCACCGTGAAGCGCCAATGGGCCAATTCAAAATTCAGTGAACCAAGCGTTGGGGGAGGCGC  
 CCCTCCAACCGCTCTGCTCGCGCTGCAGCCGCTGCTGCGGAGGCTGGCGACATCCCAATTTACATCTGCC  
 ATCAGGAGCTGAGGAATGAACCAAGCAACAACCAAGGCGAGGAGTGTGAGATCATCCCTTTGAATAT  
 CATAGAGCAAGAGTCATCTGCT

**ACCGGTACGCGGCCGCTCGAGCAGAACTCATCTCAGAAGAGGATCTGGCAGCAATGATATCCTGGATT  
 ACAAGGATGACGACGATAAGGTTTAA**

**Protein Sequence:**

>RC210171 representing NM\_001742  
 Red=Cloning site Green=Tags(s)

MRFTFTSRCLALFLLLNHPTPILPAFSNQTYPTIEPKPFLYVVGRRKMMDAQYKCYDRMQQLPAYQGE  
 YCNRTWDGWLWDDTPAGVLSYQFCPDYFPDFPSEKVTKYCDEKGVVFKHPENNRWTSNYTMCNAFTPE  
 KLKNAYVLYLLAIVGHSLIFTLVISLGIFFVFRSLGCQRVTLHKNMFLTYILNSMIIIIHLVEVVPNGE  
 LVRDPVSCILHFFHQYMMACNYFWMLCEGIYHLTLIVVAVFTEKQRLRWYLLGWGFPLVPTTIHAIT  
 RAVYFNDNCWLSVETHLLYIIHGPMMAALVNVFFLLNIVRVLVTKMRETHEAESMYLKAVKATMILVP  
 LLGIQFVVPWRPSNKMLGKIYDYVMHSLIHFQGFVATIYFCNNEVQTTVKRQWAQFKIQWNQRWGR  
 PSNRSARAAAAAAEAGDPIIYICHQELRNEPANNQGEESAEIIPLNIEQESSA

**TRTRPLEQKLISEEDLAANDILDYKDDDDKV**

**Chromatograms:**

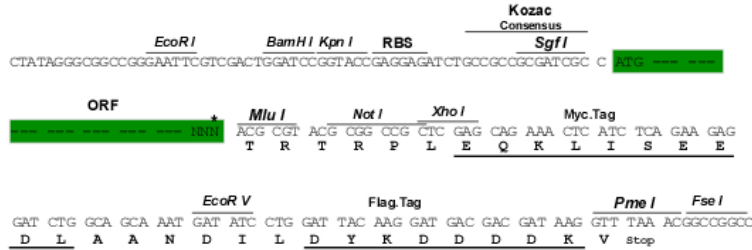
[https://cdn.origene.com/chromatograms/mg2944\\_b01.zip](https://cdn.origene.com/chromatograms/mg2944_b01.zip)

**Restriction Sites:**

Sgfl-Mlul

**Cloning Scheme:**

Cloning sites used for ORF Shutting:



\* The last codon before the Stop codon of the ORF

**ACCN:** NM\_001742

**ORF Size:** 1422 bp

**OTI Disclaimer:** The molecular sequence of this clone aligns with the gene accession number as a point of reference only. However, individual transcript sequences of the same gene can differ through naturally occurring variations (e.g. polymorphisms), each with its own valid existence. This clone is substantially in agreement with the reference, but a complete review of all prevailing variants is recommended prior to use. [More info](#)

**OTI Annotation:** This clone was engineered to express the complete ORF with an expression tag. Expression varies depending on the nature of the gene.

**Components:** The ORF clone is ion-exchange column purified and shipped in a 2D barcoded Matrix tube containing 10ug of transfection-ready, dried plasmid DNA (reconstitute with 100 ul of water).

**Reconstitution Method:**

1. Centrifuge at 5,000xg for 5min.
2. Carefully open the tube and add 100ul of sterile water to dissolve the DNA.
3. Close the tube and incubate for 10 minutes at room temperature.
4. Briefly vortex the tube and then do a quick spin (less than 5000xg) to concentrate the liquid at the bottom.
5. Store the suspended plasmid at -20°C. The DNA is stable for at least one year from date of shipping when stored at -20°C.

**RefSeq:** [NM\\_001742.4](#)
**RefSeq Size:** 3470 bp

**RefSeq ORF:** 1425 bp

**Locus ID:** 799

**UniProt ID:** [P30988](#)
**Cytogenetics:** 7q21.3

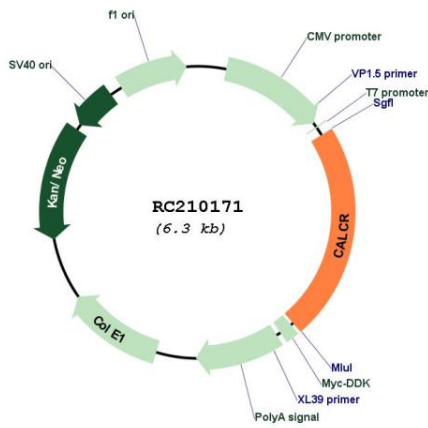
**Protein Families:** Druggable Genome, GPCR, Transmembrane

**Protein Pathways:** Neuroactive ligand-receptor interaction

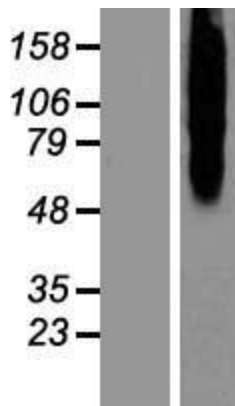
**MW:** 55.34 kDa

**Gene Summary:** This gene encodes a high affinity receptor for the peptide hormone calcitonin and belongs to a subfamily of seven transmembrane-spanning G protein-coupled receptors. The encoded protein is involved in maintaining calcium homeostasis and in regulating osteoclast-mediated bone resorption. Polymorphisms in this gene have been associated with variations in bone mineral density and onset of osteoporosis. Alternate splicing results in multiple transcript variants. [provided by RefSeq, Sep 2009]

**Product images:**



Circular map for RC210171



Western blot validation of overexpression lysate (Cat# [LY431949]) using anti-DDK antibody (Cat# [TA50011-100]). Left: Cell lysates from untransfected HEK293T cells; Right: Cell lysates from HEK293T cells transfected with [RC228921] using transfection reagent MegaTran 2.0 (Cat# [TT210002]).