

Product datasheet for **RC210166**

HRG (NM_000412) Human Tagged ORF Clone

Product data:

Product Type:	Expression Plasmids
Product Name:	HRG (NM_000412) Human Tagged ORF Clone
Tag:	Myc-DDK
Symbol:	HRG
Synonyms:	HPRG; HRGP; THPH11
Mammalian Cell Selection:	Neomycin
Vector:	pCMV6-Entry (PS100001)
E. coli Selection:	Kanamycin (25 ug/mL)



[View online »](#)

ORF Nucleotide Sequence:

>RC210166 ORF sequence
 Red=Cloning site Blue=ORF Green=Tags(s)

TTTTGTAATACGACTCACTATAGGGCGGCCGGAATTCGTCGACTGGATCCGGTACCGAGGAGATCTGCC
 GCC**CGGATCGCC**

ATGAAGGCACTCATTGCAGCACTGCTTTTATGATCACATTGCAGTATTCGTGTGCCGTGAGTCCCAGTACTGACT
 GCAGTGCCTGTTGAGCCGAGGCTGAGAAAAGCTCTAGACCTGATCAATAAAAGCGCACGGGATGGCTACCT
 TTTCCAATTGCTGCGGATTGCTGATGCCCACTTGACAGAGTGGAAAATACAACGTATATTACTTACTAGTC
 TTAGATGTGCAAGAATCGGACTGTTTCGGTCTATCCAGGAAATACTGGAATGACTGTGAGCCACCTGATT
 CCAGACGTCCATCTGAAATAGTGATCGGACAATGTAAGGTAATAGCTACAAGACATTCATGAATCTCA
 GGACCTCAGAGTATTGACTTTAACTGCACCACAAGTTCTGTCTTTCAGCACTGGCCAATACCAAAGAT
 AGTCCGGTCTCATAGATTTCTTTGAGGATACTGAGCGCTACAGAAAACAAGCCAACAAGCCCTTGAGA
 AGTACAAAGAGGAGAATGATGACTTTGCCTCTTTCAGAGTGGACCGAATCGAGAGAGTTGCAAGAGTGAG
 AGGAGGGGAAGGAACTGGTTACTTCGTGGACTTCTGTGCGGAACTGCCCCAGACACCATTTCCCAGAC
 CACCCCAATGTCTTTGGATTCTGCAGAGCAGATTTGTTCTATGATGTAGAAGCCTTGACTTGGAAAAGCC
 CGAAAAACCTTGTCAAACTGTGAAGTCTTCGACCCTCAGGAACATGAGAACATCAATGGTGTACCGCC
 TCATTTGGGACATCCCTTCCACTGGGGTGGGCATGAGCGTTCTTCTACCACCAAGCCTCCATTCAAGCCC
 CATGGATCTAGAGATCATCATATCCCCACAAGCCACACGAACATGGACCCCACTCCTCCAGATGAAA
 GAGTCACTCACATGGACCCCACTTCCACAAGCCCTCCTCCACTATTGCCATGTCTGCTCAAGTTG
 TCAACATGCCACTTTTGGCACAATGGGGCCCAAAGACATTCTCATAATAATAATTCCAGTGACCTCCAT
 CCCATAAGCATCATTCCCATGAACAGCATCCCCACGGACACCCCATGGACACCATCCTCATGACACCCCA
 ATGATACCCATAGACAGCATCCCATGGACACCCCACTGGACACCATCCTCATGACACCCCA
 TGGACACCATCCCATGGACACCATCCCACTGCCATGATTTCCAAGACTATGGACCTTGTGACCCACA
 CCCATAACCAAGTCACTGTTGCCATGGCCACGGCCACCACCTGGGCACTTAAGAAGGCGAGGCCAG
 GTAAAGGACCCCGTCCCTTCCATTGCAGACAAATTGGATCTGTGTACCGACTCCCTCCTCTAAGAAAAGG
 TGAGGTGCTGCCACTTCTGAGGCCAATTTCCAGCTTCCCATTGCCGCACCACAAACATCCTCTAAAG
 CCAGACAATCAGCCCTTCTCAATCAGTCTCTGAATCATGTCCAGGGAAGTTCAAGAGTGGGTTTCCAC
 AAGTTTCCATGTTTTTACACATACATTTCCAAAA

ACGCGTACGCGGCCGCTCGAGCAGAAACTCATCTCAGAAGAGGATCTGGCAGCAAATGATATCCTGGATT
 ACAAGGATGACGACGATAAGGTTTAA

Protein Sequence:

>RC210166 protein sequence
 Red=Cloning site Green=Tags(s)

MKALIAALLLITLQYSCAVSPTDCSAVEPEAEKALDLINKRRRDGYLFQLLRIADAHLDREVNTTYYLV
 LDVQESDCSVLSRKYWNDCEPPDSRRPSEIVIGQCKVIATRHSHESQLRVIDFNCTTSSVSSALANTKD
 SPVLIDFFEDTERYRQANKALEKYKEENDDFASFRVDRIERVARVRGGEGTGYFVDFSVRNCPRHHFPR
 HPNVFGFCRADLFYDVEALDLESPKNLVINCEVDFDQEHENINGVPPHLGHPFHGGHERSSTTKPPFKP
 HGRDHHHPKPHHEHGPPPPDERDHSHPPLPQGPPLPMSCSSCQHATFGTNGAQRHSHNNSSDLH
 PHKHHSHEQHPHGHPHAPHHEHDTHRQHPHGHPHGHPHGHPHGHPHGHPHGHPHCHDFQDYGPCDPP
 PHNQGHCHGHGPPPHLRRRGPKGPRPFHCRQIGSVYRLPPLRKGEVLPPEANFSPFLPHHKHPLK
 PDNQFPFQSVSESCPGKFKSGFPQVSMFFTHTFPK

TRTRPLEQKLISEEDLAANDILDYKDDDDKV

Chromatograms:

https://cdn.origene.com/chromatograms/mk6272_a04.zip

Restriction Sites:

Sgfl-Mlul

Cloning Scheme:


ACCN: NM_000412

ORF Size: 1575 bp

OTI Disclaimer: The molecular sequence of this clone aligns with the gene accession number as a point of reference only. However, individual transcript sequences of the same gene can differ through naturally occurring variations (e.g. polymorphisms), each with its own valid existence. This clone is substantially in agreement with the reference, but a complete review of all prevailing variants is recommended prior to use. [More info](#)

OTI Annotation: This clone was engineered to express the complete ORF with an expression tag. Expression varies depending on the nature of the gene.

Components: The ORF clone is ion-exchange column purified and shipped in a 2D barcoded Matrix tube containing 10ug of transfection-ready, dried plasmid DNA (reconstitute with 100 ul of water).

Reconstitution Method:

1. Centrifuge at 5,000xg for 5min.
2. Carefully open the tube and add 100ul of sterile water to dissolve the DNA.
3. Close the tube and incubate for 10 minutes at room temperature.
4. Briefly vortex the tube and then do a quick spin (less than 5000xg) to concentrate the liquid at the bottom.
5. Store the suspended plasmid at -20°C. The DNA is stable for at least one year from date of shipping when stored at -20°C.

RefSeq: [NM_000412.5](#)

RefSeq Size: 2015 bp

RefSeq ORF: 1578 bp

Locus ID: 3273

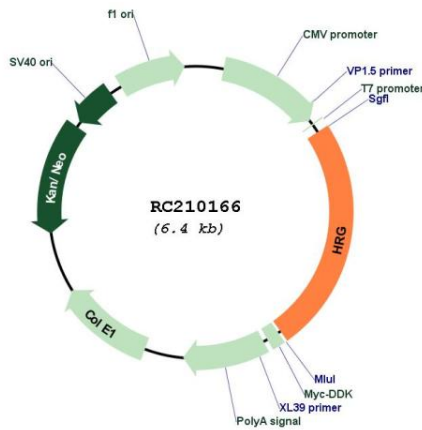
UniProt ID: [P04196](#)

Cytogenetics: 3q27.3

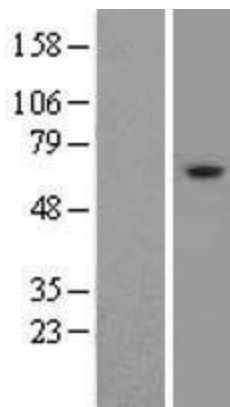
Domains: CY
Protein Families: Secreted Protein
MW: 59.6 kDa

Gene Summary: This histidine-rich glycoprotein contains two cystatin-like domains and is located in plasma and platelets. The physiological function has not been determined but it is known that the protein binds heme, dyes and divalent metal ions. The encoded protein also has a peptide that displays antimicrobial activity against *C. albicans*, *E. coli*, *S. aureus*, *P. aeruginosa*, and *E. faecalis*. It can inhibit rosette formation and interacts with heparin, thrombospondin and plasminogen. Two of the protein's effects, the inhibition of fibrinolysis and the reduction of inhibition of coagulation, indicate a potential prothrombotic effect. Mutations in this gene lead to thrombophilia due to abnormal histidine-rich glycoprotein levels. [provided by RefSeq, Nov 2014]

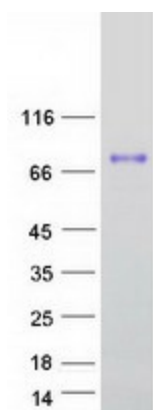
Product images:



Circular map for RC210166



Western blot validation of overexpression lysate (Cat# [LY424735]) using anti-DDK antibody (Cat# [TA50011-100]). Left: Cell lysates from untransfected HEK293T cells; Right: Cell lysates from HEK293T cells transfected with RC210166 using transfection reagent MegaTran 2.0 (Cat# [TT210002]).



Coomassie blue staining of purified HRG protein (Cat# [TP310166]). The protein was produced from HEK293T cells transfected with HRG cDNA clone (Cat# RC210166) using MegaTran 2.0 (Cat# [TT210002]).