

Product datasheet for RC210163

S1PR2 (NM_004230) Human Tagged ORF Clone

Product data:

Product Type:	Expression Plasmids
Product Name:	S1PR2 (NM_004230) Human Tagged ORF Clone
Tag:	Myc-DDK
Symbol:	S1PR2
Synonyms:	AGR16; DFNB68; EDG-5; EDG5; Gpcr13; H218; LPB2; S1P2
Mammalian Cell Selection:	Neomycin
Vector:	pCMV6-Entry (PS100001)
E. coli Selection:	Kanamycin (25 ug/mL)
ORF Nucleotide Sequence:	>RC210163 ORF sequence Red=Cloning site Blue=ORF Green=Tags(s)

TTTTGTAATACGACTCACTATAGGGCGGCCGGAATTCGTCGACTGGATCCGGTACCGAGGAGATCTGCC
GCC**CGATCGCC**

ATGGGCAGCTTGTACTCGGAGTACCTGAACCCCAACAAGGTCCAGGAACACTATAATTATACCAAGGAGA
CGCTGGAAACGCAGGAGACGACCTCCCGCCAGGTGGCCTCGGCCCTTCATCGTCATCCTCTGTTGCGCCAT
TGTGGTGGAAAACCTTCTGGTGTCTATTGCGGTGGCCGAAACAGCAAGTCCACTCGGCAATGTACCTG
TTTCTGGGCAACCTGGCCGCTCCGATCTACTGGCAGGCGTGGCCTTCGTAGCCAATACCTTGCTCTCTG
GCTCTGTCACGCTGAGGCTGACGCTGTGCAGTGGTTTGCCCGGAGGGCTCGCCTTCATCAGCTCTC
GGCCTCTGCTTTCAGCCTCCTGGCCATCGCCATTGAGCGCCACGTGGCCATTGCCAAGGTCAAGCTGAT
GGCAGCGACAAGAGCTGCCGATGCTTCTGCTCATCGGGCCTCGTGGCTCATCTCGCTGGTCTCGGTG
GCCTGCCCATCCTTGGCTGGAAGTGCCTGGGCCACCTCGAGGCCTGCTCCACTGTCTGCCTCTCTACGC
CAAGCATTATGTGCTGTGCGTGGTGACCATCTTCTCCATCATCTGTTGGCCATCGTGGCCCTGTACGTG
CGCATCTACTGCGTGGTCCGCTCAAGCCACGCTGACATGGCCGCCCGCAGACGCTAGCCCTGCTCAAGA
CGGTACCATCGTGTAGGCGTCTTTATCGTCTGCTGGTGGCCGCTTCAGCATCTCCTTCTGGACTA
TGCTGTCCCGTCACTCCTGCCGATCCTCTACAAAGCCCACTACTTTTTCGCCGTCTCCACCCCTGAAT
TCCCTGCTCAACCCGTCATCTACAGTGGCGCAGCCGGGACCTGCGGCGGGAGGTCTTCGGCCGCTGC
AGTGTGGAGGCCGGGGTGGGGTGAAGGACGAGGCGGGGGGACCCCGGGCCACCACTCCTGCC
ACTCCGACAGTCCAGCTCCCTGGAGAGGGCATGCACATGCCACGTACCCACGTTTCTGGAGGGCAAC
ACGGTGGTCTG

ACGCGTACGCGGCCGCTCGAGCAGAAACTCATCTCAGAAGAGGATCTGGCAGCAATGATATCCTGGATT
ACAAGGATGACGACGATAAGGTTAA



[View online »](#)

Protein Sequence: >RC210163 protein sequence
Red=Cloning site Green=Tags(s)

MGSLYSEYLNPNKVQEHYNYTKETLETQETTSRQVASAFIVILCCAIVVENLLVLIAVARNKSFHSAMYL
 FLGNLAASDLLAGVAFVANTLLSGSVTLRLTPVQWFAREGSAFITLSASVFSLLAIAIERHVAIAKVLY
 GSDKSCRMLLLIGASWLSLVLGGLPILGWNCLGHLEACSTVLPYAKHYVLCVVTIFSIILLAIIVALYV
 RIYCVVRSSHADMAAPQTLALLKTVTIVLGVFIVCWLPAFSILLLDYACPVHSCPILYKAHYFFAVSTLN
 SLLNPIYITWRSRDLRREVLRLPLQCWRPGVGVQGRRRGGTPGHLLPLRSSSSLERGMHMPTSPTFLEGN
 TVV

TRTRPLEQKLISEEDLAANDILDYKDDDDKV

Chromatograms: https://cdn.origene.com/chromatograms/mk6270_f09.zip

Restriction Sites: SgfI-MluI

Cloning Scheme:



* The last codon before the Stop codon of the ORF

ACCN: NM_004230

ORF Size: 1061 bp

OTI Disclaimer: The molecular sequence of this clone aligns with the gene accession number as a point of reference only. However, individual transcript sequences of the same gene can differ through naturally occurring variations (e.g. polymorphisms), each with its own valid existence. This clone is substantially in agreement with the reference, but a complete review of all prevailing variants is recommended prior to use. [More info](#)

OTI Annotation: This clone was engineered to express the complete ORF with an expression tag. Expression varies depending on the nature of the gene.

Components: The ORF clone is ion-exchange column purified and shipped in a 2D barcoded Matrix tube containing 10ug of transfection-ready, dried plasmid DNA (reconstitute with 100 ul of water).

Reconstitution Method:

1. Centrifuge at 5,000xg for 5min.
2. Carefully open the tube and add 100ul of sterile water to dissolve the DNA.
3. Close the tube and incubate for 10 minutes at room temperature.
4. Briefly vortex the tube and then do a quick spin (less than 5000xg) to concentrate the liquid at the bottom.
5. Store the suspended plasmid at -20°C. The DNA is stable for at least one year from date of shipping when stored at -20°C.

Note: Plasmids are not sterile. For experiments where strict sterility is required, filtration with 0.22um filter is required.

RefSeq: [NM_004230.4](#)

RefSeq Size: 3589 bp

RefSeq ORF: 1062 bp

Locus ID: 9294

UniProt ID: [O95136](#)

Cytogenetics: 19p13.2

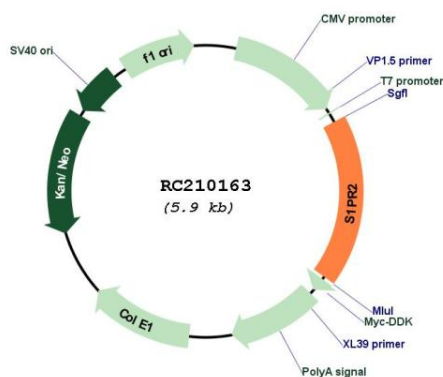
Protein Families: Druggable Genome, GPCR, Transmembrane

Protein Pathways: Neuroactive ligand-receptor interaction

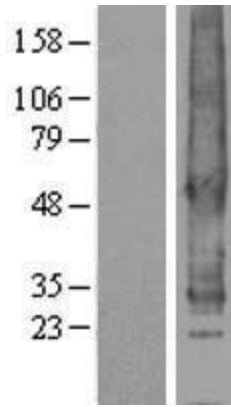
MW: 38.9 kDa

Gene Summary: This gene encodes a member of the G protein-coupled receptors, as well as the EDG family of proteins. The encoded protein is a receptor for sphingosine 1-phosphate, which participates in cell proliferation, survival, and transcriptional activation. Defects in this gene have been associated with congenital profound deafness. [provided by RefSeq, Mar 2016]

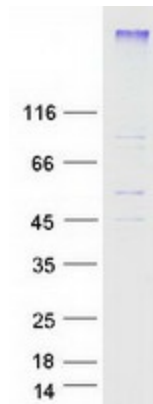
Product images:



Circular map for RC210163



Western blot validation of overexpression lysate (Cat# [LY418131]) using anti-DDK antibody (Cat# [TA50011-100]). Left: Cell lysates from untransfected HEK293T cells; Right: Cell lysates from HEK293T cells transfected with RC210163 using transfection reagent MegaTran 2.0 (Cat# [TT210002]).



Coomassie blue staining of purified S1PR2 protein (Cat# [TP310163]). The protein was produced from HEK293T cells transfected with S1PR2 cDNA clone (Cat# RC210163) using MegaTran 2.0 (Cat# [TT210002]).