

## Product datasheet for RC210160

### CELA1 (NM\_001971) Human Tagged ORF Clone

#### Product data:

Product Type:	Expression Plasmids
Product Name:	CELA1 (NM_001971) Human Tagged ORF Clone
Tag:	Myc-DDK
Symbol:	CELA1
Synonyms:	ELA1
Mammalian Cell Selection:	Neomycin
Vector:	pCMV6-Entry (PS100001)
E. coli Selection:	Kanamycin (25 ug/mL)
ORF Nucleotide Sequence:	>RC210160 representing NM_001971 Red=Cloning site Blue=ORF Green=Tags(s)

TTTTGTAATACGACTCACTATAGGGCGCCGGGAATTCGTCGACTGGATCCGGTACCGAGGAGATCTGCC  
GCC**CGATCGCC**

ATGCTGGTCTTTATGGACACAGCACCCAGGACCTCCGGAAACCAATGCCCGCTAGTCGGAGGGACTG  
AGGCCGGGAGGAATTCCTGGCCCTCTCAGATTTCCCTCCAGTACCGGTCTGGAGGTTCCCGGTATCACAC  
CTGTGGAGGGACCCTTATCAGACAGAACTGGGTGATGACAGCTGCTCACTGCGTGGATTACCAGAAGACT  
TTCCGCGTGGTGGCTGGAGACCATAACCTGAGCCAGAATGATGGCACTGAGCAGTACGTGAGTGTGCAGA  
AGATCGTGGTGCATCCATACTGGAACAGCGATAACGTGGCTGCCGGCTATGACATCGCCCTGCTGCGCCT  
GGCCAGAGCGTTACCCTCAATAGCTATGTCCAGCTGGGTGTTCTGCCCCAGGAGGGAGCCATCCTGGCT  
AACAAACAGTCCCTGCTACATCACAGGCTGGGGCAAGACCAAGACCAATGGGCAGCTGGCCAGACCCCTGC  
AGCAGGCTTACCTGCCCTCTGTGGACTACGCCATCTGCTCCAGCTCCTCCTACTGGGGCTCCACTGTGAA  
GAACACCATGGTGTGTGCTGGTGGAGATGGAGTTCGCTCTGGATGCCAGGGTACTCTGGGGGCCCCCTC  
CATTGCTTGGTGAATGGCAAGTATTCTGTCCATGGAGTGACCAGCTTTGTGTCCAGCCGGGGCTGTAATG  
TCTCCAGGAAGCCTACAGTCTTCACCCAGGTCTCTGCTTACATCTCCTGGATAAAATGTCATCGCCTC  
CAAC

**ACGCGT**ACGCGGCCGCTCGAGCAGAAACTCATCTCAGAAGAGGATCTGGCAGCAAATGATATCCTGGATT  
ACAAGGATGACGACGATAAGGTTTAA



[View online »](#)

**Protein Sequence:** >RC210160 representing NM\_001971  
Red=Cloning site Green=Tags(s)

MLVLYGHSTQDLPETNARVVGTEAGRNSWPSQISLQYRSGGSRYHTCGGTLIRQNWVMTAAHCVDYQKT  
 FRVVAGDHNLSQNDGTEQYVSVQKIVVHPYWNVDNVAAGYDIALLRLAQSVTLNSYVQLGVLVPEGAILA  
 NNSPCYITGWGKTKTNGQLAQLTQQAYLPSVDYAI C S S S S Y W G S T V K N T M V C A G G D G V R S G C Q G D S G G P L  
 HCLVNGKYSVHGVTSFVSSRGCNVS RKPTVFTQVSAYISWINNVIASN

TRTRPLEQKLISEEDLAANDILDYKDDDDKV

**Chromatograms:** [https://cdn.origene.com/chromatograms/ja1511\\_h05.zip](https://cdn.origene.com/chromatograms/ja1511_h05.zip)

**Restriction Sites:** SgfI-MluI

**Cloning Scheme:**



**ACCN:** NM\_001971

**ORF Size:** 774 bp

**OTI Disclaimer:** The molecular sequence of this clone aligns with the gene accession number as a point of reference only. However, individual transcript sequences of the same gene can differ through naturally occurring variations (e.g. polymorphisms), each with its own valid existence. This clone is substantially in agreement with the reference, but a complete review of all prevailing variants is recommended prior to use. [More info](#)

**OTI Annotation:** This clone was engineered to express the complete ORF with an expression tag. Expression varies depending on the nature of the gene.

**Components:** The ORF clone is ion-exchange column purified and shipped in a 2D barcoded Matrix tube containing 10ug of transfection-ready, dried plasmid DNA (reconstitute with 100 ul of water).

**Reconstitution Method:**

1. Centrifuge at 5,000xg for 5min.
2. Carefully open the tube and add 100ul of sterile water to dissolve the DNA.
3. Close the tube and incubate for 10 minutes at room temperature.
4. Briefly vortex the tube and then do a quick spin (less than 5000xg) to concentrate the liquid at the bottom.
5. Store the suspended plasmid at -20°C. The DNA is stable for at least one year from date of shipping when stored at -20°C.

**RefSeq:** [NM\\_001971.6](#)

**RefSeq Size:** 952 bp

**RefSeq ORF:** 777 bp

**Locus ID:** 1990

**UniProt ID:** [Q9UNI1](#)

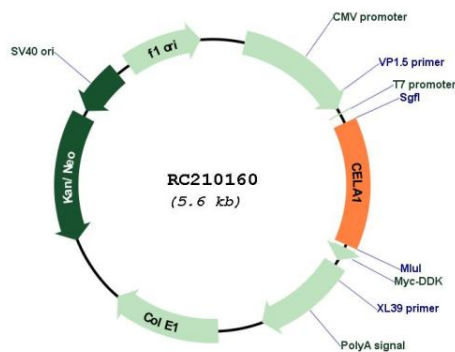
**Cytogenetics:** 12q13.13

**Protein Families:** Druggable Genome, Protease, Secreted Protein

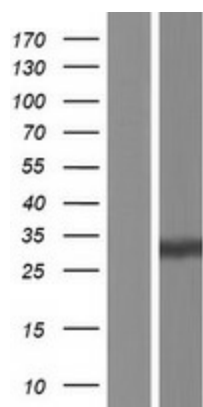
**MW:** 27.6 kDa

**Gene Summary:** Elastases form a subfamily of serine proteases that hydrolyze many proteins in addition to elastin. Humans have six elastase genes which encode the structurally similar proteins elastase 1, 2, 2A, 2B, 3A, and 3B. Unlike other elastases, pancreatic elastase 1 is not expressed in the pancreas. To date, elastase 1 expression has only been detected in skin keratinocytes. Clinical literature that describes human elastase 1 activity in the pancreas or fecal material is actually referring to chymotrypsin-like elastase family, member 3B. [provided by RefSeq, May 2009]

**Product images:**



Circular map for RC210160



Western blot validation of overexpression lysate (Cat# [LY419617]) using anti-DDK antibody (Cat# [TA50011-100]). Left: Cell lysates from untransfected HEK293T cells; Right: Cell lysates from HEK293T cells transfected with RC210160 using transfection reagent MegaTran 2.0 (Cat# [TT210002]).