

Product datasheet for **RC210147**

KLF9 (NM_001206) Human Tagged ORF Clone

Product data:

Product Type:	Expression Plasmids
Tag:	Myc-DDK
Symbol:	KLF9
Synonyms:	BTEB; BTEB1
Mammalian Cell Selection:	Neomycin
Vector:	pCMV6-Entry (PS100001)
E. coli Selection:	Kanamycin (25 ug/mL)
ORF Nucleotide Sequence:	>RC210147 ORF sequence Red=Cloning site Blue=ORF Green=Tags(s)

TTTTGTAATACGACTCACTATAGGGCGGCCGGAATTCGTCGACTGGATCCGGTACCGAGGAGATCTGCC
 GCC**CGATCGCC**

ATGTCCGCGCCGCCTACATGGACTTCGTGGCTGCCAGTGTCTGGTTTCCATTTCTGAACCGCGCTGCGG
 TGCCGGAGCATGGGGTCGCTCCGGACGCCGAGCGGCTGCGACTACCTGAGCGCGAGGTGACCAAGGAGCA
 CGGTGACCCGGGGGACACCTGGAAGGATTACTGCACACTGGTCACCATCGCCAAGAGCTTGTTGGACCTG
 AACAAGTACCGACCCATCCAGACCCCTCCGTGTGCAGCGACAGTCTGGAAAGTCCAGATGAGGATATGG
 GATCCGACAGCGACGTGACCACCGAATCTGGGTCGAGTCCTTCCACAGCCCGGAGGAGAGACAGGATCC
 TGGCAGCGCGCCAGCCCGCTCTCCCTCCTCCATCCTGGAGTGGCTGCGAAGGGGAAACACGCCTCCGAA
 AAGAGGCACAAGTGCCCTACAGTGGCTGTGGGAAAGTCTATGGAAAATCCTCCCATCTCAAAGCCATT
 ACAGAGTGCATACAGGTGAACGGCCCTTCCCTGCACGTGGCCAGACTGCCTTAAAAAGTTCTCCCGCTC
 AGACGAGCTGACCCGCCACTACCGACCCACACTGGGAAAAGCAGTTCCGCTGTCCGCTGTGTGAGAAG
 CGCTTCATGAGGAGTGACCACCTCACAAGCACGCCCGGCGGCACACCGAGTTCACCCACGATGATCA
 AGCGATCGAAAAAGGCGCTGGCCAACGCTTG

ACGCGTACGCGGCCGCTCGAGCAGAACTCATCTCAGAAGAGGATCTGGCAGCAAATGATATCTGGATT
 ACAAGGATGACGACGATAAGGTTTAA


[View online »](#)

Protein Sequence: >RC210147 protein sequence
 Red=Cloning site Green=Tags(s)

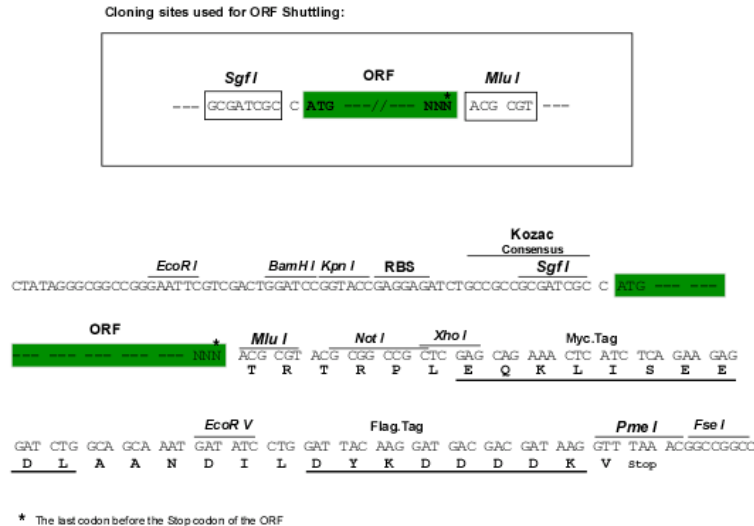
MSAAAYMDFVAAQCLVSI SNRAAVPEHGVAPDAERLRLPEREVTKEHGDPTWKDYCTLVTIAKSLLDL
 NKYRPIQTPSVCSDSLSPDEDMGSDSDVTTESGSSPSHSPERQDPSAPSPLSLLHPGVAAGKHASE
 KRHKCPYSGCGKYVGKSSHLKAHYRVHTGERPFPCTWPDCLKKFSRSDDELTRHYRTHTEKQFRCPLCEK
 RFMRSDHLTKHARRHTEFHPSMIKRSKKALANAL

TRTRPLEQKLISEEDLAANDILDYKDDDDKV

Chromatograms: https://cdn.origene.com/chromatograms/mk6375_d07.zip

Restriction Sites: SgfI-MluI

Cloning Scheme:



ACCN: NM_001206

ORF Size: 732 bp

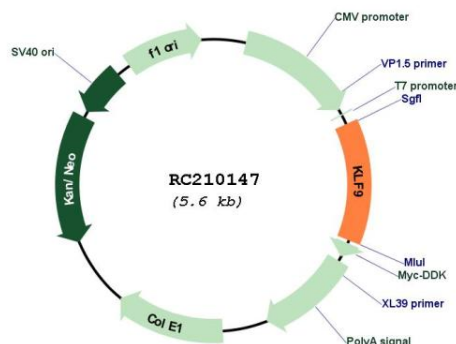
OTI Disclaimer: Due to the inherent nature of this plasmid, standard methods to replicate additional amounts of DNA in E. coli are highly likely to result in mutations and/or rearrangements. Therefore, OriGene does not guarantee the capability to replicate this plasmid DNA. Additional amounts of DNA can be purchased from OriGene with batch-specific, full-sequence verification at a reduced cost. Please contact our customer care team at custsupport@origene.com or by calling 301.340.3188 option 3 for pricing and delivery.

The molecular sequence of this clone aligns with the gene accession number as a point of reference only. However, individual transcript sequences of the same gene can differ through naturally occurring variations (e.g. polymorphisms), each with its own valid existence. This clone is substantially in agreement with the reference, but a complete review of all prevailing variants is recommended prior to use. [More info](#)

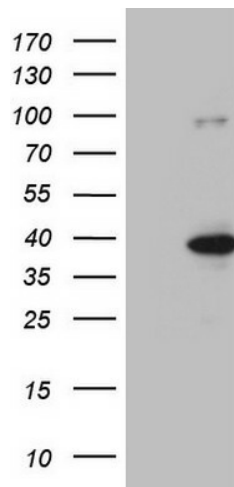
OTI Annotation: This clone was engineered to express the complete ORF with an expression tag. Expression varies depending on the nature of the gene.

Components:	The ORF clone is ion-exchange column purified and shipped in a 2D barcoded Matrix tube containing 10ug of transfection-ready, dried plasmid DNA (reconstitute with 100 ul of water).
Reconstitution Method:	<ol style="list-style-type: none"> 1. Centrifuge at 5,000xg for 5min. 2. Carefully open the tube and add 100ul of sterile water to dissolve the DNA. 3. Close the tube and incubate for 10 minutes at room temperature. 4. Briefly vortex the tube and then do a quick spin (less than 5000xg) to concentrate the liquid at the bottom. 5. Store the suspended plasmid at -20°C. The DNA is stable for at least one year from date of shipping when stored at -20°C.
Note:	Plasmids are not sterile. For experiments where strict sterility is required, filtration with 0.22um filter is required.
RefSeq:	<u>NM_001206.2, NP_001197.1</u>
RefSeq Size:	5208 bp
RefSeq ORF:	735 bp
Locus ID:	687
UniProt ID:	<u>Q13886</u>
Cytogenetics:	9q21.12
MW:	27.2 kDa
Gene Summary:	The protein encoded by this gene is a transcription factor that binds to GC box elements located in the promoter. Binding of the encoded protein to a single GC box inhibits mRNA expression while binding to tandemly repeated GC box elements activates transcription. [provided by RefSeq, Jul 2008]

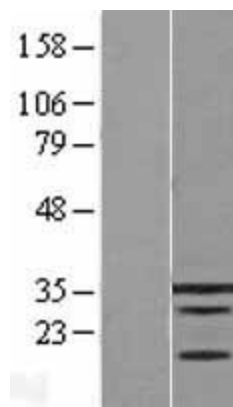
Product images:



Circular map for RC210147



HEK293T cells were transfected with the pCMV6-ENTRY control (Cat# [PS100001], Left lane) or pCMV6-ENTRY KLF9 (Cat# RC210147, Right lane) cDNA for 48 hrs and lysed. Equivalent amounts of cell lysates (5 ug per lane) were separated by SDS-PAGE and immunoblotted with anti-KLF9 (Cat# [TA808444])(1:2000). Positive lysates [LY420066] (100ug) and [LC420066] (20ug) can be purchased separately from OriGene.



Western blot validation of overexpression lysate (Cat# [LY420066]) using anti-DDK antibody (Cat# [TA50011-100]). Left: Cell lysates from untransfected HEK293T cells; Right: Cell lysates from HEK293T cells transfected with RC210147 using transfection reagent MegaTran 2.0 (Cat# [TT210002]).