

Product datasheet for **RC210143**

Mannan Binding Lectin (MBL2) (NM_000242) Human Tagged ORF Clone

Product data:

Product Type:	Expression Plasmids
Product Name:	Mannan Binding Lectin (MBL2) (NM_000242) Human Tagged ORF Clone
Tag:	Myc-DDK
Symbol:	Mannan Binding Lectin
Synonyms:	COLEC1; HSMBPC; MBL; MBL2D; MBP; MBP-C; MBP1; MBPD
Mammalian Cell Selection:	Neomycin
Vector:	pCMV6-Entry (PS100001)
E. coli Selection:	Kanamycin (25 ug/mL)
ORF Nucleotide Sequence:	>RC210143 ORF sequence Red=Cloning site Blue=ORF Green=Tags(s)

TTTTGTAATACGACTCACTATAGGGCGCCGGGAATTCGTCGACTGGATCCGGTACCGAGGAGATCTGCC
GCC**CGATCGCC**

ATGTCCCTGTTTCCATCACTCCCTCTCCTTCTCCTGAGTATGGTGGCAGCGTCTTACTCAGAACTGTGA
CCTGTGAGGATGCCAAAAGACCTGCCCTGCAGTGATTGCCTGTAGCTCTCCAGGCATCAACGGCTTCCC
AGGCAAAGATGGGCGTGATGGCACCAAGGGAGAAAAGGGGAACCAGGCCAAGGGCTCAGAGGCTTACAG
GGCCCCCTGGAAAGTTGGGCTCCAGGAAATCCAGGGCCTTCTGGTCAACAGGACCAAAGGGCCAAA
AAGGAGACCTGGAAAAAGTCCGGATGGTGATAGTAGCCTGGCTGCCTCAGAAAGAAAAGCTCTGCAAC
AGAAATGGCACGTATCAAAAAGTGGCTCACCTTCTCTGGGCAAACAAGTTGGGAACAAGTTCTTCTCTG
ACCAATGGTGAATAATGACCTTTGAAAAAGTGAAGGCCTTGTGTGTCAAGTTCCAGGCCTCTGTGGCCA
CCCCAGGAATGCTGCAGAGAATGGAGCCATTCAGAATCTCATCAAGGAGGAAGCCTTCTGGGCATCAC
TGATGAGAAGACAGAAGGGCAGTTTGTGGATCTGACAGGAAATAGACTGACCTACACAACTGGAACGAG
GGTGAACCAACAATGCTGGTTCTGATGAAGATTGTGTATTGTACTGAAAAATGGCCAGTGAATGACG
TCCCTGCTCCACCTCCCATCTGGCCGTCTGTGAGTTCCTATC

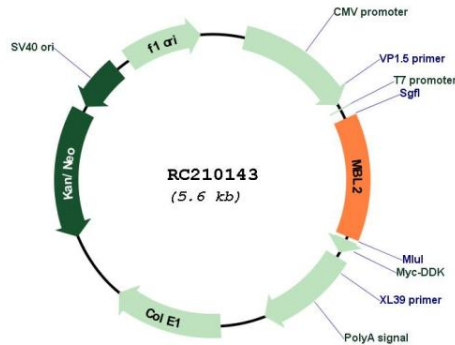
ACGCGTACGCGGCCGCTCGAGCAGAACTCATCTCAGAAGAGGATCTGGCAGCAAATGATATCTGGATT
ACAAGGATGACGACGATAAGGTTTAA



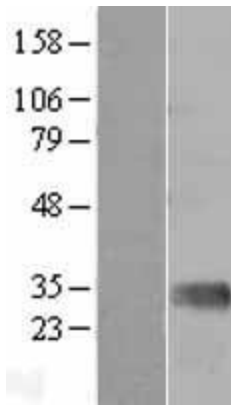
[View online »](#)

Reconstitution Method:	<ol style="list-style-type: none">1. Centrifuge at 5,000xg for 5min.2. Carefully open the tube and add 100ul of sterile water to dissolve the DNA.3. Close the tube and incubate for 10 minutes at room temperature.4. Briefly vortex the tube and then do a quick spin (less than 5000xg) to concentrate the liquid at the bottom.5. Store the suspended plasmid at -20°C. The DNA is stable for at least one year from date of shipping when stored at -20°C.
Note:	Plasmids are not sterile. For experiments where strict sterility is required, filtration with 0.22um filter is required.
RefSeq:	NM_000242.3
RefSeq Size:	3569 bp
RefSeq ORF:	747 bp
Locus ID:	4153
UniProt ID:	P11226
Cytogenetics:	10q21.1
Protein Families:	Druggable Genome
Protein Pathways:	Complement and coagulation cascades
MW:	26.1 kDa
Gene Summary:	This gene encodes the soluble mannose-binding lectin or mannose-binding protein found in serum. The protein encoded belongs to the collectin family and is an important element in the innate immune system. The protein recognizes and binds to mannose and N-acetylglucosamine on many microorganisms, including bacteria, yeast, and viruses including influenza virus, HIV and SARS-CoV. This binding activates the classical complement pathway. Deficiencies of this gene have been associated with susceptibility to autoimmune and infectious diseases. [provided by RefSeq, Jun 2020]

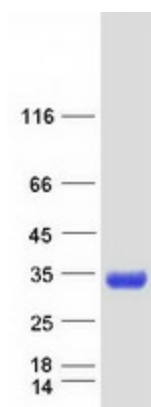
Product images:



Circular map for RC210143



Western blot validation of overexpression lysate (Cat# [LY424849]) using anti-DDK antibody (Cat# [TA50011-100]). Left: Cell lysates from untransfected HEK293T cells; Right: Cell lysates from HEK293T cells transfected with RC210143 using transfection reagent MegaTran 2.0 (Cat# [TT210002]).



Coomassie blue staining of purified MBL2 protein (Cat# [TP310143]). The protein was produced from HEK293T cells transfected with MBL2 cDNA clone (Cat# RC210143) using MegaTran 2.0 (Cat# [TT210002]).