

Product datasheet for **RC210139**

Trypsin (PRSS3) (NM_002771) Human Tagged ORF Clone

Product data:

Product Type:	Expression Plasmids
Product Name:	Trypsin (PRSS3) (NM_002771) Human Tagged ORF Clone
Tag:	Myc-DDK
Symbol:	Trypsin
Synonyms:	MTG; PRSS4; T9; TRY3; TRY4
Mammalian Cell Selection:	Neomycin
Vector:	pCMV6-Entry (PS100001)
E. coli Selection:	Kanamycin (25 ug/mL)
ORF Nucleotide Sequence:	>RC210139 representing NM_002771 Red=Cloning site Blue=ORF Green=Tags(s)

TTTTGTAATACGACTCACTATAGGGCGCCGGGAATTCGTCGACTGGATCCGGTACCGAGGAGATCTGCC
GCC**CGATCGCC**

ATGAATCCATTTCCTGATCCTTGCCTTTGTGGGAGCTGCTGTTGCTGTCCCCTTTGACGATGATGACAAGA
TTGTTGGGGGCTACACCTGTGAGGAGAATTCTCTCCCCTACCAGGTGTCCTGAATTCTGGCTCCCCTT
CTGCGGTGGCTCCCTCATCAGCGAACAGTGGGTGGTATCAGCAGCTCACTGCTACAAGACCCGCATCCAG
GTGAGACTGGGAGAGCACAACATCAAAGTCTGGAGGGGAATGAGCAGTTCATCAATGCGGCCAAGATCA
TCCGCCACCCTAAATACAACAGGGACACTCTGGACAATGACATCATGCTGATCAAACCTCTCTCACCTGC
CGTCATCAATGCCGCGTGTCCACCATCTCTGCCACCGCCCTCCAGCTGCTGGCACTGAGTGCCCTC
ATCTCCGGCTGGGGCAACACTCTGAGCTTTGGTGTGACTACCCAGACGAGCTGAAGTGCCTGGATGCTC
CGGTGCTGACCCAGGCTGAGTGTAAAGCCTCCTACCCTGGAAAGATTACCAACAGCATGTTCTGTGTGGG
CTTCTTGAGGGAGGCAAGGATTCCTGCCAGCGTGACTCTGGTGGCCCTGTGGTCTGCAACGGACAGCTC
CAAGGAGTTGTCTCTGGGGCCATGGCTGTGCCTGGAAGAACAGGCCTGGAGTCTACACCAAGGTCTACA
ACTATGTGGACTGGATTAAGGACACCATCGCTGCCAACAGC

ACGCGTACGCGGCCGCTCGAGCAGAAACTCATCTCAGAAGAGGATCTGGCAGCAAATGATATCCTGGATT
ACAAGGATGACGACGATAAGGTTTAA



[View online »](#)

Protein Sequence: >RC210139 representing NM_002771
 Red=Cloning site Green=Tags(s)

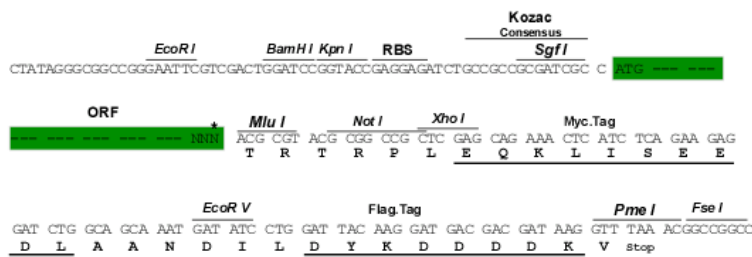
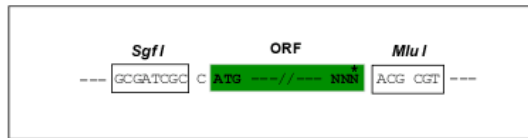
MNPFLLILAFVGA AVAVPFDDDDKIVGGYTCEENSLPYQVSLNSGSHFCGGSLISEQWVVSAAHCYKTRIQ
 VRLGEHNIKVLEGNEQFINAAKIIRHPKYNRDTLDNDIMLIKLSPPAVINARVSTISLPTAPPAAGTECL
 ISGWGNTLSFGADYPDELKCLDAPVLTQAECKASYPGKITNSMFCVGFLEGGKDCQRDSGGPVCNGQL
 QGVVSWGHCWKNRPGVYTKVYNYVDWIKDTIAANS

TRTRPLEQKLISEEDLAANDILDYKDDDDKV

Restriction Sites: SgfI-MluI

Cloning Scheme:

Cloning sites used for ORF Shuttling:



* The last codon before the Stop codon of the ORF

ACCN: NM_002771

ORF Size: 741 bp

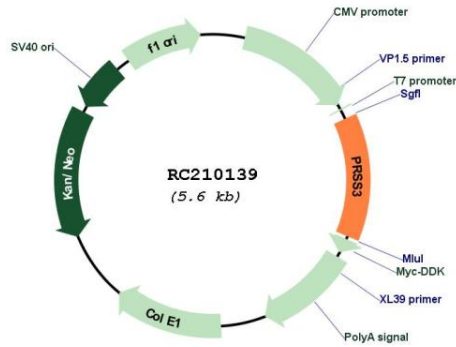
OTI Disclaimer: Due to the inherent nature of this plasmid, standard methods to replicate additional amounts of DNA in E. coli are highly likely to result in mutations and/or rearrangements. Therefore, OriGene does not guarantee the capability to replicate this plasmid DNA. Additional amounts of DNA can be purchased from OriGene with batch-specific, full-sequence verification at a reduced cost. Please contact our customer care team at custsupport@origene.com or by calling 301.340.3188 option 3 for pricing and delivery.

The molecular sequence of this clone aligns with the gene accession number as a point of reference only. However, individual transcript sequences of the same gene can differ through naturally occurring variations (e.g. polymorphisms), each with its own valid existence. This clone is substantially in agreement with the reference, but a complete review of all prevailing variants is recommended prior to use. [More info](#)

OTI Annotation: This clone was engineered to express the complete ORF with an expression tag. Expression varies depending on the nature of the gene.

Components:	The ORF clone is ion-exchange column purified and shipped in a 2D barcoded Matrix tube containing 10ug of transfection-ready, dried plasmid DNA (reconstitute with 100 ul of water).
Reconstitution Method:	<ol style="list-style-type: none">1. Centrifuge at 5,000xg for 5min.2. Carefully open the tube and add 100ul of sterile water to dissolve the DNA.3. Close the tube and incubate for 10 minutes at room temperature.4. Briefly vortex the tube and then do a quick spin (less than 5000xg) to concentrate the liquid at the bottom.5. Store the suspended plasmid at -20°C. The DNA is stable for at least one year from date of shipping when stored at -20°C.
RefSeq:	NM_002771.3 , NP_002762.2
RefSeq Size:	823 bp
RefSeq ORF:	744 bp
Locus ID:	5646
UniProt ID:	P35030
Cytogenetics:	9p13.3
Protein Families:	Druggable Genome, Protease, Secreted Protein
Protein Pathways:	Neuroactive ligand-receptor interaction
MW:	26.7 kDa
Gene Summary:	This gene encodes a trypsinogen, which is a member of the trypsin family of serine proteases. This enzyme is expressed in the brain and pancreas and is resistant to common trypsin inhibitors. It is active on peptide linkages involving the carboxyl group of lysine or arginine. This gene is localized to the locus of T cell receptor beta variable orphans on chromosome 9. Four transcript variants encoding different isoforms have been described for this gene. [provided by RefSeq, Oct 2010]

Product images:



Circular map for RC210139