

Product datasheet for **RC210138**

GPRC5D (NM_018654) Human Tagged ORF Clone

Product data:

Product Type:	Expression Plasmids
Product Name:	GPRC5D (NM_018654) Human Tagged ORF Clone
Tag:	Myc-DDK
Symbol:	GPRC5D
Mammalian Cell Selection:	Neomycin
Vector:	pCMV6-Entry (PS100001)
E. coli Selection:	Kanamycin (25 ug/mL)
ORF Nucleotide Sequence:	>RC210138 representing NM_018654 Red=Cloning site Blue=ORF Green=Tags(s)

TTTTGTAATACGACTCACTATAGGGCGGCCGGAATTCGTCGACTGGATCCGGTACCGAGGAGATCTGCC
GCC**CGATCGCC**

ATGTACAAGGACTGCATCGAGTCCACTGGAGACTATTTTCTTCTCTGTGACGCCAGGGGCCATGGGGCA
TCATTCTGGAGTCCCTGGCCATACTTGGCATCGTGGTCACAATTCTGCTACTCTTAGCATTCTCTTCTCT
CATGCCAAAGATCCAAGACTGCAGCCAGTGGAAATGTCTCCCCACCCAGCTCCTCTTCTCCTGAGTGTC
CTGGGGCTCTTCGGACTCGCTTTTGCCTTCATCATCGAGCTCAATCAACAAACTGCCCCGTACGCTACT
TTCTCTTTGGGGTCTCTTTGCTCTGTCTTCTCATGCCTCTTAGCTCATGCCTCAATCTAGTGAAGCT
GGTTCGGGGTGTGTCTCCTTCTCCTGGACGACAATTCTGTGCATTGCTATTGGTTGCAGTCTGTTGCAA
ATCATTATTGCCACTGAGTATGTGACTCTCATCATGACCAGAGGTATGATGTTTGTGAATATGACACCTT
GCCAGTCAATGTGGACTTTGTTGTACTCCTGGTCTATGTCTCTTCTGATGGCCCTCACATTCTTCGT
CTCCAAAGCCACCTTCTGTGGCCCGTGTGAGAACTGGAAGCAGCATGGAAGGCTCATCTTATCACTGTG
CTCTTCTCCATCATCATCTGGTGGTGTGGATCTCCATGCTCCTGAGAGGCAACCCGAGTTCAGCGAC
AGCCCCAGTGGGACGACCCGGTCTGCTGATTGCTCTGGTACCAACGCATGGGTTTTCTGCTGCTGTA
CATCGTCCCTGAGCTCTGCATTCTACAGATCGTGTAGACAGGAGTGCCTTTACAAGGCAATGCCTGC
CCCGTCACAGCCTACCAACACAGCTTCCAAGTGGAGAACCAGGAGCTCTCCAGAGCCCGAGACAGTGATG
GAGCTGAGGAGGATGTAGCATTAACTTCATATGTTACTCCATTAGCCCGAGACTGTTGATCCACACA
AGAGTGTTTCATCCACAGGCTAAACTAAGCCCCAGCAAGATGCAGGAGGAGTA

ACGCGTACGCGGCCGCTCGAGCAGAACTCATCTCAGAAGAGGATCTGGCAGCAAATGATATCCTGGATT
ACAAGGATGACGACGATAAGGTTTAA



[View online »](#)

Protein Sequence: >RC210138 representing NM_018654
Red=Cloning site Green=Tags(s)

MYKDCIESTGDYFLLCDAEGPWGIILESILAILGIVVTILLLLAFLFLMRKIQDCSQWNLPTQLLFLLSV
 LGLFGLAFAFIIELNQQTAPVRYFLFGVLFALCFSCLLAHASNLVKLVRCVFSWTTILCIAIGCSLLQ
 IIIATEYVTLIMTRGMMFVNMTPCQLNDFVLLVYVFLMALTFVSKATFCGPCENWKQHGRLLIFITV
 LFSIIIWVWISMLLRGNPQFQRQPQWDDPVVCIALVTNAWVFLLLYIVPELCILYRSCRQECPLQGNAC
 PVTAYQHSFQVENQELSRARDSGAEEDVALTSYGTPIQPQTVDPTQECFIPQAKLSPQQDAGGV

TRTRPLEQKLISEEDLAANDILDYKDDDDKV

Chromatograms: https://cdn.origene.com/chromatograms/ja1568_a05.zip

Restriction Sites: SgfI-MluI

Cloning Scheme:



ACCN: NM_018654

ORF Size: 1035 bp

OTI Disclaimer: The molecular sequence of this clone aligns with the gene accession number as a point of reference only. However, individual transcript sequences of the same gene can differ through naturally occurring variations (e.g. polymorphisms), each with its own valid existence. This clone is substantially in agreement with the reference, but a complete review of all prevailing variants is recommended prior to use. [More info](#)

OTI Annotation: This clone was engineered to express the complete ORF with an expression tag. Expression varies depending on the nature of the gene.

Components: The ORF clone is ion-exchange column purified and shipped in a 2D barcoded Matrix tube containing 10ug of transfection-ready, dried plasmid DNA (reconstitute with 100 ul of water).

Reconstitution Method:

1. Centrifuge at 5,000xg for 5min.
2. Carefully open the tube and add 100ul of sterile water to dissolve the DNA.
3. Close the tube and incubate for 10 minutes at room temperature.
4. Briefly vortex the tube and then do a quick spin (less than 5000xg) to concentrate the liquid at the bottom.
5. Store the suspended plasmid at -20°C. The DNA is stable for at least one year from date of shipping when stored at -20°C.

RefSeq: [NM_018654.1](#), [NP_061124.1](#)

RefSeq Size: 1038 bp

RefSeq ORF: 1038 bp

Locus ID: 55507

UniProt ID: [Q9NZZ1](#)

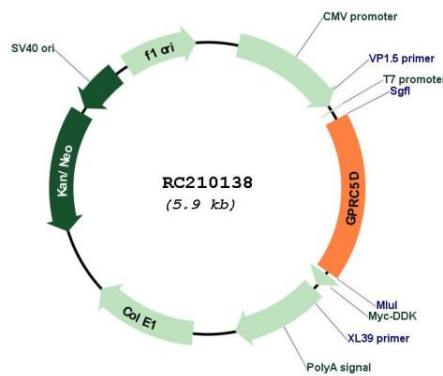
Cytogenetics: 12p13.1

Protein Families: Druggable Genome, GPCR, Transmembrane

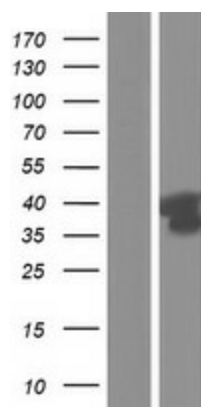
MW: 38.6 kDa

Gene Summary: The protein encoded by this gene is a member of the G protein-coupled receptor family; however, the specific function of this gene has not yet been determined. [provided by RefSeq, Jul 2008]

Product images:



Circular map for RC210138



Western blot validation of overexpression lysate (Cat# [LY412961]) using anti-DDK antibody (Cat# [TA50011-100]). Left: Cell lysates from untransfected HEK293T cells; Right: Cell lysates from HEK293T cells transfected with RC210138 using transfection reagent MegaTran 2.0 (Cat# [TT210002]).