

## Product datasheet for **RC210132**

### Aquaporin 10 (AQP10) (NM\_080429) Human Tagged ORF Clone

#### Product data:

Product Type:	Expression Plasmids
Product Name:	Aquaporin 10 (AQP10) (NM_080429) Human Tagged ORF Clone
Tag:	Myc-DDK
Symbol:	Aquaporin 10
Synonyms:	AQPA_HUMAN
Mammalian Cell Selection:	Neomycin
Vector:	pCMV6-Entry (PS100001)
E. coli Selection:	Kanamycin (25 ug/mL)
ORF Nucleotide Sequence:	>RC210132 ORF sequence Red=Cloning site Blue=ORF Green=Tags(s)

TTTTGTAATACGACTCACTATAGGGCGGCCGGAATTCGTCGACTGGATCCGGTACCGAGGAGATCTGCC  
GCC**CGATCGCC**

ATGGTCTTCACTCAGGCCCGGCTGAAATCATGGGCCACCTCCGGATACGCAGCCTCTGGCCCGGCAGT  
GCCTGGCAGAGTTTCTGGGTGTGTTTGTACTCATGCTCCTCACCAAGGAGCTGTGGCCAGGCTGTCAC  
CAGTGGAGAAACCAAGGCAACTTCTTCCCATGTTTCTGGCTGGCTCTCTGGCCGTTACGATAGCCATC  
TACGTGGGTGGTAACGTCTCAGGGGCCACCTGAATCCAGCCTTCTCCCTGGCCATGTGCATCGTTGGAC  
GCCTCCCTGGGTCAAGCTCCCCATTTACATCTTGGTGCAGTTGCTGTCTGCTTTCTGTGCTTCGGGAGC  
CACCTATGTTCTTACCATGATGCCCTACAGAACTATACAGGTGGGAACCTGACAGTGACTGGCCCCAAG  
GAGACAGCCTCCATTTTTGCCACCTATCCTGCCCCCTATCTGTCCCTGAACAATGGCTTCTGGATCAGG  
TTCTGGGCACCGGATGCTGATTGTGGGCTCTTGGCCATCCTGGACAGACGGAACAAGGGAGTCCCTGC  
GGGTCTGGAGCCTGTGGTGGTGGGATGCTGATCCTGGCCCTCGGGTTATCCATGGGTGCCAACTGCGGG  
ATTCCACTCAACCCTGCCCGGACCTGGGCCACGTCTTTCACCTACGTGGCTGGCTGGGGTCTGAAG  
TCTTCAGTGCTGGTAATGGCTGGTGGTGGTGCCTGTGGTGGCCCTCTGGTGGGGGCCACCGTTGGCAC  
AGCCACTTACCAGCTGTTGGTGGCTCTGCACCACCTGAGGGCCAGAGCCAGCTCAGGATCTGGTGTCT  
GCTCAACACAAAGCCTCAGAGTTGAAACTCCTGCCTCAGCTCAGATGCTGGAGTGAAGCTA

**ACGCGT**ACGCGGCCGCTCGAGCAGAAACTCATCTCAGAAGAGGATCTGGCAGCAAATGATATCCTGGATT  
ACAAGGATGACGACGATAAGGTTTAA



[View online »](#)

**Protein Sequence:** >RC210132 protein sequence  
Red=Cloning site Green=Tags(s)

MVFTQAPAEIMGHLRIRSLARQCLAEFLGVFVLMMLLTQGAQAQAVTSGETKGNFFTMFLAGSLAVTIAI  
 YVGGNVSGAHLNPAFSLAMCIVGRPLPWVKLPYIILVQLLSAFACASGATYVLYHDALQNYTGGNLTVTGP  
 ETASIFATYPAPYLSLNGFLDQVLGTGMLIVGLLAILDRRNKGVPALEPVVVGMLILALGLSMGANGC  
 IPLNPARDLGPRLFTYVAGWGPVFSAGNGWWWVVPVAPLVGATVGTATYQLLVALHHPEGPEPAQDLVS  
 AQHKASELETPASAQMLECKL

TRTRPLEQKLISEEDLAANDILDYKDDDDKV

**Chromatograms:** [https://cdn.origene.com/chromatograms/mk6589\\_e10.zip](https://cdn.origene.com/chromatograms/mk6589_e10.zip)

**Restriction Sites:** SgfI-MluI

**Cloning Scheme:**



**ACCN:** NM\_080429

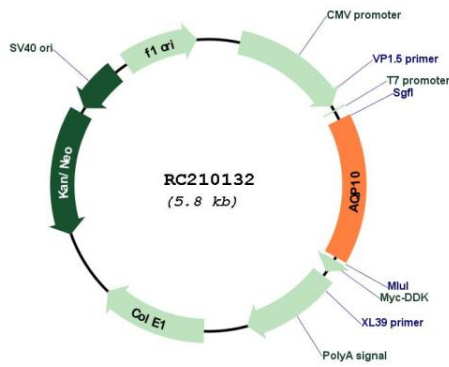
**ORF Size:** 903 bp

**OTI Disclaimer:** Due to the inherent nature of this plasmid, standard methods to replicate additional amounts of DNA in E. coli are highly likely to result in mutations and/or rearrangements. Therefore, OriGene does not guarantee the capability to replicate this plasmid DNA. Additional amounts of DNA can be purchased from OriGene with batch-specific, full-sequence verification at a reduced cost. Please contact our customer care team at [custsupport@origene.com](mailto:custsupport@origene.com) or by calling 301.340.3188 option 3 for pricing and delivery.

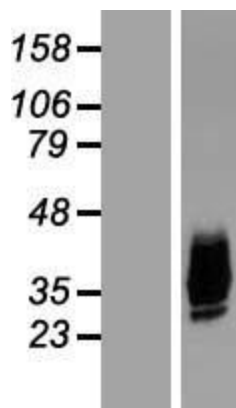
The molecular sequence of this clone aligns with the gene accession number as a point of reference only. However, individual transcript sequences of the same gene can differ through naturally occurring variations (e.g. polymorphisms), each with its own valid existence. This clone is substantially in agreement with the reference, but a complete review of all prevailing variants is recommended prior to use. [More info](#)

<b>OTI Annotation:</b>	This clone was engineered to express the complete ORF with an expression tag. Expression varies depending on the nature of the gene.
<b>Components:</b>	The ORF clone is ion-exchange column purified and shipped in a 2D barcoded Matrix tube containing 10ug of transfection-ready, dried plasmid DNA (reconstitute with 100 ul of water).
<b>Reconstitution Method:</b>	<ol style="list-style-type: none"><li>1. Centrifuge at 5,000xg for 5min.</li><li>2. Carefully open the tube and add 100ul of sterile water to dissolve the DNA.</li><li>3. Close the tube and incubate for 10 minutes at room temperature.</li><li>4. Briefly vortex the tube and then do a quick spin (less than 5000xg) to concentrate the liquid at the bottom.</li><li>5. Store the suspended plasmid at -20°C. The DNA is stable for at least one year from date of shipping when stored at -20°C.</li></ol>
<b>RefSeq:</b>	<u><a href="#">NM_080429.2</a></u> , <u><a href="#">NP_536354.2</a></u>
<b>RefSeq Size:</b>	1794 bp
<b>RefSeq ORF:</b>	906 bp
<b>Locus ID:</b>	89872
<b>UniProt ID:</b>	<u><a href="#">Q96PS8</a></u>
<b>Cytogenetics:</b>	1q21.3
<b>Protein Families:</b>	Transmembrane
<b>MW:</b>	31.8 kDa
<b>Gene Summary:</b>	This gene encodes a member of the aquaglyceroporin family of integral membrane proteins. Members of this family function as water-permeable channels in the epithelia of organs that absorb and excrete water. This protein was shown to function as a water-selective channel, and could also permeate neutral solutes such as glycerol and urea. [provided by RefSeq, Jul 2008]

Product images:



Circular map for RC210132



Western blot validation of overexpression lysate (Cat# [LY409172]) using anti-DDK antibody (Cat# [TA50011-100]). Left: Cell lysates from untransfected HEK293T cells; Right: Cell lysates from HEK293T cells transfected with RC210132 using transfection reagent MegaTran 2.0 (Cat# [TT210002]).